

KENNER SIMMENTAL RANCH

19th Annual Production Sale // February 14, 2015
1:00 PM // At the Ranch - Leeds, ND

*Selling 118 Bulls & 66 Bred Heifers
Black, Red, Purebred & SimAngus*

WWW.KENNERSIMMENTAL.COM

KENNER SIMMENTAL RANCH

Welcome...



Roger, Jeanette & Erika Kenner
5606 57th St NE ▪ Leeds, North Dakota 58346
Phone 701-466-2800 ▪ Erika 406-581-1188 ▪ erika.kenner@gmail.com
Herdsman: Bryan Leapaldt ▪ 701-466-2553 ▪ 701-739-8764 Cell

There have been many changes at Kenner Simmental in the past couple years! We were able to move in to the new Bull & Heifer Development

Center this Fall, but the dirt work started the Fall of 2012.

We had outgrown the facility we were using, so we either needed to sell cows or build new, as we didn't have enough room to expand the existing location. We are committed to this industry and plan to be around for the long-haul, so we built new! Starting from scratch allowed us to carefully think things through. In the end, we realized there would be an advantage to moving our sale to the new location. We won't have to transport the animals to and from the sale barn & risk hurting anything and we eliminate the chance of animal health contamination. We understand it is farther to come for most of our customers, but we will still deliver the bulls as in the past and we still stand behind every purchase, in person or online.

We are very excited about our 2015 sale offering! Our goal is to always make them better – better for our customers and our customer's customers.

Video Auction

Our sale format will be different this year as we are selling the bulls by video in the sale barn. The bulls will still be penned separately as at past sales right outside the door and will stay in those pens through the sale. It will be easy to take another look at any animal during the sale if needed.

The sale will be broadcast on DVAuction this year. If you can't attend, please log-on to watch and bid online! Remember to sign up ahead of sale day to make sure you do not have problems.

After the Sale

All the heifers must go home the day of the sale or have transportation arrangements made since many will be close to calving. We will keep the bulls free of charge until April 1 when we start deliveries. The bulls will be semen tested the end of March and as soon as a load is ready to go to a certain area, we will call you. For all animals staying in our care, we do recommend insurance for both our protection and yours. There will be forms available on sale day or you can use a company of your choice.

Join us for Prime Rib!

In celebration of our first year on the farm and Valentine's Day, please stay after the sale and join us for prime rib! Catered by KJ's Bar in Leeds, ND and they are known for their excellent prime rib!

Sponsored by Kenner Simmental & Gill Red Angus

Join us for "Simmental & Red Angus Commercial Ranching Seminar"

Friday, January 30, 2015 // Free meal starting at 6:00 pm CST
Pioneer Seeds Building, 2120 40th Ave SE, Mandan, ND (3 blocks south of Kist)

Focused on Marketing your next calf crop with featured speakers:

Barrett Carlisle, Denton, TX – Commercial Marketing Specialist Red Angus Assoc of America // Luke Keller, Mandan, ND – Director of Seedstock & Industry Operations American Simmental Assoc // Tim Larson, Sydney, MT – Trading manager and partner for Prewitt and Company // Zac Hall, Bismarck, ND – Territory manager for GeneSeek

Please RSVP to Erika Kenner at 406-581-1188 or erika.kenner@gmail.com

HERD HEALTH

All the bulls in the sale have had calfhooed vaccinations of Inforce 3, 7-way Somnus, One Shot, and Vira Shield 6. Pre-weaning shots were 7-way Somnus, One Shot, and Vira Shield 6. At weaning they were boosted with Bovishield Gold and Somnus and treated with Dectomax injectable. They were poured with generic ivermectin November 1. They were poured with Saber Ultra on January 15.

The bred heifers were vaccinated and boosted prior to breeding with Vira Shield 6 VL5 HB. They were vaccinated with Scour Bos 9 and Type A Clostridia and were boosted with Scour Bos 4, Type A Clostridia, and poured with Dectomax. The heifers were poured with Saber Ultra on January 15.

The bulls were fed a TMR ration formulated by Darryl Ruppert of Purina Feeds. It's a 52 mega-cal ration. Our goal is for moderate gains so we do not burn out the bulls. We strive for soundness and longevity in our bulls. Our ADG for the 2015 sale bulls was 3.68 on a 105-day test.

BVD AND JOHNE'S STATUS

All animals in the herd were tested for BVD and tested negative. We also test for Johne's each year during preg check and have completed 4 years of testing. We remain at a Level 3 status.



For more information, log on to www.kennersimmental.com

The new sale facility.

KENNER SIMMENTAL RANCH 19TH ANNUAL PRODUCTION SALE

February 14, 2015 // 1:00 PM // At the Ranch - Leeds, ND



Sale Day Phones...

Roger Kenner: **701.351.3818** | Bryan Leapoldt: **701.739.8764** | Erika Kenner: **406.581.1188**

LOCATION:

Kenner Simmental Ranch Sale Facility
5850 57th St NE Leeds, ND 58346

- 3 miles south of Leeds and 3 miles east on 57th St NE
- 3 miles west of Hwy 281 on 57th St NE

SALE SCHEDULE:

Prior to the Sale

Anytime prior to the sale – Cattle available for viewing

Saturday, February 14th

10:00 am Cattle penned & available for viewing
11:00 am Lunch
1:00 pm Sale Begins

Following the sale, Prime rib supper, Kenner Sale Facility

LODGING:

Devils Lake, ND

The Fireside Inn (block cutoff: Feb. 1) 701-662-6760
Holiday Inn Express (block cutoff: Jan 29) 701-665-3200

Rugby, ND

Cobblestone Inn 701-881-3000
Northern Lights Motel 800-997-5148

SALE REPRESENTATIVES:

Jeff Thomas, the Prairie Star 406-581-8859
Steve Koester, Special Assignment 701-400-1611
Russ Danielson, ASA Field Staff 701-261-2742
Todd Finke, Special Assignment 701-240-7711
Scott Ressler, ND Stockman's Association 701-391-7310
Vern Frey, Special Assignment 701-721-0344

AUCTIONEER:

Roger Jacobs 406-373-6124

SALE CONSULTANTS:

Archie Fleming, Jacksonville, TX 903-586-8505
Brian Bouchard, Crossfield, AB, Canada 403-946-4999 • 403-813-7999
Bouchard Livestock International

ANNOUNCEMENTS:

Announcements made sale day, and from the auction block during the sale, take precedence over printed material associated with this sale. Anyone attending this sale attends at their own risk. Breeders or any of the sale staff will not be held responsible for any personal injury while attending this sale.

AIRPORT:

Devils Lake Regional Airport (DVL) is served by United to Denver and has excellent facilities for light aircraft.
Leeds (D31), Maddock (6D3) and Rugby (KRUG) have airports for light aircraft. Check runway conditions before landing

EPDS:

EPDs in this catalog are the Spring 2015 EPDs for all animals.

PERFORMANCE DATA:

Complete ultrasound data will be available before the sale by logging on to www.kennersimmental.com. Carcass EPDs in the catalog are already updated with the carcass ultrasound information. Data will also be available on sale day.

VIDEOS:

Videos of the bulls will be available on our website at the end of January. Log on to www.kennersimmental.com.

SALE FORMAT:

The cattle will sell by video on sale day. All the bulls and heifers will be penned next to the sale barn by 10 am on sale day and will stay in those pens throughout the sale.

TRUCKING:

We will try to deliver the bulls to the buyer's farm, or we will assist buyers in coordinating loads and make the most economical trucking arrangements possible. All the bred heifers must be picked up on sale day or have trucking arrangements made soon after since they will be close to calving. For assistance with trucking arrangements, contact Erika.

INSURANCE:

We can keep the bulls at home for no charge until April 1, but we recommend purchasing insurance.
For more information contact: Erika Kenner, 406-581-1188

TERMS & CONDITIONS:

- We guarantee all bulls to be breeders and we reserve the right to test any bull in question as a non-breeder for at least 180 days before making an adjustment. And, if the bull is declared a sound breeder by a competent veterinarian, he will be returned to the buyer, at buyer's expense. In case an adjustment is required, it will be made with a replacement of equal value to animal in question, credit on purchase of another animal, or return of purchase price.
- Each animal becomes property and therefore is also the risk of the purchaser after it is sold. We guarantee the cattle to be healthy sale day.
- For those who cannot attend the sale, we will honor a telephone order and guarantee your phone purchase to meet your request when inspected personally by you.
- Certificates of registry will be supplied by the seller.
- All cattle sell under terms and conditions of the American Simmental Association and will be available in the office on sale day by request.
- We reserve the right to collect 100 units of semen on any bull in the sale for in-herd use only. The collection would be at our expense and buyer's convenience. Each bull will sell to the buyer with 100% ownership opportunity.

Can't make it? Watch and bid online through DV Auction. Log on to www.dvauction.com and register for the sale. *You must be approved prior to the sale, so please register early.*

Catalog by 

Emily Brinkman | 419-967-0141 | www.generation6.co

KENNER SIMMENTAL RANCH

Data Explanations

WHY USE EPDS?

We have included all the data we can for each animal in this catalog, but we strongly recommend using the EPDs. EPDs allow a buyer to compare the animals across the breed. If you look at the actual data of an animal, it only tells you how they compare in that particular herd. By using the EPDs, you can compare them across herds and within herds more accurately.

Make sure to notice the EPD breed averages printed on page 45 and use to evaluate each lot.

CALVING EASE EPD

Please understand the CE EPD is actually heifer calving ease. This number tells you how those bulls will calve on heifers - % unassisted compared to the other bulls on heifers. For example: If Bull A has a CE EPD of 10 and Bull B has a CE EPD of 5, Bull A will have 5% more unassisted births than Bull B when used on heifers. If you are going to use the bull for cows, you do not need to have that number as high.

GENOMIC EPDS

We have DNA tested many bulls for the 80K



test and those were incorporated in to their EPDs. We usually test the top end bulls, plus many ET calves. The ET calves all have the same EPDs by pedigree estimate until they are 80K tested.

The genomic EPDs also have a higher accuracy than the rest of the non-parent calves.

DILUTION GENE (DL)

There is a DNA test now for the dilution gene. We have tested all the red bulls or their dams and granddams and have them all identified in this catalog. The results will show as DLF (Dilution Free) or DLC (Dilution Carrier).

All of the bulls in the sale offering are DLF and you will see that listed in the data of each lot. Many of the heifers are identified and we are expecting to receive results on a few more before sale day.

DLF means they do not carry the dilution gene so when mated to a black animal, you will not get a grey calf. DLC means they do carry the dilution gene and when mated to a black animal, you may see a grey calf.

ADG EPD

We have added an EPD to our EPD list this year. This EPD is not printed on the ASA pedigree, but it is calculated at ASA and is used in some of the EPD calculations. It is an EPD that is beneficial to cattle feeders and is used frequently by many feedyards.

We also list the ADG of each calf from their 105-day test, however the ADG EPD factors in all the data that goes into calculating the WW and YW EPDs and the gains making it more accurate. The ASA does have a percentile table because they do calculate it in house. You will notice that most of our sale offering for each category is in the top 30% of the breed for ADG EPD.

The formula is easy and anyone can calculate it at home.

$$(YW EPD - WW EPD) / 160 = ADG EPD$$

The 160 is the difference in days between 205 and 365-day weights.

ADG EPD Percentile Table		
Percentile	Purebred	Hybrid
1	0.285	0.334
2	0.272	0.319
3	0.265	0.309
4	0.259	0.301
5	0.254	0.295
10	0.238	0.274
15	0.227	0.260
20	0.218	0.249
25	0.210	0.239
30	0.204	0.231
35	0.197	0.223
40	0.191	0.215
45	0.186	0.208
50	0.180	0.201
55	0.174	0.193
60	0.169	0.186
65	0.163	0.178
70	0.156	0.170
75	0.150	0.162
80	0.142	0.152
85	0.133	0.141
90	0.122	0.127
95	0.106	0.106
Average	0.180	0.201

Can't make the sale? Watch & bid online for FREE at www.dvauction.com !

Buying online is as easy as 1, 2, 3...

1. Create an account at www.dvauction.com under the "register" tab
2. Apply for bidding approval by clicking on the "details" tab at least 24 hours prior to the auction-a DV representative will notify you once you have been approved
3. Tune in for the sale and make your purchases!

After the sale, contact the sale manager or owner to arrange transportation and payment. **High speed internet** is required for successful bidding-be sure to check the lag-time monitor in the top left corner to ensure real-time broadcasts.

Proxy Bidding-if you can't make time to watch the sale, register a proxy bid and let our system represent your bid while you're away. Look for the "proxy bid" tab on the auction listing, and fill in your maximum bids. We'll handle the rest!

Having troubles?
During the auction, you can type a message to the operator at any time for assistance. Our full-time support team can always be reached at (402) 474-5557.



We had the privilege of riding the pastures of Gateway Simmental, Lewistown, MT, this summer on our annual trailriding vacation in Montana. Here are two past ASA Chairman, Jim Butcher and Roger.

REFERENCE SIRES

Purebred Simmental Reference Sires

Name	Sire x MGS	Breeds	CE	BW	WW	YW	MCE	MM	MWW	YG	MB	Doc	API	TI
3D Red Power 150Z	LFEBISS Black Advance x TNT Dynamite Black	PB SM	1	7.0	97	147	6.5	15	63	-0.14	-0.15	11.4	90	72
BBS Meatball Z19	TJ Easy Money x Wheatland Bull 680S	PB SM (7/8)	5	4.0	75	122	7.6	22	60	-0.22	0.21	12.1	121	73
Ellingson Legacy M229 "Olie"	Nichols Legacy x LRS Preferred Stock	PB SM	18	-0.5	59	91	12.3	24	53	-0.61	0.24	12.9	147	73
Harvie JDFWallbanger 111X	SHS Enticer x Remington On Target	PB SM	3	3.8	84	142	8.6	14	55	-0.20	-0.18	9.5	102	68
Hooks Shear Force 38K	Nichols Legacy x Circle S Leachman 600U	PB SM	22	-3.6	55	73	12.8	34	61	-0.57	0.55	13.7	184	82
Hooks/KS Sequoia 35S	Hooks Shear Force x PPSR Nophalt	PB SM (7/8)	13	2.5	60	84	11.8	26	56	-0.37	0.44	12.4	140	73
HTP SVF In Dew Time	CNS Dream On x GW Lucky Dice	PB SM	15	0.1	60	77	12.1	9	39	-0.22	0.45	13.2	142	74
KS Black Diamond W992	Wheatland Bull 680S x LRS Preferred Stock	PB SM	1	5.2	70	118	3.1	29	64	-0.45	-0.26	11.7	91	59
KS Embassy Z7512	HTP SVF In Dew Time x LRS Preferred Stock	PB SM	8	2.2	69	99	11.2	17	51	-0.30	0.15	13.6	120	70
KS Magic Mike Z903	Ellingson Legacy M229 x Hooks Shear Force	PB SM (7/8)	14	1.3	71	107	13.1	25	61	-0.35	0.29	13.6	136	77
LFE BS Lewis 322U "Stubby"	R Plus Blackedge x LRS Bombshell 508N	PB SM	11	4.3	66	90	4.0	18	51	-0.20	-0.27	9.0	95	56
LFE Red Ridge 809W	LFE MR Lewis 462P x TNT Dynamite Black	PB SM	0	6.0	78	115	6.3	23	62	-0.27	-0.01	14.8	93	66
LFE Rich Blend 385Y	LFE Black Lakota x LFE Red Hemi	PB SM	6	3.5	42	66	12.4	22	42	-0.16	0.08	3.6	101	51
MJ Top Gear	THSF Freedom x Nichols Legacy	PB SM	7	1.1	69	106	14.2	18	53	-0.39	-0.09	15.8	114	66
NLC Break Free 72W	NLC Stetson 36S x NLC Gothic	PB SM	17	0.5	75	114	11.2	15	53	-0.35	0.11	6.0	143	73
SRF Shear Force 370W "Todd"	Hooks Shear Force x LCHMAN Bodybuilder	PB SM	8	2.6	45	62	14.9	38	60	-0.40	0.21	8.7	116	60
SVS Blk Currency 231Y	TNT Tanker x TNT Dynamite Black	PB SM	5	3.9	68	103	14.2	22	56	-0.36	-0.22	11.1	88	58
Trax Black Gold Y57	KS Black Diamond x CCR Snake Eyes	PB SM	0	7.9	65	105	4.6	30	63	-0.29	0.11	6.7	102	61
WS All In W111	HSF High Roller x Hooks Shear Force	PB SM	17	0.2	85	118	14.7	40	83	-0.30	0.13	11.5	151	84
WS Beef King W107	WS Beef Maker x CNS Dream On	PB SM	14	1.1	90	119	17.4	12	56	-0.45	0.42	8.6	156	91
Simmental Breed average:			8.7	1.9	63.2	92.0	9.4	22.1	53.6	-0.31	0.14	9.6	120.6	67.4

Red & Black SimAngus Reference Sires

Name	Sire x MGS	Breeds	CE	BW	WW	YW	MCE	MM	MWW	YG	MB	Doc	API	TI
BAS Heavy Duty	TNT Dual Focus x TNT Gunner	3/4 SM 1/4 AN	11	2.8	63	103	8.0	19	50	-0.18	0.46	5.1	130	72
BCLR ShamWow W611	WS Beef Maker x BFCK Cherokee Cnyn	3/4 SM 1/4 AR	14	0.1	88	137	4.3	25	68	-0.15	0.58	13.7	153	94
KR Sharp Shooter Z33	TJ Sharper Image x CNS Dream On	3/4 SM 1/4 AN	9	1.3	69	110	8.4	27	62	-0.12	0.28	13.6	121	72
KS Final Answer X701	SAV Final Answer x Wheatland Bull 131L	1/2 SM 1/2 AN	15	-1.1	64	97	11.5	19	51	-0.13	0.22	7.6	136	69
KS Tailored Y304	HF Kodiak 5R x LRS Preferred Stock	1/2 SM 1/2 AN	14	1.0	53	86	11.4	21	48	-0.31	0.40	13.8	135	66
KS Vegas X130	SAV Final Answer x Nichols Legacy	1/2 SM 1/2 AN	8	-1.0	61	89	4.0	26	57	-0.22	0.33	9.9	112	70
TJ Sharper Image 809U	Dikemans Sure Bet x LT 598 Bando 9074	1/2 SM 1/2 AN	7	2.3	90	143	11.2	29	74	0.06	0.39	17.9	123	84
Hybrid Breed Average:			10.4	0.6	60.7	92.9	8.0	22.8	53.0	-0.20	0.35	10.3	121.7	68.7

Purebred Black Angus Reference Sires (American Simmental EPDs)

Name	Sire x MGS	Breeds	CE	BW	WW	YW	MCE	MM	MWW	YG	MB	Doc	API	TI
Benfield Substance 8506	H A Image Maker x Jauer Java 8136	PB AN	15	-0.8	76	124	5.5	28	66	0.19	0.42	12.5	111	71
Ellingson Durango 2156	Sitz Dimension x LT Bandwagon	PB AN	16	-3.2	60	114	9.9	24	55	0.01	0.60	10.5	134	70
Ellingson Identity 9104	TC Aberdeen x Wulffs EXT 6106	PB AN	25	-4.6	62	109	15.3	34	65	-0.18	0.92	13.3	183	83
S A V 004 Density 4336	SAV 8180 Traveler 004 x Leachman Right Time	PB AN	7	1.9	66	111	0.9	18	51	0.04	0.87	6.4	102	72
S A V Final Answer 0035	Sitz Traveler 8180 x Bon View Bando 598	PB AN	22	-4.5	75	119	13.2	22	60	0.05	0.72	12.0	165	83
TC Aberdeen 759	CRA Bextor 872 5205 608 x Bon View New Design	PB AN	16	-2.8	64	114	10.7	33	65	-0.27	0.57	16.3	133	73

Purebred Red Angus Reference Sires (American Simmental EPDs)

Name	Sire x MGS	Breeds	CE	BW	WW	YW	MCE	MM	MWW	YG	MB	Doc	API	TI
Beckton Epic R397 K	Beckton Epic x Beckton Julian GG B571	PB AR	6	0.3	77	132	-2.5	21	60	0.19	0.47	13.9	78	70
Beckton Hustler S426 C2	Beckton Hustler C2 L079 x Beckton Colt G552	PB AR	20	-0.4	95	155	5.6	-1	46	0.24	0.38	20.4	130	79
HXC Conquest 4405P	Beckton Julian GG x BFCK Cherokee Cnyn	PB AR	20	-6.0	61	98	6.3	27	57	0.09	0.62	12.5	144	74

WE EXTEND A HUGE THANK YOU TO OUR CREW ON THE FARM.
WE FEEL WE HAVE THE BEST TEAM AROUND!

KENNER SIMMENTAL RANCH

Black Purebred Simmental Bulls

Sons of Demmi & Rebecca



KS Demmi M978 - Dam of Lots 1-3

2 KS IN DEW TIME B3021

ASA# 2850887

Homozygous Polled Homozygous Black Purebred Simmental Bull
Tattoo: B3021 • Birthdate: 3/18/14 • ET
Adj. BW: 98 lbs • Adj. WW: 718 lbs • Adj. YW: 1311 lbs • ADG: 3.7 • WDA: 3.7 • SC: 38.0
Owned by: Roger Kenner

SIRE: **HTP SVF IN DEW TIME**
 _____ CNS DREAM ON L186
 _____ HTP SVF HONEYDEW
 _____ ELLINGSON BLACKPERFECTOR
 DAM: **KS DEMMI M978**
 _____ KS SHANIA H871

EPDs		CW 26.8
CE 10	YG -0.10	
BW 2.4	MAR 0.44	
WW 61	BF 0.01	
YW 90	REA 0.61	
MCE 10	STAY 14.9	
MM 17	DDC 9.4	
MW 48	API 126	
ADG 0.182	TI 71	

- Full brother to lot 1.
- Other ET Demmi lots in this sale are: 73 & 74, lot 99 and you will see her influence in many other pedigrees.



BCLR Miss Rebecca R505 - Dam of Lots 4-5



LFE BS Lewis 322U (Stubby) - Sire of Lots 3-5

1 KS IN DEW TIME B3006

ASA# 2850864

Homozygous Polled Heterozygous Black Purebred Simmental Bull
Tattoo: B3006 • Birthdate: 3/25/14 • ET
Adj. BW: 101 lbs • Adj. WW: 721 lbs • Adj. YW: 1305 lbs • ADG: 3.7 • WDA: 3.7 • SC: 38.3
Owned by: Roger Kenner

SIRE: **HTP SVF IN DEW TIME**
 _____ CNS DREAM ON L186
 _____ HTP SVF HONEYDEW
 _____ ELLINGSON BLACKPERFECTOR
 DAM: **KS DEMMI M978**
 _____ KS SHANIA H871

EPDs		CW 26.8
CE 10	YG -0.16	
BW 2.4	MAR 0.53	
WW 61	BF -0.01	
YW 90	REA 0.62	
MCE 10	STAY 14.9	
MM 17	DDC 9.4	
MW 48	API 131	
ADG 0.182	TI 74	

- Full brother to lot 2.
- Other ET Demmi lots in this sale are: 73 & 74, lot 99 and you will see her influence in many other pedigrees.

3 KS MR STUBBY B851

ASA# 2850744

Homozygous Polled Heterozygous Black Purebred Simmental Bull
Tattoo: B851 • Birthdate: 3/15/14 • ET
Adj. BW: 95 lbs • Adj. WW: 668 lbs • Adj. YW: 1154 lbs • ADG: 3.1 • WDA: 3.3 • SC: 40.3
Owned by: Erika Kenner

SIRE: **LFE BS LEWIS 322U (STUBBY)**
 _____ R PLUS BLACKEDGE
 _____ LFE BS MS ARNOLD 1355
 _____ ELLINGSON BLACKPERFECTOR
 DAM: **KS DEMMI M978**
 _____ KS SHANIA H871

EPDs		CW 33.9
CE 8	YG -0.29	
BW 4.5	MAR -0.07	
WW 64	BF -0.08	
YW 96	REA 0.59	
MCE 6	STAY 15.6	
MM 22	DDC 7.3	
MW 54	API 95	
ADG 0.204	TI 59	

- Other ET Demmi lots in this sale are: 73 & 74, lot 99 and you will see her influence in many other pedigrees.
- Full ET sib is red bull, lot 99.

4 KS MR STUBBY B6848

ASA# 2850901

Homozygous Polled Heterozygous Black Purebred Simmental Bull
Tattoo: B6848 • Birthdate: 3/18/14 • ET
Adj. BW: 96 lbs • Adj. WW: 690 lbs • Adj. YW: 1245 lbs • ADG: 3.5 • WDA: 3.5 • SC: 39.5
Owned by: Roger Kenner

SIRE: **LFE BS LEWIS 322U (STUBBY)**
 _____ R PLUS BLACKEDGE
 _____ LFE BS MS ARNOLD 1355
 _____ TNT TONNER N374
 DAM: **BCLR MISS REBECCA R505**
 _____ SHOESTRING KMICKS K320

EPDs		CW 29.9
CE 7	YG -0.30	
BW 4.2	MAR -0.09	
WW 67	BF -0.06	
YW 91	REA 0.70	
MCE 8	STAY 16.5	
MM 21	DDC 7.5	
MW 55	API 95	
ADG 0.151	TI 60	

- Full brother to lot 5. ET siblings are lots 68, 98 & 111.

5 KS MR STUBBY B741

ASA# 2850688

Homozygous Polled Heterozygous Black Purebred Simmental Bull
Tattoo: B741 • Birthdate: 3/27/14 • ET
Adj. BW: 127 lbs • Adj. WW: 788 lbs • Adj. YW: 1380 lbs • ADG: 3.7 • WDA: 4.0 • SC: 39.4
Owned by: Erika Kenner

SIRE: **LFE BS LEWIS 322U (STUBBY)**
 _____ R PLUS BLACKEDGE
 _____ LFE BS MS ARNOLD 1355
 _____ TNT TONNER N374
 DAM: **BCLR MISS REBECCA R505**
 _____ SHOESTRING KMICKS K320

EPDs		CW 32.8
CE 7	YG -0.25	
BW 4.3	MAR -0.16	
WW 69	BF -0.02	
YW 96	REA 0.95	
MCE 8	STAY 13.8	
MM 21	DDC 7.5	
MW 56	API 86	
ADG 0.168	TI 59	

- Full brother to lot 4. ET siblings are lots 68, 98 & 111.



KENNER SIMMENTAL RANCH

Black Purebred Simmental Bulls

BLACK PUREBRED BULLS

Sons of Harvie JDF WallBanger 111X



Lot 6



Lot 7

6 KS HEAVY HITTER B719

ASA# 2850677

Homozygous Polled Heterozygous Black Purebred Simmental Bull
Tattoo: B719 • Birthdate: 2/22/14
Adj. BW: 100 lbs • Adj. WW: 844 lbs • Adj. YW: 1596 lbs • ADG: 4.7 • WDA: 4.4 • SC: 38.5
Owned by: Erika Kenner

SIRE: SHS ENTICER P1B
HARVIE JDFWALLBANGER111X
JDF PEPSI 61U
TNT GUNNER N208
DAM: **KS URI U347**
KS SHANIA H871

EPDs		CW 56.9
CE	6	YG -0.15
BW	4.0	MAR -0.05
WW	84	BF -0.04
YW	136	REA 0.76
MCE	10	STAY 18.8
MM	22	DDC 8.4
MW	64	API 110
ADG	0.326	TI 72

- Ranks #9 for Adj. WW, #1 for Adj. YW, #1 for ADG and #1 for WDA among the Purebred bulls in the sale. Ranks in the top 1% among Purebreds for ADG EPD.
- Maternal granddam is dam of KS Demmi – she is an influential matriarch in our herd and this sale.



Lot 8

Harvie JDF Wallbanger

Heterozygous Black **Homozygous Polled**

We used Wallbanger in our AI program last year for the first time. He is most known for being the sire of the \$190,000 bull in Canada, SVS Captain Morgan. The sons and daughters we have in the pens are extremely good. They performed well all summer and post weaning and their dispositions have been great. We added him as a performance for our cows. We look forward to seeing the milking ability of the daughters, but so far we are very pleased and used him again. We tried to get red calves by him, but ended up with mainly blacks. There are 2 red bulls in this offering by him – Lots 95 & 96.

7 KS QUARTERBACK B733

ASA# 2850683

Homozygous Polled Heterozygous Black Purebred Simmental Bull
Tattoo: B733 • Birthdate: 2/18/14
Adj. BW: 95 lbs • Adj. WW: 782 lbs • Adj. YW: 1504 lbs • ADG: 4.6 • WDA: 4.1 • SC: 43.8
Owned by: Roger Kenner

SIRE: SHS ENTICER P1B
HARVIE JDFWALLBANGER111X
JDF PEPSI 61U
WHEATLAND RED TEDDY 457P
DAM: **KS URSELINE U479**
KS ROSEANNE R114

EPDs		CW 55.0
CE	5	YG -0.28
BW	2.4	MAR -0.07
WW	82	BF -0.07
YW	137	REA 0.87
MCE	12	STAY 20.5
MM	16	DDC 9.1
MW	57	API 114
ADG	0.344	TI 72

- Ranks #3 for Adj. YW, #2 for ADG and #8 for WDA among the Purebred bulls in the sale. Ranks in the top 1% among Purebreds for ADG EPD.
- Same cow family as lot 96.

8 KS LINEBACKER B848

ASA# 2850742

Homozygous Polled Heterozygous Black Purebred Simmental Bull
Tattoo: B848 • Birthdate: 2/23/14 • Twin - Opp
Adj. BW: 80 lbs • Adj. WW: 754 lbs • Adj. YW: 1370 lbs • ADG: 3.9 • WDA: 3.8 • SC: 42.6
Owned by: Roger Kenner

SIRE: SHS ENTICER P1B
HARVIE JDFWALLBANGER111X
JDF PEPSI 61U
HOOKS/KS SEQUOIA 355
DAM: **KS WENDELIN W654**
KS TARA T349

EPDs		CW 37.7
CE	9	YG -0.23
BW	1.9	MAR 0.17
WW	70	BF -0.04
YW	109	REA 0.73
MCE	12	STAY 23.6
MM	21	DDC 10.9
MW	56	API 133
ADG	0.246	TI 72

- Same cow family as lots 87, 116 & 171.

9 KS MR WALLBANGER B849

ASA# 2850743

Polled Heterozygous Black Purebred Simmental Bull
Tattoo: B849 • Birthdate: 3/3/14
Adj. BW: 102 lbs • Adj. WW: 681 lbs • Adj. YW: 1355 lbs • ADG: 4.3 • WDA: 3.7 • SC: 39.6
Owned by: Roger Kenner

SIRE: SHS ENTICER P1B
HARVIE JDFWALLBANGER111X
JDF PEPSI 61U
KS CAPTN JACK T518
DAM: **KS WENDELLE W674**
KS MISS LEGACY T519

EPDs		CW 46.9
CE	5	YG -0.21
BW	3.7	MAR 0.13
WW	76	BF -0.07
YW	120	REA 0.60
MCE	11	STAY 24.6
MM	19	DDC 10.1
MW	57	API 127
ADG	0.278	TI 71

- Ranks #6 for ADG among the Purebred bulls in the sale.
- Maternal sister is lot 120.

KENNER SIMMENTAL RANCH

Black Purebred Simmental Bulls

BLACK PUREBRED BULLS



Lot 10

10 KS DOUBLE PLAY B46

ASA# 2850540

Homozygous Polled Heterozygous Black Purebred Simmental Bull

Tattoo: B46 • Birthdate: 2/21/14

Adj. BW: 93 lbs • Adj. WW: 833 lbs • Adj. YW: 1492 lbs • ADG: 4.2 • WDA: 3.9 • SC: 36.0

Owned by: Roger Kenner

SIRE: **BCLR SHAMWOW W611**
 — WS BEEF MAKER R13
 — BCLR MISS SHANIA S611
 — WS ALL IN W111
 DAM: **KS ZAYLEE Z904**
 — KS XARIA X601

EPDs	CW 55.7
CE 13	YG -0.16
BW 1.1	MAR 0.26
WW 91	BF -0.04
YW 142	REA 0.78
MCE 9	STAY
MM 28	DOC 12.9
MW 73	API 139
ADG 0.318	TI 86

- Ranks #5 for Adj. YW and #8 for ADG among the Purebred bulls in the sale. Ranks in the top 1% among Purebreds for ADG EPD.
- Dam is first calf heifer.
- More ShamWow sons sell as Lots 59-74 & 100-101.



KS Embassy Z7512- Sire of Lots 11-12

KS Embassy Z7512

Homozygous Black

Homozygous Polled

Embassy sold in the 2013 sale to G&D Simmentals of Calvin, ND. He impressed us with his thickness and muscle shape yet he is a very stylish bull. We sampled him last year and are very pleased with his calves. He sired 3 bull calves, with one being a twin that died at birth, so both bulls made the sale. Semen is available through G&D Simmentals.



Lot 11



Lot 12

11 KS POWER PLAY B661

ASA# 2850652

Homozygous Polled Homozygous Black Purebred Simmental Bull

Tattoo: B661 • Birthdate: 3/2/14

Adj. BW: 107 lbs • Adj. WW: 807 lbs • Adj. YW: 1491 lbs • ADG: 4.3 • WDA: 4.2 • SC: 41.6

Owned by: Roger Kenner

SIRE: **KS EMBASSY Z7512**
 — HTP SVF IN DEW TIME
 — KS KAYLA J497
 — BROOKS ABOVE PAR
 DAM: **KS TATUM T433**
 — KS KIM P276

EPDs	CW 58.8
CE 6	YG -0.10
BW 5.0	MAR 0.10
WW 88	BF -0.01
YW 137	REA 0.84
MCE 9	STAY 13.6
MM 16	DOC 14.1
MW 60	API 106
ADG 0.311	TI 75

- Ranks #6 for Adj. YW, #5 for ADG, and #4 for WDA among the Purebred bulls in the sale. Ranks in the top 1% among Purebreds for ADG EPD.
- Maternal brother sold in 2014 for \$10,000. Dam is granddam of Lot 42.



12 KS LINE DRIVE B831

ASA# 2850732

Homozygous Polled Homozygous Black Purebred Simmental Bull

Tattoo: B831 • Birthdate: 3/1/14

Adj. BW: 95 lbs • Adj. WW: 725 lbs • Adj. YW: 1361 lbs • ADG: 4.0 • WDA: 3.7 • SC: 37.5

Owned by: Roger Kenner

SIRE: **KS EMBASSY Z7512**
 — HTP SVF IN DEW TIME
 — KS KAYLA J497
 — WHEATLAND BULL 680S
 DAM: **KS WILLETTE W481**
 — KS RACHEL R156

EPDs	CW 31.6
CE 8	YG -0.23
BW 1.4	MAR 0.06
WW 64	BF -0.01
YW 100	REA 0.91
MCE 9	STAY 23.5
MM 18	DOC 12.6
MW 50	API 124
ADG 0.224	TI 66

KENNER SIMMENTAL RANCH

Black Purebred Simmental Bulls

BLACK PUREBRED BULLS

KR Sharp Shooter Z33

Homozygous Black **Homozygous Polled**
 Sharp Shooter was our pick of the bulls of the Edge of the West Sale in 2013 from Kaelberer Ranch. He is a TJ Sharper Image son and you will see his direct sons as lots 35-41. The Sharp Shooter calves have done well. Disposition is excellent. Semen available through Kenner Simmental Ranch.



KR Sharp Shooter Z33 - Sire of Lots 13-16

13 KS SHARP SHOOTER B815

ASA# 2850722

Homozygous Polled Homozygous Black Purebred Simmental Bull
 Tattoo: B815 • Birthdate: 4/8/14
 Adj. BW: 101 lbs • Adj. WW: 742 lbs • Adj. YW: 1367 lbs • ADG: 3.9 • WDA: 3.9 • SC: 37.5
 Owned by: Roger Kenner

SIRE: **KR SHARP SHOOTER Z33**
 — TJ SHARPER IMAGE 809U
 — BRANT PERFECT DREAM U9S
 — KS CAPTN JACK T518
 DAM: **KS WAVERLY W336**
 — KS DEMMI M978

EPDs		CW 39.0
CE	8	YG -0.16
BW	3.6	MAR 0.32
WW	70	BF -0.02
YW	107	REA 0.68
MCE	10	STAY
MM	26	DDC 9.8
MW	61	API 117
ADG	0.234	TI 70

- Maternal sister is lot 126.
- KS Demmi is the maternal granddam. 1st son of W336 sold for \$18,000 to Ron Brossart of Leeds, ND.

14 BGL BACKFIELD B134B

ASA# 2850919

Polled Homozygous Black Purebred Simmental Bull
 Tattoo: B134B • Birthdate: 3/2/14
 Adj. BW: 93 lbs • Adj. WW: 734 lbs • Adj. YW: 1283 lbs • ADG: 3.5 • WDA: 3.6 • SC: 36.6
 Owned by: Leapaldt Simmentals

SIRE: **KR SHARP SHOOTER Z33**
 — TJ SHARPER IMAGE 809U
 — BRANT PERFECT DREAM U9S
 — ELLINGSON BLACKPERFECTOR
 DAM: **BGL SHAYLA S97B**
 — BGL MISS FIGURES M77

EPDs		CW 32.5
CE	8	YG -0.05
BW	2.6	MAR 0.30
WW	64	BF -0.03
YW	99	REA 0.23
MCE	9	STAY
MM	30	DDC 13.8
MW	62	API 117
ADG	0.214	TI 68



Lot 14

15 KS SHARP SHOOTER B822

ASA# 2850726

Homozygous Polled Homozygous Black Purebred Simmental Bull
 Tattoo: B822 • Birthdate: 3/16/14
 Adj. BW: 104 lbs • Adj. WW: 789 lbs • Adj. YW: 1415 lbs • ADG: 4.0 • WDA: 4.0 • SC: 36.3
 Owned by: Roger Kenner

SIRE: **KR SHARP SHOOTER Z33**
 — TJ SHARPER IMAGE 809U
 — BRANT PERFECT DREAM U9S
 — WHEATLAND BULL 680S
 DAM: **KS WYNTER W436**
 — KS KAYLA J497

EPDs		CW 49.2
CE	4	YG -0.19
BW	4.2	MAR 0.18
WW	75	BF -0.03
YW	122	REA 0.86
MCE	8	STAY
MM	26	DDC 12.1
MW	64	API 99
ADG	0.297	TI 69

- Ties for #10 for WDA among the Purebred bulls in the sale. Ranks in the top 1% among Purebreds for ADG EPD.
- Dam is a full sister to KS Black Diamond.
- Maternal sister is lot 128.

16 KS SHARP SHOOTER B873

ASA# 2850758

Polled Homozygous Black Purebred Simmental Bull
 Tattoo: B873 • Birthdate: 3/20/14
 Adj. BW: 89 lbs • Adj. WW: 715 lbs • Adj. YW: 1276 lbs • ADG: 3.6 • WDA: 3.6 • SC: 36.6
 Owned by: Roger Kenner

SIRE: **KR SHARP SHOOTER Z33**
 — TJ SHARPER IMAGE 809U
 — BRANT PERFECT DREAM U9S
 — RC CLUB KING 040R
 DAM: **KS SUZIE X202**
 — KS MISS PERFECTOR L855

EPDs		CW 30.9
CE	11	YG -0.15
BW	0.5	MAR 0.27
WW	68	BF -0.02
YW	101	REA 0.55
MCE	10	STAY
MM	25	DDC 12.4
MW	59	API 130
ADG	0.211	TI 72

KENNER SIMMENTAL RANCH

Black Purebred Simmental Bulls

Sons of **NLC Break Free 72W**

17 **KS BREAK AWAY B13** ASA# 2850509

Homozygous Polled Heterozygous Black Purebred Simmental Bull

Tattoo: B13 • Birthdate: 2/23/14

Adj. BW: 96 lbs • Adj. WW: 830 lbs • Adj. YW: 1363 lbs • ADG: 3.4 • WDA: 3.7 • SC: 37.1

Owned by: Erika Kenner

SIRE: **NLC BREAK FREE 72W**
 — NLC STETSON 36S
 — NLC K7551 KAVALINE
 — SRF SHEAR FORCE 370W
 DAM: **KS ZAZA Z577**
 — KS JANA S264

EPDs	CW 42.2
CE 11	YG -0.35
BW 3.5	MAR 0.14
WW 77	BF -0.05
YW 113	REA 1.12
MCE 11	STAY
MM 23	DOC 8.1
MW 61	API 121
ADG 0.229	TI 71

• Dam is first calf heifer



18 **KS MR BREAK FREE B18** ASA# 2850514

Polled Homozygous Black Purebred Simmental Bull

Tattoo: B18 • Birthdate: 3/3/14

Adj. BW: 98 lbs • Adj. WW: 759 lbs • Adj. YW: 1331 lbs • ADG: 3.6 • WDA: 3.6 • SC: 37.6

Owned by: Erika Kenner

SIRE: **NLC BREAK FREE 72W**
 — NLC STETSON 36S
 — NLC K7551 KAVALINE
 — LFEBISS BLACKADVANCE426U
 DAM: **KS ZANNA Z626**
 — SHOESTRING FOCUS T13

EPDs	CW 42.3
CE 11	YG -0.29
BW 2.8	MAR 0.21
WW 76	BF -0.05
YW 115	REA 0.94
MCE 10	STAY
MM 17	DOC 7.4
MW 56	API 126
ADG 0.244	TI 73

• Dam is first calf heifer

19 **KS MR BREAK FREE B34** ASA# 2850529

Homozygous Polled Homozygous Black Purebred Simmental Bull

Tattoo: B34 • Birthdate: 2/20/14

Adj. BW: 94 lbs • Adj. WW: 828 lbs • Adj. YW: 1401 lbs • ADG: 3.6 • WDA: 3.7 • SC: 33.9

Owned by: Roger Kenner

SIRE: **NLC BREAK FREE 72W**
 — NLC STETSON 36S
 — NLC K7551 KAVALINE
 — SRF SHEAR FORCE 370W
 DAM: **KS ZEVIDA Z802**
 — KS WILLOW W137

EPDs	CW 38.8
CE 12	YG -0.28
BW 2.0	MAR 0.16
WW 74	BF -0.03
YW 111	REA 0.98
MCE 12	STAY
MM 22	DOC 6.3
MW 59	API 130
ADG 0.233	TI 71

• Dam is first calf heifer.

Sons of **KS Magic Mike Z903**



KS Magic Mike Z903 - Sire of Lots 20-21



Lot 21

20 **KS MR MAGIC MIKE B17** ASA# 2850513

Homozygous Polled Homozygous Black Purebred Simmental Bull

Tattoo: B17 • Birthdate: 2/28/14

Adj. BW: 111 lbs • Adj. WW: 892 lbs • Adj. YW: 1343 lbs • ADG: 2.9 • WDA: 3.7 • SC: 40.5

Owned by: Erika Kenner

SIRE: **KS MAGIC MIKE Z903**
 — ELLINGSON LEGACY M229
 — KS KARA X597
 — KS BLACK DIAMOND W992
 DAM: **KS ZAYLIN Z623**
 — SHOESTRING FOCUS T4

EPDs	CW 42.7
CE 9	YG -0.40
BW 3.6	MAR 0.09
WW 78	BF -0.10
YW 114	REA 0.87
MCE 10	STAY 14.3
MM 26	DOC 13.2
MW 65	API 110
ADG 0.227	TI 73

- Ranks #1 for Adj. WW among the Purebred bulls in the sale.
- Dam is first calf heifer
- Sire sold in our sale to Esty Ranch, Colorado in 2013 for \$14,000.

21 **KS EXTRA POINT B50** ASA# 2850544

Homozygous Polled Homozygous Black Purebred Simmental Bull

Tattoo: B50 • Birthdate: 2/25/14

Adj. BW: 102 lbs • Adj. WW: 744 lbs • Adj. YW: 1455 lbs • ADG: 4.5 • WDA: 3.8 • SC: 35.7

Owned by: Erika Kenner

SIRE: **KS MAGIC MIKE Z903**
 — ELLINGSON LEGACY M229
 — KS KARA X597
 — KS BLACK DIAMOND W992
 DAM: **KS ZANYA Z5321**
 — R3

EPDs	CW 49.7
CE 8	YG -0.32
BW 3.9	MAR 0.06
WW 76	BF -0.05
YW 124	REA 1.06
MCE 9	STAY 14.3
MM 26	DOC 12.2
MW 63	API 108
ADG 0.303	TI 71

- Ranks #8 for Adj. YW and #3 for ADG among the Purebred bulls in the sale.
- Ranks in the top 1% among Purebreds for ADG EPD.
- Dam is first calf heifer. Maternal granddam is now a donor for us.
- Sire sold in our sale to Esty Ranch, Colorado in 2013 for \$14,000.

KENNER SIMMENTAL RANCH

Black Purebred Simmental Bulls

BLACK PUREBRED BULLS



BBS Meatball Z19 - Sire of Lot 22

BBS Meatball Z19

Sire of Lots 22, 33 & 34

Heterozygous Black Homozygous Polled

We selected Meatball from the Bata Brothers offering in 2013. We were impressed with his performance, thickness and docility. We sampled him the first year and are happy with the progeny. We will have more calves by him on the ground this year. Owned with Bouchard Livestock. Semen available through Kenner Simmental Ranch.

22 KS MR MEATBALL B621

ASA# 2850632

Polled Heterozygous Black Purebred Simmental Bull

Tattoo: B621 • Birthdate: 3/2/14

Adj. BW: 87 lbs • Adj. WW: 694 lbs • Adj. YW: 1338 lbs • ADG: 4.1 • WDA: 3.7 • SC: 36.6

Owned by: Erika Kenner

SIRE: **BBS MEATBALL Z19**
 — TJ EASY MONEY 101W
 — BBS TATOR TOT X15
 — TNT HORIZON P211
 DAM: **TNT MISS S27**
 — TNT MISS P39

EPDs	
CW	32.4
CE	10
YG	-0.36
BW	1.6
MAR	0.18
WW	62
BF	-0.05
YW	100
REA	1.01
MCE	8
STAY	
MM	24
DOC	12.6
MW	55
API	116
ADG	0.238
TI	66

- Ranks #10 for ADG among the Purebred bulls in the sale.
- Purchased dam at the TNT Dispersal in 2009.



Lot 23

23 KS MR CURRENCY B586

ASA# 2850623

Polled Heterozygous Black Purebred Simmental Bull

Tattoo: B586 • Birthdate: 2/26/14

Adj. BW: 89 lbs • Adj. WW: 732 lbs • Adj. YW: 1269 lbs • ADG: 3.4 • WDA: 3.5 • SC: 36.3

Owned by: Erika Kenner

SIRE: **SVS BLK CURRENCY 231Y**
 — TNT TANKER U263
 — LFE KATARINA 604N
 — SRS J914 PREFERRED BEEF
 DAM: **KS DARMA S330**
 — KS SALLY N162

EPDs	
CW	26.0
CE	6
YG	-0.45
BW	2.4
MAR	-0.23
WW	59
BF	-0.06
YW	88
REA	1.13
MCE	13
STAY	23.1
MM	23
DOC	9.4
MW	52
API	102
ADG	0.179
TI	55

- Sire, SVS Currency, is owned by Mike Johnson, M&J Ranch, Larimore, ND. He is a heterozygous black power bull. Other sons are lots 24 & 97.



Lot 24

24 KS MR CURRENCY B959

ASA# 2850822

Polled Heterozygous Black Purebred Simmental Bull

Tattoo: B959 • Birthdate: 2/28/14

Adj. BW: 79 lbs • Adj. WW: 707 lbs • Adj. YW: 1371 lbs • ADG: 4.2 • WDA: 3.6 • SC: 36.0

Owned by: Erika Kenner

SIRE: **SVS BLK CURRENCY 231Y**
 — TNT TANKER U263
 — LFE KATARINA 604N
 — KS BLACK DIAMOND W992
 DAM: **KS MISS YAWNA Y541**
 — R44

EPDs	
CW	34.2
CE	9
YG	-0.35
BW	0.3
MAR	-0.19
WW	65
BF	-0.04
YW	107
REA	1.07
MCE	12
STAY	20.1
MM	25
DOC	11.3
MW	57
API	108
ADG	0.263
TI	63

- Ranks #7 for ADG among the Purebred bulls in the sale.
- Granddam is dam of lot 25.

25 KS MR BLK DIAMOND B541

ASA# 2850609

Polled Homozygous Black Purebred Simmental Bull

Tattoo: B541 • Birthdate: 2/27/14

Adj. BW: 90 lbs • Adj. WW: 698 lbs • Adj. YW: 1227 lbs • ADG: 3.3 • WDA: 3.4 • SC: 38.8

Owned by: Erika Kenner

SIRE: **KS BLACK DIAMOND W992**
 — WHEATLAND BULL 680S
 — KS KAYLA J497
 — N15
 DAM: **R44**
 — M4

EPDs	
CW	25.3
CE	8
YG	-0.47
BW	1.1
MAR	-0.14
WW	57
BF	-0.07
YW	90
REA	1.05
MCE	8
STAY	23.4
MM	23
DOC	11.2
MW	51
API	112
ADG	0.207
TI	58

- Dam is granddam of lot 24.

KENNER SIMMENTAL RANCH

Black Purebred Simmental Bulls & Black 3/4 SimAngus Bulls

BLACK PUREBRED BULLS

26 KS MR HEAVY DUTY B7971

ASA# 2850737

Homozygous Polled Heterozygous Black Purebred Simmental Bull

Tattoo: B7971 • Birthdate: 3/16/14 • Twin

Adj. BW: 92 lbs • Adj. WW: 720 lbs • Adj. YW: 1317 lbs • ADG: 3.8 • WDA: 3.7 • SC: 39.3

Owned by: Roger Kenner

SIRE: **BAS HEAVY DUTY**

— TNT DUAL FOCUS T249

— TNT MISS R144

DAM: **KS WILOMENA W80**

— HOOKS/KS SEQUOIA 35S

— KS DEMMI M978

EPDs		CW 32.3
CE 10	YG -0.24	
BW 3.2	MAR 0.43	
WW 61	BF -0.03	
YW 96	REA 0.82	
MCE 10	STAY	
MM 21	DOC 7.6	
MW 51	API 129	
ADG 0.222	TI 69	

• Same cow family as lots 6, 13, 72, 80, 81, 106 & 117 & 118 and the Demmi progeny.

28 KS MR ALL IN B988

ASA# 2850847

Homozygous Polled Heterozygous Black Purebred Simmental Bull

Tattoo: B988 • Birthdate: 2/28/14

Adj. BW: 100 lbs • Adj. WW: 776 lbs • Adj. YW: 1379 lbs • ADG: 3.8 • WDA: 3.6 • SC: 36.5

Owned by: Erika Kenner

SIRE: **WS ALL IN W111**

— HSF HIGH ROLLER 12T

— WS MISS TRACY T50

DAM: **SWAN LAKE NOPHALT 75 Z**

— LFE BLACK LAKOTA 385W

— DOUBLE BAR D NOPHALT 409U

EPDs		CW 46.1
CE 12	YG -0.13	
BW 3.4	MAR -0.02	
WW 82	BF -0.04	
YW 121	REA 0.58	
MCE 10	STAY 21.5	
MM 30	DOC 10.1	
MW 71	API 123	
ADG 0.241	TI 73	

• Dam is first calf heifer

• Purchased dam from Swan Lake Simmentals, Canada at the Shades Sale in 2013.

27 KS MR BLK GOLD B915

ASA# 2850788

Polled Homozygous Black Purebred Simmental Bull

Tattoo: B915 • Birthdate: 3/20/14

Adj. BW: 91 lbs • Adj. WW: 705 lbs • Adj. YW: 1291 lbs • ADG: 3.7 • WDA: 3.6 • SC: 36.6

Owned by: Roger Kenner

SIRE: **TRAXS BLACK GOLD Y57**

— KS BLACK DIAMOND W992

— SRS S21

DAM: **KS LOLA X717**

— HTP SVF IN DEW TIME

— KS ULAI U314

EPDs		CW 31.3
CE 8	YG -0.31	
BW 3.1	MAR 0.12	
WW 61	BF -0.06	
YW 95	REA 0.79	
MCE 8	STAY 15.1	
MM 26	DOC 8.4	
MW 56	API 106	
ADG 0.213	TI 84	



Black 3/4 SimAngus Bulls



29 BGL CENTERFIELD B164B

ASA# 2850945

Homozygous Polled Homozygous Black 3/4 SimAngus Bull

Tattoo: B164B • Birthdate: 3/5/14

Adj. BW: 87 lbs • Adj. WW: 758 lbs • Adj. YW: 1265 lbs • ADG: 3.2 • WDA: 3.5 • SC: 37.0

Owned by: Leapaltd Simmentals

SIRE: **KR SHARP SHOOTER Z33**

— TJ SHARPER IMAGE 809U

— BRANT PERFECT DREAM U9S

DAM: **BGL MISS YASMINE Y148B**

— KS BLACK DIAMOND W992

— BGL URSULA U134B

EPDs		CW 31.6
CE 8	YG -0.17	
BW 1.5	MAR 0.49	
WW 67	BF -0.02	
YW 100	REA 0.62	
MCE 9	STAY	
MM 30	DOC 13.1	
MW 63	API 129	
ADG 0.209	TI 76	

• Granddam is dam of lot 37.



30 KS PLAYMAKER B435

ASA# 2850569

Homozygous Polled Heterozygous Black 3/4 SimAngus Bull

Tattoo: B435 • Birthdate: 3/6/14

Adj. BW: 109 lbs • Adj. WW: 840 lbs • Adj. YW: 1483 lbs • ADG: 4.1 • WDA: 4.2 • SC: 39.0

Owned by: Roger Kenner

SIRE: **HOOKS SHEAR FORCE 38K**

— NICHOLS LEGACY G151

— C&D TRACY

DAM: **KS HOPE P287**

— BROOKS BUSHSTOCKER

— KS JENNIFER M86

EPDs		CW 42.9
CE 11	YG -0.40	
BW 2.8	MAR 0.56	
WW 79	BF -0.07	
YW 117	REA 1.09	
MCE 11	STAY	
MM 26	DOC 12.1	
MW 66	API 145	
ADG 0.236	TI 84	

• Ties for #4 for Adj. WW, ranks #3 for Adj. YW, and ties for #1 for WDA among the SimAngus bulls in the sale.

• Maternal sister is lot 138.

KENNER SIMMENTAL RANCH

Black 3/4 SimAngus Bulls

BLACK SIMANGUS BULLS

31 KS OVERTIME B678

ASA# 2850660

Homozygous Polled Homozygous Black 3/4 SimAngus Bull
Tattoo: B678 • Birthdate: 2/21/14
Adj. BW: 111 lbs • Adj. WW: 810 lbs • Adj. YW: 1482 lbs • ADG: 4.3 • WDA: 4.2 • SC: 38.3
Owned by: Roger Kenner

SIRE: **KS BLACK DIAMOND W992**
 — WHEATLAND BULL 680S
 — KS KAYLA J497
 DAM: **TNT MISS T1**
 — LCOC-GLXY YIELD GRADE390
 — TNT MISS R29

EPDs		CW 54.4
CE	6	YG -0.33
BW	4.8	MAR 0.19
WW	76	BF -0.08
YW	129	REA 0.98
MCE	8	STAY
MM	26	DOC 6.8
MW	64	API 102
ADG	0.332	TI 71

- Ranks #9 for Adj. WW, #4 for Adj. YW, #7 for ADG, and #3 for WDA among the SimAngus bulls in the sale. Ranks in the top 2% among SimAngus for ADG EPD.
- Purchased dam in TNT Dispersal of 2009.
- Same cow family as lot 49.



Lot 31

32 KS MR HEAVY DUTY B972

ASA# 2850833

Homozygous Polled Homozygous Black 3/4 SimAngus Bull
Tattoo: B972_ • Birthdate: 3/18/14
Adj. BW: 102 lbs • Adj. WW: 679 lbs • Adj. YW: 1243 lbs • ADG: 3.6 • WDA: 3.4 • SC: 36.6
Owned by: Roger Kenner

SIRE: **BAS HEAVY DUTY**
 — TNT DUAL FOCUS T249
 — TNT MISS R144
 DAM: **KS MISS YURIELA Y762**
 — TNT TANKER U263
 — KS URIEL U608

EPDs		CW 32.9
CE	7	YG -0.35
BW	3.9	MAR 0.23
WW	62	BF -0.07
YW	96	REA 0.86
MCE	10	STAY
MM	21	DOC 9.6
MW	52	API 109
ADG	0.211	TI 63

- Same cow family as lot 40.

33 KS MR MEATBALL B881

ASA# 2850766

Polled Homozygous Black 3/4 SimAngus Bull
Tattoo: B881 • Birthdate: 3/8/14
Adj. BW: 89 lbs • Adj. WW: 702 lbs • Adj. YW: 1376 lbs • ADG: 4.3 • WDA: 3.8 • SC: 37.6
Owned by: Roger Kenner

SIRE: **BBS MEATBALL Z19**
 — TJ EASY MONEY 101W
 — BBS TATOR TOT X15
 DAM: **KS LYDIA X336**
 — S A V FINAL ANSWER 0035
 — KS KAYLA J497

EPDs		CW 41.8
CE	10	YG -0.16
BW	1.2	MAR 0.14
WW	71	BF 0.03
YW	117	REA 1.11
MCE	10	STAY
MM	25	DOC 11.1
MW	60	API 113
ADG	0.289	TI 69

- Ranks #6 for ADG among the SimAngus bulls in the sale.
- Other Meatball sons are lots 22 & 34.



Lot 34

34 KS HALFBACK B984

ASA# 2850843

Homozygous Polled Heterozygous Black 3/4 SimAngus Bull
Tattoo: B984 • Birthdate: 3/3/14
Adj. BW: 92 lbs • Adj. WW: 809 lbs • Adj. YW: 1402 lbs • ADG: 3.8 • WDA: 3.9 • SC: 40.4
Owned by: Roger Kenner

SIRE: **BBS MEATBALL Z19**
 — TJ EASY MONEY 101W
 — BBS TATOR TOT X15
 DAM: **KS MS FINAL ANSWER Y619**
 — S A V FINAL ANSWER 0035
 — KS KAYLA J497

EPDs		CW 45.5
CE	9	YG -0.33
BW	2.0	MAR 0.21
WW	79	BF -0.05
YW	122	REA 1.07
MCE	10	STAY
MM	22	DOC 11.8
MW	61	API 115
ADG	0.272	TI 75

- Ranks #10 for Adj. WW and #10 for WDA among the SimAngus bulls in the sale.

Trailing the cows home in the Fall.



KENNER SIMMENTAL RANCH

Black 3/4 & 1/2 SimAngus Bulls

BLACK SIMANGUS BULLS

Sons of TJ Sharper Image 809U



38 KS SHARPER IMAGE B642

ASA# 2850646

Polled Homozygous Black 1/2 SimAngus Bull
Tattoo: B642 • Birthdate: 2/25/14
Adj. BW: 86 lbs • Adj. WW: 675 lbs • Adj. YW: 1299 lbs • ADG: 4.0 • WDA: 3.6 • SC: 38.2
Owned by: Roger Kenner

SIRE: **TJ SHARPER IMAGE 809U**
— DIKEMANS SURE BET
— T J MISS BANDO S27

DAM: **KS MISS VRD T235**
— VERMILION DATELINE 7078
— KS TANISHA M104

EPDs	CW 34.3
CE 9	YG -0.05
BW 0.4	MAR 0.49
WW 67	BF -0.01
YW 107	REA 0.34
MCE 13	STAY
MM 28	DOC 15.8
MW 61	API 135
ADG 0.251	TI 76

35 KS SHARPER IMAGE B498

ASA# 2850589

Homozygous Polled Homozygous Black 1/2 SimAngus Bull
Tattoo: B498 • Birthdate: 3/8/14
Adj. BW: 98 lbs • Adj. WW: 684 lbs • Adj. YW: 1327 lbs • ADG: 4.1 • WDA: 3.8 • SC: 37.3
Owned by: Roger Kenner

SIRE: **TJ SHARPER IMAGE 809U**
— DIKEMANS SURE BET
— T J MISS BANDO S27

DAM: **KS RASHANDA R289**
— SITZ ALLIANCE 6595
— KS BRITTA K140

EPDs	CW 41.8
CE 6	YG 0.12
BW 3.2	MAR 0.53
WW 70	BF 0.02
YW 112	REA 0.19
MCE 10	STAY
MM 30	DOC 16.6
MW 65	API 120
ADG 0.267	TI 74

36 BGL POINT AFTER B139B

ASA# 2850922

Homozygous Polled Homozygous Black 3/4 SimAngus Bull
Tattoo: B139B • Birthdate: 2/23/14
Adj. BW: 88 lbs • Adj. WW: 690 lbs • Adj. YW: 1347 lbs • ADG: 4.2 • WDA: 3.7 • SC: 36.9
Owned by: Leapaldt Simmentals

SIRE: **TJ SHARPER IMAGE 809U**
— DIKEMANS SURE BET
— T J MISS BANDO S27

DAM: **BGL TORI T111B**
— ES DAKOTA NK68
— BGL MISS FIGURES M61

EPDs	CW 42.3
CE 8	YG -0.17
BW 2.0	MAR 0.25
WW 73	BF -0.04
YW 117	REA 0.64
MCE 12	STAY
MM 27	DOC 14.8
MW 63	API 121
ADG 0.270	TI 73

• Ranks #8 for ADG among the SimAngus bulls in the sale.

37 BGL FREE AGENT B148B

ASA# 2850927

Homozygous Polled Homozygous Black 1/2 SimAngus Bull
Tattoo: B148B • Birthdate: 2/22/14
Adj. BW: 97 lbs • Adj. WW: 816 lbs • Adj. YW: 1470 lbs • ADG: 4.2 • WDA: 4.2 • SC: 38.6
Owned by: Leapaldt Simmentals

SIRE: **TJ SHARPER IMAGE 809U**
— DIKEMANS SURE BET
— T J MISS BANDO S27

DAM: **BGL URSULA U134B**
— B C C BUSHWACKER 41-93
— BGL SHAYLA S97B

EPDs	CW 56.5
CE 7	YG 0.04
BW 2.6	MAR 0.34
WW 88	BF 0.04
YW 139	REA 0.74
MCE 10	STAY
MM 30	DOC 15.4
MW 74	API 117
ADG 0.322	TI 81

• Ranks #6 for Adj. WW, #5 for Adj. YW, #9 for ADG, and #4 for WDA among the SimAngus bulls in the sale. Ranks in the top 2% among SimAngus for ADG EPD.

• Dam is granddam of lot 29.



39 KS SHARPER IMAGE B704

ASA# 2850669

Polled Homozygous Black 1/2 SimAngus Bull
Tattoo: B704 • Birthdate: 3/10/14
Adj. BW: 94 lbs • Adj. WW: 713 lbs • Adj. YW: 1153 lbs • ADG: 2.8 • WDA: 3.4 • SC: 32.9
Owned by: Roger Kenner

SIRE: **TJ SHARPER IMAGE 809U**
— DIKEMANS SURE BET
— T J MISS BANDO S27

DAM: **KS UMA Y196**
— S A V 8180 TRAVELER 004
— KS KAYLA J497

EPDs	CW 35.2
CE 7	YG -0.10
BW 2.4	MAR 0.16
WW 70	BF -0.04
YW 104	REA 0.29
MCE 11	STAY
MM 26	DOC 13.1
MW 60	API 105
ADG 0.215	TI 66

KENNER SIMMENTAL RANCH

Black 1/2 SimAngus Bulls

BLACK SIMANGUS BULLS

40 KS UNDEFEATED B762

ASA# 2850698

Homozygous Polled Homozygous Black 1/2 SimAngus Bull
 Tattoo: B762 • Birthdate: 2/24/14
 Adj. BW: 100 lbs • Adj. WW: 769 lbs • Adj. YW: 1397 lbs • ADG: 4.0 • WDA: 4.0 • SC: 37.7
 Owned by: Roger Kenner

SIRE: **TJ SHARPER IMAGE 809U**
 — DIKEMANS SURE BET
 — T J MISS BANDO S27
 — B C C BUSHWACKER 41-93
 DAM: **KS URIEL U608**
 — KS MISS PERFECTOR S817

EPDs	
CE	6
BW	3.0
WW	82
YW	129
MCE	8
MM	24
MW	65
ADG	0.291
CW	50.8
YG	0.07
MAR	0.63
BF	0.03
REA	0.49
STAY	
DDC	15.4
API	126
TI	83

- Ties #9 for WDA among the SimAngus bulls in the sale. Ranks in the top 10% among SimAngus for ADG EPD.
- Same cow family as lot 32.
- Dam is now a donor for us.



Lot 40

41 KS BAZOOKA B798

ASA# 2850713

Homozygous Polled Homozygous Black 1/2 SimAngus Bull
 Tattoo: B798 • Birthdate: 2/21/14
 Adj. BW: 97 lbs • Adj. WW: 802 lbs • Adj. YW: 1512 lbs • ADG: 4.5 • WDA: 4.2 • SC: 39.5
 Owned by: Roger Kenner

SIRE: **TJ SHARPER IMAGE 809U**
 — DIKEMANS SURE BET
 — T J MISS BANDO S27
 — B C MATRIX 4132
 DAM: **KS WANDY W82**
 — KS KAYLA J497

EPDs	
CE	6
BW	3.2
WW	89
YW	143
MCE	10
MM	25
MW	69
ADG	0.338
CW	59.7
YG	0.05
MAR	0.24
BF	0.01
REA	0.58
STAY	
DDC	14.3
API	109
TI	78

- Ranks #2 for Adj. YW, #4 for ADG, and ties for #1 for WDA among the SimAngus bulls in the sale. Ranks in the top 1% among SimAngus for ADG EPD.



Lot 41

42 KS HOME RUN B23

ASA# 2850519

Homozygous Polled Homozygous Black 1/2 SimAngus Bull
 Tattoo: B23 • Birthdate: 2/14/14
 Adj. BW: 71 lbs • Adj. WW: 721 lbs • Adj. YW: 1514 lbs • ADG: 5.1 • WDA: 3.9 • SC: 36.2
 Owned by: Roger Kenner

SIRE: **ELLINGSON IDENTITY 9104**
 — TC ABERDEEN 759
 — EA QUEEN DOLLY 7813
 — HOOKS SHEAR FORCE 38K
 DAM: **KS ZOEY Z661**
 — KS TATUM T433

EPDs	
CE	20
BW	-2.6
WW	70
YW	123
MCE	12
MM	32
MW	66
ADG	0.331
CW	39.8
YG	-0.21
MAR	0.52
BF	0.02
REA	1.20
STAY	
DDC	13.8
API	165
TI	84

- Ranks #1 for Adj. YW and #1 for ADG among the SimAngus bulls in the sale. Ranks in the top 2% among SimAngus for ADG EPD.
- Dam is first calf heifer. Same cow family as lot 11.
- Only had 1 bull calf out of Identity, the rest are all heifers.



Ellingson Identity 9104 - Sire to Lot 42



EA Queen Dolly 7813 - Dam of Identity 9104



The annual roundup in the Fall involves a lot of people as we trail the cows 7 miles home for the winter. Our newest employee, Scott, was excited to play cowboy for the first time!



Lot 42

KENNER SIMMENTAL RANCH

Black 1/2 SimAngus Bulls

BLACK SIMANGUS BULLS



Ellingson Durango 2156 - Sire of Lots 43-48

Ellingson Durango 2156

Purebred Angus

We purchased Durango from Ellingson Angus – Chad & Julie Ellingson – of St. Anthony, ND in 2013 to be one of our heifer bulls. We were pleased with his calving ease and used him extensively again. He has a good disposition and some of his sons in this sale should be suitable for heifers.

43 BGL MR DURANGO B122B

ASA# 2850918

Homozygous Polled Homozygous Black 1/2 SimAngus Bull

Tattoo: B122B • Birthdate: 3/22/14

Adj. BW: 90 lbs • Adj. WW: 720 lbs • Adj. YW: 1362 lbs • ADG: 4.1 • WDA: 3.9 • SC: 39.4

Owned by: Leapaldt Simmentals

SIRE: **ELLINGSON DURANGO 2156**
 — EA BLACKCAP 9268
 — SS STARLIGHT K79
 DAM: **BGL AMANDA R81B**
 — BGL MISS WHAM L55

EPDs		CW 37.4
CE 11	YG -0.11	
BW 0.5	MAR 0.36	
WW 68	BF -0.03	
YW 112	REA 0.48	
MCE 12	STAY	
MM 22	DOC 10.9	
MW 56	API 131	
ADG 0.273	TI 73	

44 KS MR DURANGO B11

ASA# 2850507

Polled Homozygous Black 1/2 SimAngus Bull

Tattoo: B11 • Birthdate: 3/15/14

Adj. BW: 77 lbs • Adj. WW: 704 lbs • Adj. YW: 1429 lbs • ADG: 4.6 • WDA: 3.8 • SC: 35.6

Owned by: Roger Kenner

SIRE: **ELLINGSON DURANGO 2156**
 — EA BLACKCAP 9268
 — HOOKS SHEAR FORCE 38K
 DAM: **KS ZENNIFER Z566**
 — KS KAYLA J497

EPDs		CW 32.9
CE 15	YG -0.17	
BW -2.6	MAR 0.38	
WW 63	BF -0.01	
YW 111	REA 0.77	
MCE 11	STAY	
MM 28	DOC 11.3	
MW 60	API 148	
ADG 0.303	TI 76	

- Ranks #10 for Adj. YW and #2 for ADG among the SimAngus bulls in the sale. Ranks in the top 4% among SimAngus for ADG EPD.
- Dam is first calf heifer
- Dams of lots 44, 45 & 46 are all flush sisters to each other.

45 KS MR DURANGO B52

ASA# 2850548

Polled Homozygous Black 1/2 SimAngus Bull

Tattoo: B52 • Birthdate: 3/10/14

Adj. BW: 96 lbs • Adj. WW: 754 lbs • Adj. YW: 1388 lbs • ADG: 4.1 • WDA: 3.7 • SC: 39.4

Owned by: Roger Kenner

SIRE: **ELLINGSON DURANGO 2156**
 — EA BLACKCAP 9268
 — HOOKS SHEAR FORCE 38K
 DAM: **KS ZENITH Z7364**
 — KS KAYLA J497

EPDs		CW 36.4
CE 13	YG -0.10	
BW 0.2	MAR 0.52	
WW 66	BF -0.02	
YW 111	REA 0.52	
MCE 10	STAY	
MM 27	DOC 11.3	
MW 60	API 142	
ADG 0.278	TI 77	

- Dam is first calf heifer.
- Dams of lots 44, 45 & 46 are all flush sisters to each other.



Lot 45

46 KS MR DURANGO B53

ASA# 2850549

Scurred Homozygous Black 1/2 SimAngus Bull

Tattoo: B53 • Birthdate: 3/12/14

Adj. BW: 85 lbs • Adj. WW: 733 lbs • Adj. YW: 1450 lbs • ADG: 4.6 • WDA: 3.9 • SC: 39.5

Owned by: Roger Kenner

SIRE: **ELLINGSON DURANGO 2156**
 — EA BLACKCAP 9268
 — HOOKS SHEAR FORCE 38K
 DAM: **KS ZOLIE Z7742**
 — KS KAYLA J497

EPDs		CW 37.8
CE 14	YG -0.21	
BW -1.3	MAR 0.31	
WW 67	BF -0.04	
YW 116	REA 0.71	
MCE 11	STAY	
MM 28	DOC 10.3	
MW 61	API 139	
ADG 0.310	TI 75	

- Ranks #7 for Adj. YW and #3 for ADG among the SimAngus bulls in the sale. Ranks in the top 3% among SimAngus for ADG EPD.
- Dam is first calf heifer.
- Dams of lots 44, 45 & 46 are all flush sisters to each other.



Lot 46

KENNER SIMMENTAL RANCH

Black 1/2 SimAngus Bulls

47 KS MR DURANGO B54

ASA# 2850550

Polled Homozygous Black 1/2 SimAngus Bull
Tattoo: B54 • Birthdate: 3/13/14
Adj. BW: 93 lbs • Adj. WW: 743 lbs • Adj. YW: 1359 lbs • ADG: 4.0 • WDA: 3.7 • SC: 36.5
Owned by: Roger Kenner

SIRE: **ELLINGSON DURANGO 2156**
SITZ DIMENSION 8607
EA BLACKCAP 9268
HTP SVF IN DEW TIME
DAM: **KS ZAKEIRA Z8721**
KS KAYLA J497

EPDs		CW 36.4
CE 11	YG -0.11	
BW 0.4	MAR 0.44	
WW 67	BF -0.03	
YW 110	REA 0.44	
MCE 12	STAY	
MM 21	DOC 13.9	
MW 55	API 136	
ADG 0.269	TI 75	

• Dam is first calf heifer

48 KS MR DURANGO B55

ASA# 2850551

Polled Homozygous Black 1/2 SimAngus Bull
Tattoo: B55 • Birthdate: 4/8/14
Adj. BW: 88 lbs • Adj. WW: 711 lbs • Adj. YW: 1372 lbs • ADG: 4.1 • WDA: 3.7 • SC: 33.2
Owned by: Roger Kenner

SIRE: **ELLINGSON DURANGO 2156**
SITZ DIMENSION 8607
EA BLACKCAP 9268
BAS HEAVY DUTY
DAM: **KS ZANITA Z8852**
KS KAYLA J497

EPDs		CW 34.0
CE 11	YG -0.14	
BW 0.0	MAR 0.46	
WW 62	BF -0.04	
YW 106	REA 0.41	
MCE 10	STAY	
MM 24	DOC 9.2	
MW 55	API 130	
ADG 0.280	TI 72	

• Ranks #10 for ADG among the SimAngus bulls in the sale.
• Dam is first calf heifer



KS Tailored Y304 - Sire of Lots 49-51

KS Tailored Y304

Homozygous Black Homozygous Polled

We sold KS Tailored to Western Cattle Source, Crawford, NE in our 2012 sale. His calves are standouts each year, including the females. Last year, one of our best SimAngus bulls was out of him and sold to Tyler Larson, Cleveland, ND. Unfortunately, Tailored was accidentally shot by a hunter in the pasture in 2013. There was limited semen on him, so there will not be many more out of him.



Lot 50

49 KS MR TAILORED B24

ASA# 2850520

Homozygous Polled Homozygous Black 1/2 SimAngus Bull
Tattoo: B24 • Birthdate: 2/12/14
Adj. BW: 79 lbs • Adj. WW: 714 lbs • Adj. YW: 1270 lbs • ADG: 3.6 • WDA: 3.3 • SC: 35.1
Owned by: Roger Kenner

SIRE: **KS TAILORED Y304**
HF KODIAK 5R
KS KAYLA J497
KS VEGAS X130
DAM: **KS ZOE Z678**
TNT MISS T1

EPDs		CW 22.5
CE 13	YG -0.20	
BW -0.3	MAR 0.47	
WW 57	BF -0.04	
YW 89	REA 0.46	
MCE 10	STAY	
MM 24	DOC 10.5	
MW 53	API 139	
ADG 0.198	TI 71	

• Dam is first calf heifer.
• Same cow family as lot 31.

50 KS HAT TRICK B545

ASA# 2850610

Homozygous Polled Homozygous Black 1/2 SimAngus Bull
Tattoo: B545 • Birthdate: 2/23/14
Adj. BW: 110 lbs • Adj. WW: 731 lbs • Adj. YW: 1416 lbs • ADG: 4.3 • WDA: 3.9 • SC: 39.1
Owned by: Erika Kenner

SIRE: **KS TAILORED Y304**
HF KODIAK 5R
KS KAYLA J497
LEMMON NEWSLINE C804
DAM: **SHOESTRING NEWSLINE S1**
P26

EPDs		CW 43.4
CE 7	YG -0.37	
BW 3.8	MAR 0.43	
WW 69	BF -0.10	
YW 113	REA 0.82	
MCE 10	STAY	
MM 19	DOC 12.5	
MW 53	API 116	
ADG 0.279	TI 72	

• Ranks #5 for ADG and ties for #9 among the SimAngus bulls in the sale.

51 KS MR TAILORED B622

ASA# 2850634

Polled Homozygous Black 1/2 SimAngus Bull
Tattoo: B622 • Birthdate: 3/1/14
Adj. BW: 92 lbs • Adj. WW: 657 lbs • Adj. YW: 1260 lbs • ADG: 3.8 • WDA: 3.6 • SC: 37.0
Owned by: Erika Kenner

SIRE: **KS TAILORED Y304**
HF KODIAK 5R
KS KAYLA J497
S A V 004 DENSITY 4336
DAM: **TNT MISS S36**
TNT MISS P68

EPDs		CW 31.9
CE 9	YG -0.17	
BW 3.4	MAR 0.39	
WW 59	BF -0.04	
YW 95	REA 0.53	
MCE 5	STAY	
MM 22	DOC 11.4	
MW 52	API 108	
ADG 0.226	TI 65	

• Purchased dam from TNT Dispersal in 2009.

KENNER SIMMENTAL RANCH

Black 1/2 SimAngus Bulls

BLACK SIMANGUS BULLS



Benfield Substance 8506 - Sire of Lots 52-55



Benfield Substance 8506

Purebred Angus

We sold our first Benfield Substance calves in the 2014 sale. There were 5 in the sale and they averaged \$8,150. Ellingson Angus will sell their 5th year of sons of him this year and last year they were one of the high-selling sire groups for them. The bulls are strong, but the females look great too! We are excited to calve out our first group of females by him this year.

52 BGL UMPIRE B142B

ASA# 2850924

Homozygous Polled Homozygous Black 1/2 SimAngus Bull

Tattoo: B142B • Birthdate: 2/21/14

Adj. BW: 95 lbs • Adj. WW: 723 lbs • Adj. YW: 1357 lbs • ADG: 4.1 • WDA: 3.8 • SC: 36.0

Owned by: Leapaldt Simmentals

- SIRE: **BENFIELD SUBSTANCE 8506**
- H A IMAGE MAKER 0415
 - BENFIELD EDELLA 1105
- DAM: **TNT MISS U92**
- TNT KNOCK OUT R206
 - TNT MISS TARRYN R37

EPDs	
CE	7
BW	3.0
WW	76
YW	120
MCE	6
MM	21
MW	59
ADG	0.273
CW	45.6
YG	-0.04
MAR	0.01
BF	-0.01
REA	0.48
STAY	
DDC	12.3
API	90
TI	65

• Maternal sister is lot 121.



Lot 52



Lot 53

53 KS BIG LEAGUE B492

ASA# 2850587

Homozygous Polled Homozygous Black 1/2 SimAngus Bull

Tattoo: B492 • Birthdate: 2/18/14

Adj. BW: 85 lbs • Adj. WW: 783 lbs • Adj. YW: 1417 lbs • ADG: 4.1 • WDA: 4.0 • SC: 34.9

Owned by: Roger Kenner

- SIRE: **BENFIELD SUBSTANCE 8506**
- H A IMAGE MAKER 0415
 - BENFIELD EDELLA 1105
 - SRS BLACK ROCK 3N
- DAM: **KS RIANA R257**
- KS JANE M58

EPDs	
CE	11
BW	1.6
WW	77
YW	123
MCE	10
MM	29
MW	67
ADG	0.287
CW	45.3
YG	-0.08
MAR	0.18
BF	-0.02
REA	0.52
STAY	
DDC	11.9
API	120
TI	73

• Ranks #8 for WDA among the SimAngus bulls in the sale.

54 KS NO HITTER B494

ASA# 2850588

Homozygous Polled Homozygous Black 1/2 SimAngus Bull

Tattoo: B494 • Birthdate: 2/13/14

Adj. BW: 76 lbs • Adj. WW: 697 lbs • Adj. YW: 1247 lbs • ADG: 3.5 • WDA: 3.5 • SC: 38.2

Owned by: Roger Kenner

- SIRE: **BENFIELD SUBSTANCE 8506**
- H A IMAGE MAKER 0415
 - BENFIELD EDELLA 1105
 - SRS BLACK ROCK 3N
- DAM: **KS RILEY R264**
- KS JILL M67

EPDs	
CE	14
BW	-1.4
WW	59
YW	94
MCE	9
MM	32
MW	62
ADG	0.216
CW	23.9
YG	-0.19
MAR	0.15
BF	-0.03
REA	0.55
STAY	
DDC	11.9
API	125
TI	67

• Half sister sold in the 2013 State Simmental sale to Jacob Hauck, Forbes, ND



Lot 54

KENNER SIMMENTAL RANCH

Black 1/2 SimAngus Bulls

BLACK SIMANGUS BULLS

55 KS MR SUBSTANCE B705

ASA# 2850670

Homozygous Polled Homozygous Black 1/2 SimAngus Bull
Tattoo: B705 • Birthdate: 2/24/14
Adj. BW: 104 lbs • Adj. WW: 781 lbs • Adj. YW: 1292 lbs • ADG: 3.3 • WDA: 3.7 • SC: 40.7
Owned by: Erika Kenner

SIRE: **BENFIELD SUBSTANCE 8506**
 — H A IMAGE MAKER 0415
 — BENFIELD EDELLA 1105
 — ELLINGSON BLACKPERFECTOR
 DAM: **KS URIJAH U212**
 — KS BRENDA L908

EPDs	
CE 8	CW 41.2
BW 3.8	YG 0.13
WW 76	MAR 0.48
YW 111	BF 0.02
MCE 7	REA 0.15
MM 25	STAY
MW 63	DOC 12.0
ADG 0.221	API 119
	TI 75



Lot 55

Sons of KS Vegas X130

56 BGL MR VEGAS B151B

ASA# 2850929

Homozygous Polled Homozygous Black 1/2 SimAngus Bull
Tattoo: B151B • Birthdate: 2/26/14
Adj. BW: 93 lbs • Adj. WW: 675 lbs • Adj. YW: 1289 lbs • ADG: 3.9 • WDA: 3.6 • SC: 37.8
Owned by: Leapaldt Simmentals

SIRE: **KS VEGAS X130**
 — S A V FINAL ANSWER 0035
 — ELLINGSON MS LEGACY N362
 — S A V NET WORTH 4200
 DAM: **BGL WANETA W109B**
 — R&R MISS CASH N334

EPDs	
CE 6	CW 32.7
BW 2.0	YG -0.21
WW 66	MAR 0.49
YW 101	BF -0.04
MCE 5	REA 0.62
MM 22	STAY
MW 55	DOC 6.0
ADG 0.216	API 113
	TI 73



KS Vegas X130 - Sire of Lots 56-58

57 KS ROYAL B2

ASA# 2850498

Homozygous Polled Homozygous Black 1/2 SimAngus Bull
Tattoo: B2 • Birthdate: 2/13/14 • •
Adj. BW: 89 lbs • Adj. WW: 811 lbs • Adj. YW: 1387 lbs • ADG: 3.7 • WDA: 3.7 • SC: 36.2
Owned by: Roger Kenner

SIRE: **KS VEGAS X130**
 — S A V FINAL ANSWER 0035
 — ELLINGSON MS LEGACY N362
 — HF KODIAK 5R
 DAM: **KS ZOLARA Z486**
 — KS MISS ABOVE PAR R186

EPDs	
CE 10	CW 32.2
BW 0.0	YG -0.15
WW 70	MAR 0.15
YW 105	BF -0.02
MCE 5	REA 0.61
MM 23	STAY
MW 58	DOC 11.9
ADG 0.219	API 111
	TI 69



Lot 57

58 KS MR VEGAS B996

ASA# 2850855

Polled Homozygous Black 1/2 SimAngus Bull
Tattoo: B996 • Birthdate: 2/17/14 • •
Adj. BW: 83 lbs • Adj. WW: 702 lbs • Adj. YW: 1274 lbs • ADG: 3.7 • WDA: 3.4 • SC: 35.8
Owned by: Roger Kenner

SIRE: **KS VEGAS X130**
 — S A V FINAL ANSWER 0035
 — ELLINGSON MS LEGACY N362
 — HF KODIAK 5R
 DAM: **KS ZARNA Z392**
 — NL C P18 PAULETTE

EPDs	
CE 12	CW 23.4
BW -0.7	YG -0.18
WW 62	MAR 0.58
YW 92	BF -0.05
MCE 5	REA 0.36
MM 23	STAY
MW 54	DOC 12.2
ADG 0.186	API 136
	TI 76



Roger's grandson, Osker, always wanted to go check the calves with Erika this past calving season. He learned he needed to be quiet around them, as they didn't know who he was. So he told them, "Cows! It's just me - Osker!"

- Ranks #8 for Adj. WW among the SimAngus bulls in the sale.
- Dam is first calf heifer

- Dam is first calf heifer

KENNER SIMMENTAL RANCH

Red Purebred Simmental Bulls



BCLR ShamWow W611 - Sire of Lots 59-74 & Others

BCLR ShamWow W611

Non-diluted Red Homozygous Polled

ShamWow has been one of the best all-around bulls for us. We purchased him from Bichler Simmentals in 2010 and Doug Bichler named him ShamWow as he felt he could "Clean up any mess!" That is totally accurate. He is the type of bull that has excellent phenotype, calving ease, performance, carcass and disposition. His bulls in this sale have performed so well and rank very high for many of their EPD categories. There are 19 sons of ShamWow in this sale and 3 heifers. His daughters are exceptional as well – easy fleshing, beautiful udders and quiet dispositions. ShamWow's granddam was purchased by Doug Bichler in our 2006 Production sale and was carrying a Cherokee Cnyn heifer calf (ShamWow's mother).

RED PUREBRED BULLS

59 KS MR SHAMWOW B482

ASA# 2850583

Homozygous Polled Red Purebred Simmental Bull
Tattoo: B482 • Birthdate: 3/22/14 • DLF • ET
Adj. BW: 103 lbs • Adj. WW: 751 lbs • Adj. YW: 1449 lbs • ADG: 4.4 • WDA: 4.1 • SC: 39.7
Owned by: Roger Kenner

SIRE: **BCLR SHAMWOW W611**
 _____ WS BEEF MAKER R13
 _____ BCLR MISS SHANIA S611
 DAM: **TNT MISS S47**
 _____ HART EXTRA EFFORT G289
 _____ TNT MISS APRIL N134

EPDs	
CW	38.5
CE	9
YG	-0.14
BW	1.6
MAR	0.21
WW	75
BF	-0.03
YW	112
REA	0.55
MCE	8
STAY	
MM	24
DOC	11.3
MW	61
API	119
ADG	0.233
TI	73

- Ranks #9 for Adj. YW, #4 for ADG and #7 for WDA among the Purebred bulls in the sale.
- ET siblings are lots 60-62, 82-84, 92, 119 & 169.



Lot 59

60 KS MR SHAMWOW B631

ASA# 2850641

Homozygous Polled Red Purebred Simmental Bull
Tattoo: B631 • Birthdate: 3/17/14 • DLF • ET
Adj. BW: 96 lbs • Adj. WW: 853 lbs • Adj. YW: 1305 lbs • ADG: 2.9 • WDA: 3.8 • SC: 39.9
Owned by: Roger Kenner

SIRE: **BCLR SHAMWOW W611**
 _____ WS BEEF MAKER R13
 _____ BCLR MISS SHANIA S611
 DAM: **TNT MISS S47**
 _____ HART EXTRA EFFORT G289
 _____ TNT MISS APRIL N134

EPDs	
CW	38.5
CE	9
YG	-0.18
BW	1.6
MAR	0.25
WW	75
BF	-0.05
YW	112
REA	0.55
MCE	8
STAY	
MM	24
DOC	11.3
MW	61
API	121
ADG	0.233
TI	74

- Ranks #5 for Adj. WW among the Purebred bulls in the sale.
- Full brothers are lots 59 – 62.



Lot 60

61 KS DRAFT PICK B747

ASA# 2850690

Homozygous Polled Red Purebred Simmental Bull
Tattoo: B747 • Birthdate: 3/20/14 • DLF • ET
Adj. BW: 101 lbs • Adj. WW: 849 lbs • Adj. YW: 1499 lbs • ADG: 4.1 • WDA: 4.3 • SC: 41.1
Owned by: Roger Kenner

SIRE: **BCLR SHAMWOW W611**
 _____ WS BEEF MAKER R13
 _____ BCLR MISS SHANIA S611
 DAM: **TNT MISS S47**
 _____ HART EXTRA EFFORT G289
 _____ TNT MISS APRIL N134

EPDs	
CW	38.5
CE	9
YG	-0.16
BW	1.6
MAR	0.00
WW	75
BF	-0.02
YW	112
REA	0.69
MCE	8
STAY	
MM	24
DOC	11.3
MW	61
API	108
ADG	0.233
TI	67

- Ranks #7 for Adj. WW, #4 for Adj. YW, #9 for ADG, and #2 for WDA among the Purebred bulls in the sale.
- Will hopefully have GGP-LD DNA test done by sale day.



Lot 61

KENNER SIMMENTAL RANCH

Red Purebred Simmental Bulls

62 KS MR SHAMWOW B641

ASA# 2850645

Homozygous Polled Red Purebred Simmental Bull
Tattoo: B641 • Birthdate: 3/22/14 • DLF • ET
Adj. BW: 89 lbs • Adj. WW: 769 lbs • Adj. YW: 1319 lbs • ADG: 3.5 • WDA: 3.8 • SC: 37.7
Owned by: Roger Kenner

SIRE: **BCLR SHAMWOW W611**
 — WS BEEF MAKER R13
 — BCLR MISS SHANIA S611
 — HART EXTRA EFFORT G289
 DAM: **TNT MISS A47**
 — TNT MISS APRIL N134

EPDs	
CE	9
BW	1.6
WW	75
YW	112
MCE	8
MM	24
MW	61
ADG	0.233
CW	38.5
YG	-0.13
MAR	0.11
BF	-0.03
REA	0.54
STAY	
DOC	11.3
API	114
TI	70

63 KS MR SHAMWOW B12

ASA# 2850508

Homozygous Polled Red Purebred Simmental Bull
Tattoo: B12 • Birthdate: 3/15/14 • DLF
Adj. BW: 104 lbs • Adj. WW: 843 lbs • Adj. YW: 1448 lbs • ADG: 3.8 • WDA: 3.9 • SC: 38.3
Owned by: Erika Kenner

SIRE: **BCLR SHAMWOW W611**
 — WS BEEF MAKER R13
 — BCLR MISS SHANIA S611
 — WS ALL IN W111
 DAM: **KS ZALTANA Z570**
 — KS MISS RED ROCK S205

EPDs	
CE	7
BW	5.2
WW	90
YW	137
MCE	9
MM	27
MW	73
ADG	0.290
CW	58.5
YG	-0.17
MAR	0.21
BF	-0.06
REA	0.70
STAY	
DOC	12.0
API	113
TI	78

- Ranks #10 for Adj. WW and #10 for Adj. YW among the Purebred bulls in the sale. Ranks in the top 1% among Purebreds for ADG EPD.
- Dam is first calf heifer

64 KS TRIPLE PLAY B25

ASA# 2850521

Homozygous Polled Red Purebred Simmental Bull
Tattoo: B25 • Birthdate: 2/21/14 • DLF
Adj. BW: 77 lbs • Adj. WW: 877 lbs • Adj. YW: 1469 lbs • ADG: 3.8 • WDA: 3.9 • SC: 37.5
Owned by: Roger Kenner

SIRE: **BCLR SHAMWOW W611**
 — WS BEEF MAKER R13
 — BCLR MISS SHANIA S611
 — LFE RED RIDGE 809W
 DAM: **KS ZIZI Z680**
 — KS TEGAN T885

EPDs	
CE	15
BW	-1.6
WW	82
YW	126
MCE	9
MM	27
MW	68
ADG	0.276
CW	42.1
YG	-0.20
MAR	0.14
BF	-0.03
REA	0.76
STAY	
DOC	13.3
API	141
TI	81

- Ranks #3 for Adj. WW and #7 for Adj. YW among Purebred bulls in the sale.
- Dam is first calf heifer. Same cow family as lot 116.



Lot 64

65 KS MR SHAMWOW B40

ASA# 2850545

Homozygous Polled Red Purebred Simmental Bull
Tattoo: B40 • Birthdate: 2/19/14 • DLF
Adj. BW: 86 lbs • Adj. WW: 805 lbs • Adj. YW: 1303 lbs • ADG: 3.2 • WDA: 3.5 • SC: 40.4
Owned by: Roger Kenner

SIRE: **BCLR SHAMWOW W611**
 — WS BEEF MAKER R13
 — BCLR MISS SHANIA S611
 — WS OXFORD X41
 DAM: **KS MISS OXFORD Z849**
 — KS WENDELLE W674

EPDs	
CE	13
BW	0.5
WW	80
YW	116
MCE	9
MM	24
MW	64
ADG	0.224
CW	39.0
YG	-0.29
MAR	0.57
BF	-0.08
REA	0.60
STAY	
DOC	12.8
API	154
TI	87

- Dam is first calf heifer.



Lot 65

66 KS OFFSIDE B832

ASA# 2850733

Homozygous Polled Red Purebred Simmental Bull
Tattoo: B832 • Birthdate: 3/6/14 • DLF
Adj. BW: 94 lbs • Adj. WW: 818 lbs • Adj. YW: 1308 lbs • ADG: 3.1 • WDA: 3.7 • SC: 37.3
Owned by: Roger Kenner

SIRE: **BCLR SHAMWOW W611**
 — WS BEEF MAKER R13
 — BCLR MISS SHANIA S611
 — LFE RED NORTHERN 376T
 DAM: **KS WILDA W496**
 — KS REBA R271

EPDs	
CE	8
BW	3.6
WW	82
YW	118
MCE	8
MM	18
MW	59
ADG	0.228
CW	45.0
YG	-0.19
MAR	0.27
BF	-0.05
REA	0.60
STAY	
DOC	12.9
API	118
TI	75

- Maternal sister sold to Ethan Stangeland, Glenfield, ND, in 2014.



Lot 66

KENNER SIMMENTAL RANCH

Red Purebred Simmental Bulls

67 KS MR SHAMWOW B368

ASA# 2850560

Polled Red Purebred Simmental Bull
Tattoo: B368 • Birthdate: 4/3/14 • DLF
Adj. BW: 97 lbs • Adj. WW: 822 lbs • Adj. YW: 1436 lbs • ADG: 3.9 • WDA: 4.1 • SC: 40.3
Owned by: Roger Kenner

SIRE: **WS BEEF MAKER R13**
BCLR SHAMWOW W611
BCLR MISS SHANIA S611
LRS RED REALITY 33J
DAM: **KS HALEY N826**
TNT MISS REBA F72

EPDs		CW 58.7
CE	10	YG -0.26
BW	3.1	MAR 0.31
WW	91	BF -0.08
YW	142	REA 0.84
MCE	5	STAY
MM	15	DOC 11.8
MW	61	API 125
ADG	0.318	TI 84

- Ranks #6 for WDA among the Purebred bulls in the sale. Ranks in the top 1% among Purebreds for ADG EPD.
- Maternal brother sold in 2013 to Sutherland Farms of Stevensville, MT.

68 KS MR SHAMWOW B853

ASA# 2850745

Homozygous Polled Red Purebred Simmental Bull
Tattoo: B853 • Birthdate: 3/20/14 • DLF • ET
Adj. BW: 90 lbs • Adj. WW: 755 lbs • Adj. YW: 1293 lbs • ADG: 3.4 • WDA: 3.7 • SC: 37.6
Owned by: Roger Kenner

SIRE: **WS BEEF MAKER R13**
BCLR SHAMWOW W611
BCLR MISS SHANIA S611
TNT TONNER N374
DAM: **BCLR MISS REBECCA R505**
SHOESTRING KMICKS K320

EPDs		CW 40.6
CE	9	YG -0.18
BW	2.0	MAR 0.24
WW	78	BF -0.03
YW	115	REA 0.72
MCE	8	STAY
MM	24	DOC 9.8
MW	63	API 122
ADG	0.231	TI 75

- ET siblings are lots 4, 5 & 98, & 111.

69 KS MR SHAMWOW B922

ASA# 2850794

Homozygous Polled Red Purebred Simmental Bull
Tattoo: B922 • Birthdate: 2/23/14 • DLF
Adj. BW: 86 lbs • Adj. WW: 722 lbs • Adj. YW: 1284 lbs • ADG: 3.6 • WDA: 3.5 • SC: 39.1
Owned by: Erika Kenner

SIRE: **WS BEEF MAKER R13**
BCLR SHAMWOW W611
BCLR MISS SHANIA S611
TNT GUNNER N208
DAM: **KS MANDY X787**
PSR MISS B MAKER U816

EPDs		CW 36.1
CE	13	YG -0.21
BW	0.8	MAR 0.28
WW	76	BF -0.06
YW	110	REA 0.54
MCE	9	STAY
MM	23	DOC 9.4
MW	61	API 138
ADG	0.212	TI 77

- Same cow family as lot 79.

70 KS MR SHAMWOW B943

ASA# 2850808

Homozygous Polled Red Purebred Simmental Bull
Tattoo: B943 • Birthdate: 3/6/14 • DLF
Adj. BW: 98 lbs • Adj. WW: 845 lbs • Adj. YW: 1319 lbs • ADG: 3.0 • WDA: 3.7 • SC: 40.3
Owned by: Roger Kenner

SIRE: **WS BEEF MAKER R13**
BCLR SHAMWOW W611
BCLR MISS SHANIA S611
MRL HURRICANE 27R
DAM: **KS MISS YVONNE Y229**
KS DEMMI M978

EPDs		CW 44.8
CE	10	YG -0.08
BW	3.0	MAR 0.54
WW	82	BF -0.04
YW	119	REA 0.37
MCE	4	STAY
MM	21	DOC 11.3
MW	62	API 132
ADG	0.237	TI 83

- Ranks #8 for Adj. WW among the Purebred bulls in the sale.



71 KS FULL PRESS B954

ASA# 2850817

Homozygous Polled Red Purebred Simmental Bull
Tattoo: B954 • Birthdate: 4/2/14 • DLF
Adj. BW: 95 lbs • Adj. WW: 886 lbs • Adj. YW: 1526 lbs • ADG: 4.1 • WDA: 4.3 • SC: 39.2
Owned by: Roger Kenner

SIRE: **WS BEEF MAKER R13**
BCLR SHAMWOW W611
BCLR MISS SHANIA S611
KS SATURN U390
DAM: **KS MISS YANNA Y481**
RIV RED BRIGADIA 969J

EPDs		CW 58.4
CE	10	YG -0.18
BW	2.8	MAR 0.30
WW	92	BF -0.08
YW	143	REA 0.58
MCE	10	STAY
MM	27	DOC 12.8
MW	73	API 132
ADG	0.316	TI 85

- Ranks #2 for Adj. WW, #2 for Adj. YW and #3 for WDA among the Purebred bulls in the sale. Ranks in the top 1% among Purebreds for ADG EPD.
- Will hopefully have GGP-LD DNA test done by sale day.

72 KS MR SHAMWOW B960

ASA# 2850823

Homozygous Polled Red Purebred Simmental Bull
Tattoo: B960 • Birthdate: 3/7/14 • DLF
Adj. BW: 90 lbs • Adj. WW: 818 lbs • Adj. YW: 1366 lbs • ADG: 3.5 • WDA: 3.8 • SC: 36.4
Owned by: Erika Kenner

SIRE: **WS BEEF MAKER R13**
BCLR SHAMWOW W611
BCLR MISS SHANIA S611
KS ATOMIC W506
DAM: **KS MISS YANNAH Y581**
KS STEPHANIE S285

EPDs		CW 43.4
CE	12	YG -0.26
BW	1.5	MAR 0.31
WW	82	BF -0.06
YW	121	REA 0.75
MCE	8	STAY
MM	26	DOC 11.3
MW	67	API 135
ADG	0.244	TI 81

- Maternal great-granddam is the KS Shania cow.
- KS Atomic sold in 2010's sale to John Haman, Towner, ND.

73 KS MR SHAMWOW B3004

ASA# 2850862

Homozygous Polled Red Purebred Simmental Bull
Tattoo: B3004 • Birthdate: 3/30/14 • DLF • ET
Adj. BW: 114 lbs • Adj. WW: 831 lbs • Adj. YW: 1428 lbs • ADG: 3.8 • WDA: 4.1 • SC: 39.2
Owned by: Roger Kenner

SIRE: **WS BEEF MAKER R13**
BCLR SHAMWOW W611
BCLR MISS SHANIA S611
ELLINGSON BLACKPERFECTOR
DAM: **KS DEMMI M978**
KS SHANIA H871

EPDs		CW 47.9
CE	10	YG -0.16
BW	2.0	MAR 0.50
WW	79	BF -0.02
YW	126	REA 0.80
MCE	6	STAY
MM	24	DOC 9.6
MW	63	API 136
ADG	0.294	TI 83

- Ranks #5 for WDA among the Purebred bulls in the sale. Ranks in the top 1% among Purebreds for ADG EPD.
- Full ET sibling is lot 74. Another one of the many by KS Demmi.

KENNER SIMMENTAL RANCH

Red Purebred Simmental Bulls

74 KS MR SHAMWOW B3015

ASA# 2850882

Homozygous Polled Red Purebred Simmental Bull
 Tattoo: B3015 • Birthdate: 3/28/14 • DLF • ET
 Adj. BW: 83 lbs • Adj. WW: 768 lbs • Adj. YW: 1327 lbs • ADG: 3.5 • WDA: 3.8 • SC: 39.5
 Owned by: Roger Kenner

SIRE: **BCLR SHAMWOW W611**
 — WS BEEF MAKER R13
 — BCLR MISS SHANIA S611
 — ELLINGSON BLACKPERFECTOR
 DAM: **KS DEMMI M978**
 — KS SHANIA H871

EPDs	CW 44.8
CE 10	YG -0.11
BW 2.4	MAR 0.59
WW 74	BF -0.02
YW 120	REA 0.63
MCE 6	STAY
MM 25	DOC 9.6
MW 62	API 136
ADG 0.283	TI 82



KS Demmi M978 - Dam of Lot 74

• Full ET sibling is lot 73. Another one of the many by KS Demmi.



3D Red Power 150Z - Sire of Lots 75-81

3D Red Power 150Z

Non-diluted Red Homozygous Polled

We purchased Red Power with Bouchard Livestock in 2013 from 3D Simmentals in Lumsden, SK. Performance is his specialty, ranking in the top 1% of the breed for WW & YW! He puts thick tops, big butts and frame into his progeny. His disposition is excellent, in fact his sons could be labeled as too tame. We did not have any problems calving him on cows. He has 12 sons in this sale and you can expect a lot next year. If you need extra performance in your calves, a Red Power son is the way to go!

75 BGL TAILBACK B146B

ASA# 2850926

Homozygous Polled Red Purebred Simmental Bull
 Tattoo: B146B • Birthdate: 3/2/14 • DLF
 Adj. BW: 99 lbs • Adj. WW: 785 lbs • Adj. YW: 1416 lbs • ADG: 4.0 • WDA: 4.0 • SC: 36.1
 Owned by: Leapaltd Simmentals

SIRE: **3D RED POWER 150Z**
 — LFEBISS BLACKADVANCE426U
 — CROSSROAD RAMONA 375R
 — THSF FREEDOM 300N
 DAM: **BGL UMEKO U131B**
 — BGL RACHEL S72B

EPDs	CW 53.4
CE 4	YG -0.24
BW 4.7	MAR -0.18
WW 86	BF -0.03
YW 130	REA 1.06
MCE 9	STAY 19.6
MM 17	DOC 11.9
MW 60	API 100
ADG 0.271	TI 68



Lot 75

76 KS SAFETY B576

ASA# 2850619

Homozygous Polled Red Purebred Simmental Bull
 Tattoo: B576 • Birthdate: 2/22/14 • DLF
 Adj. BW: 100 lbs • Adj. WW: 833 lbs • Adj. YW: 1311 lbs • ADG: 3.0 • WDA: 3.7 • SC: 35.0
 Owned by: Erika Kenner

SIRE: **3D RED POWER 150Z**
 — LFEBISS BLACKADVANCE426U
 — CROSSROAD RAMONA 375R
 — WINCHESTER HR P8315
 DAM: **KS DARCI S260**
 — KS MAREEN M630

EPDs	CW 38.3
CE 9	YG -0.36
BW 3.2	MAR -0.17
WW 77	BF -0.09
YW 108	REA 0.78
MCE 12	STAY 18.7
MM 23	DOC 8.2
MW 61	API 103
ADG 0.196	TI 66



Lot 76



KENNER SIMMENTAL RANCH

Red Purebred Simmental Bulls

RED PUREBRED BULLS



Lot 77



Lot 78

79 KS MR RED POWER B787

ASA# 2850706

Homozygous Polled Red Purebred Simmental Bull
Tattoo: B787 • Birthdate: 3/11/14 • DLF
Adj. BW: 95 lbs • Adj. WW: 802 lbs • Adj. YW: 1397 lbs • ADG: 3.8 • WDA: 4.0 • SC: 39.1
Owned by: Erika Kenner

SIRE: **3D RED POWER 150Z**
 ┌── LFEISS BLACKADVANCE426U
 └── CROSSROAD RAMONA 375R
 ┌── WS BEEF MAKER R13
 DAM: **PSR MISS B MAKER U816**
 └── MISS PELTON N357

EPDs		CW
CE	5	53.3
BW	4.6	YG -0.22
WW	89	MAR -0.06
YW	130	BF -0.04
MCE	9	REA 0.92
MM	19	STAY 18.9
MW	63	DDC 8.9
ADG	0.256	API 107
		TI 73

• Same cow family as lot 69.



KS Ariela U432 - Dam of Lot 81

77 KS CORNERBACK B593

ASA# 2850625

Homozygous Polled Red Purebred Simmental Bull
Tattoo: B593 • Birthdate: 3/2/14 • DLF
Adj. BW: 95 lbs • Adj. WW: 862 lbs • Adj. YW: 1409 lbs • ADG: 3.4 • WDA: 4.0 • SC: 35.6
Owned by: Erika Kenner

SIRE: **3D RED POWER 150Z**
 ┌── LFEISS BLACKADVANCE426U
 └── CROSSROAD RAMONA 375R
 ┌── CNS DREAM ON L186
 DAM: **KS MISS DREAM ON S402**
 └── BROOKS PERFECT STROKE

EPDs		CW
CE	7	52.6
BW	4.6	YG -0.19
WW	90	MAR 0.04
YW	129	BF -0.04
MCE	9	REA 0.80
MM	15	STAY 22.3
MW	60	DDC 10.9
ADG	0.247	API 121
		TI 75

• Ranks #4 for Adj. WW and ties #10 for WDA among the Purebred bulls in the sale.
 • Maternal sister is lot 165. Same cow family as heifer lot 156.

78 KS BLITZ B760

ASA# 2850697

Homozygous Polled Red Purebred Simmental Bull
Tattoo: B760 • Birthdate: 3/6/14 • DLF
Adj. BW: 83 lbs • Adj. WW: 757 lbs • Adj. YW: 1302 lbs • ADG: 3.4 • WDA: 3.7 • SC: 35.8
Owned by: Roger Kenner

SIRE: **3D RED POWER 150Z**
 ┌── LFEISS BLACKADVANCE426U
 └── CROSSROAD RAMONA 375R
 ┌── THSF FREEDOM 300N
 DAM: **KS URIAH UY602**
 └── KS JOANN S446

EPDs		CW
CE	9	35.8
BW	0.8	YG -0.24
WW	73	MAR -0.21
YW	109	BF -0.03
MCE	11	REA 0.81
MM	18	STAY 19.1
MW	55	DDC 12.0
ADG	0.228	API 105
		TI 65

80 KS MR RED POWER B864

ASA# 2850752

Homozygous Polled Red Purebred Simmental Bull
Tattoo: B864 • Birthdate: 3/30/14 • DLF
Adj. BW: 86 lbs • Adj. WW: 788 lbs • Adj. YW: 1377 lbs • ADG: 3.7 • WDA: 3.9 • SC: 38.2
Owned by: Erika Kenner

SIRE: **3D RED POWER 150Z**
 ┌── LFEISS BLACKADVANCE426U
 └── CROSSROAD RAMONA 375R
 ┌── ACS RED KNIGHT 715T
 DAM: **KS KASSIDY X69**
 └── KS ARIELA U432

EPDs		CW
CE	9	43.1
BW	2.2	YG -0.13
WW	77	MAR -0.01
YW	118	BF -0.04
MCE	9	REA 0.53
MM	27	STAY 18.9
MW	66	DDC 9.1
ADG	0.256	API 115
		TI 71

• Same cow family as lots 6, 13, 26, 72, 81, 106, 117 & 118 and the Demmi progeny.
 • Granddam is dam of lot 81.

81 KS MR RED POWER B788

ASA# 2850707

Homozygous Polled Red Purebred Simmental Bull
Tattoo: B788 • Birthdate: 3/26/14 • DLF
Adj. BW: 94 lbs • Adj. WW: 836 lbs • Adj. YW: 1251 lbs • ADG: 2.6 • WDA: 3.7 • SC: 35.4
Owned by: Erika Kenner

SIRE: **3D RED POWER 150Z**
 ┌── LFEISS BLACKADVANCE426U
 └── CROSSROAD RAMONA 375R
 ┌── TNT GUNNER N208
 DAM: **KS ARIELA U432**
 └── KS SHANIA H871

EPDs		CW
CE	7	36.1
BW	3.7	YG -0.23
WW	76	MAR -0.10
YW	103	BF -0.05
MCE	9	REA 0.68
MM	24	STAY 16.6
MW	62	DDC 9.3
ADG	0.172	API 98
		TI 65

• Dam sold to Michelle & Larry Tourdot of Wisconsin at the 2008 ND State Sale.
 • Dam is granddam of lot 80. Dam is maternal sister to KS Demmi – our influential donor cow.

KENNER SIMMENTAL RANCH

Red Purebred Simmental Bulls

82 KS MR RED RIDGE B022

ASA# 2850914

Homozygous Polled Red Purebred Simmental Bull
Tattoo: B022 • Birthdate: 3/24/14 • DLF • ET
Adj. BW: 115 lbs • Adj. WW: 736 lbs • Adj. YW: 1293 lbs • ADG: 3.5 • WDA: 3.7 • SC: 36.3
Owned by: Roger Kenner

SIRE: **LFE RED RIDGE 809W**
 LFE MR LEWIS 462P
 LFE KIRBIE 217N
 DAM: **TNT MISS S47**
 HART EXTRA EFFORT G289
 TNT MISS APRIL N134

EPDs	
CW	36.3
CE 2	YG -0.28
BW 4.5	MAR -0.24
WW 70	BF -0.07
YW 101	REA 0.66
MCE 9	STAY 21.3
MM 23	DOC 11.9
MW 58	API 90
ADG 0.195	TI 57

• ET siblings are lots 59-62, 83-84, 92, 119 & 169.



LFE Red Ridge 809W - Sire of Lots 82-85

83 KS MR RED RIDGE B481

ASA# 2850582

Homozygous Polled Red Purebred Simmental Bull
Tattoo: B481 • Birthdate: 3/19/14 • DLF • ET
Adj. BW: 93 lbs • Adj. WW: 770 lbs • Adj. YW: 1304 lbs • ADG: 3.4 • WDA: 3.7 • SC: 35.0
Owned by: Roger Kenner

SIRE: **LFE RED RIDGE 809W**
 LFE MR LEWIS 462P
 LFE KIRBIE 217N
 DAM: **TNT MISS S47**
 HART EXTRA EFFORT G289
 TNT MISS APRIL N134

EPDs	
CW	36.3
CE 2	YG -0.31
BW 4.5	MAR -0.16
WW 70	BF -0.09
YW 101	REA 0.58
MCE 9	STAY 21.3
MM 23	DOC 11.9
MW 58	API 95
ADG 0.195	TI 59



TNT Miss S47 - Dam of Lots 82-84

84 KS MR RED RIDGE B566

ASA# 2850916

Homozygous Polled Red Purebred Simmental Bull
Tattoo: B566 • Birthdate: 3/21/14 • DLF • ET
Adj. BW: 102 lbs • Adj. WW: 800 lbs • Adj. YW: 1363 lbs • ADG: 3.6 • WDA: 3.9 • SC: 37.1
Owned by: Roger Kenner

SIRE: **LFE RED RIDGE 809W**
 LFE MR LEWIS 462P
 LFE KIRBIE 217N
 DAM: **TNT MISS S47**
 HART EXTRA EFFORT G289
 TNT MISS APRIL N134

EPDs	
CW	36.3
CE 2	YG -0.17
BW 4.5	MAR -0.01
WW 70	BF -0.04
YW 101	REA 0.57
MCE 9	STAY 21.3
MM 23	DOC 11.9
MW 58	API 102
ADG 0.195	TI 62



Lot 77

85 BGL MR RED RIDGE B153B

ASA# 2850930

Polled Red Purebred Simmental Bull
Tattoo: B153B • Birthdate: 3/15/14 • DLF
Adj. BW: 96 lbs • Adj. WW: 765 lbs • Adj. YW: 1259 lbs • ADG: 3.1 • WDA: 3.6 • SC: 35.8
Owned by: Leapaldt Simmentals

SIRE: **LFE RED RIDGE 809W**
 LFE MR LEWIS 462P
 LFE KIRBIE 217N
 DAM: **BGL WENDY W121B**
 LFE RED NORTHERN 376T
 BGL MORGAN 55B

EPDs	
CW	28.0
CE 4	YG -0.35
BW 3.5	MAR -0.15
WW 64	BF -0.08
YW 89	REA 0.66
MCE 10	STAY 18.9
MM 24	DOC 13.4
MW 56	API 92
ADG 0.161	TI 57

• Maternal sister is lot 161.

Bryan and his daughter, Morgan, are able to enjoy riding horse together in the summer occasionally. Morgan is a graphic designer and works at Scheel's in Fargo in Display & Design, she is getting married in September.



KENNER SIMMENTAL RANCH

Red Purebred Simmental Bulls

86 KS MR RED RIDGE B598

ASA# 2850627

Homozygous Polled Red Purebred Simmental Bull
Tattoo: B598 • Birthdate: 3/19/14 • DLF
Adj. BW: 100 lbs • Adj. WW: 837 lbs • Adj. YW: 1404 lbs • ADG: 3.6 • WDA: 4.0 • SC: 37.5
Owned by: Erika Kenner

SIRE: LFE MR LEWIS 462P
LFE RED RIDGE 809W
LFE KIRBIE 217N
KS BRAVADO P68
DAM: KS BRANDY S424
KS MANDY P236

EPDs	
CW	48.0
CE	6
BW	4.7
WW	81
YW	120
MCE	11
MM	23
MW	64
ADG	0.246
YG	-0.35
MAR	-0.08
BF	-0.10
REA	0.77
STAY	20.2
DOC	13.9
API	108
TI	69

- Ranks #9 for WDA among the Purebred bulls in the sale.
- Same cow family as lot 113.

87 KS MR RED RIDGE B654

ASA# 2850651

Scurred Red Purebred Simmental Bull
Tattoo: B654 • Birthdate: 3/22/14 • DLF
Adj. BW: 77 lbs • Adj. WW: 696 lbs • Adj. YW: 1116 lbs • ADG: 2.6 • WDA: 3.2 • SC: 35.2
Owned by: Roger Kenner

SIRE: LFE MR LEWIS 462P
LFE RED RIDGE 809W
LFE KIRBIE 217N
KS BRAVADO P68
DAM: KS TARA T349
TRAX MISS P499

EPDs	
CW	8.4
CE	11
BW	-0.2
WW	51
YW	66
MCE	13
MM	27
MW	52
ADG	0.094
YG	-0.48
MAR	-0.07
BF	-0.10
REA	0.69
STAY	19.0
DOC	12.9
API	108
TI	58

- Same cow family as lots 8, 116 & 171.

88 KS RED RIDGE B895

ASA# 2850777

Heterozygous Polled Red Purebred Simmental Bull
Tattoo: B895 • Birthdate: 3/20/14 • DLF
Adj. BW: 100 lbs • Adj. WW: 851 lbs • Adj. YW: 1417 lbs • ADG: 3.6 • WDA: 4.0 • SC: 38.1
Owned by: Roger Kenner

SIRE: LFE MR LEWIS 462P
LFE RED RIDGE 809W
LFE KIRBIE 217N
KS SATURN U390
DAM: KS MARA X476
KS ROCHELLE R91

EPDs	
CW	47.7
CE	3
BW	4.1
WW	80
YW	121
MCE	12
MM	25
MW	66
ADG	0.255
YG	-0.35
MAR	0.07
BF	-0.11
REA	0.71
STAY	20.3
DOC	13.7
API	114
TI	73

- Ranks #6 for Adj. WW among the Purebred bulls in the sale.



89 KS MR RED RIDGE B736

ASA# 2850685

Homozygous Polled Red Purebred Simmental Bull
Tattoo: B736 • Birthdate: 3/6/14 • DLF
Adj. BW: 93 lbs • Adj. WW: 794 lbs • Adj. YW: 1289 lbs • ADG: 3.1 • WDA: 3.7 • SC: 33.3
Owned by: Roger Kenner

SIRE: LFE MR LEWIS 462P
LFE RED RIDGE 809W
LFE KIRBIE 217N
KS RED STONE R236
DAM: KS UBERTA U490
KS MISS FREEDOM R245

EPDs	
CW	28.9
CE	7
BW	2.4
WW	69
YW	94
MCE	10
MM	19
MW	53
ADG	0.158
YG	-0.41
MAR	-0.14
BF	-0.11
REA	0.66
STAY	20.3
DOC	12.1
API	104
TI	62

- Full sister sells as lot 174. Same cow family as lot 115.

90 KS MR RED RIDGE B958

ASA# 2850821

Homozygous Polled Red Purebred Simmental Bull
Tattoo: B958 • Birthdate: 3/13/14 • DLF
Adj. BW: 91 lbs • Adj. WW: 775 lbs • Adj. YW: 1389 lbs • ADG: 3.9 • WDA: 3.8 • SC: 37.2
Owned by: Erika Kenner

SIRE: LFE MR LEWIS 462P
LFE RED RIDGE 809W
LFE KIRBIE 217N
KS CAPTN JACK T518
DAM: KS MISS YALENA Y525
KS RANDI R989

EPDs	
CW	44.2
CE	5
BW	3.3
WW	79
YW	117
MCE	10
MM	23
MW	62
ADG	0.241
YG	-0.47
MAR	0.03
BF	-0.09
REA	1.22
STAY	18.9
DOC	10.9
API	112
TI	72

- Same cow family as lot 97.

91 KS MR RED RIDGE B968

ASA# 2850830

Homozygous Polled Red Purebred Simmental Bull
Tattoo: B968 • Birthdate: 3/6/14 • DLF
Adj. BW: 108 lbs • Adj. WW: 823 lbs • Adj. YW: 1344 lbs • ADG: 3.3 • WDA: 3.7 • SC: 35.8
Owned by: Roger Kenner

SIRE: LFE MR LEWIS 462P
LFE RED RIDGE 809W
LFE KIRBIE 217N
HOOKS SHEAR FORCE 38K
DAM: KS MISS YANINNA Y644
KS MISS BLIZZARD T242

EPDs	
CW	42.5
CE	5
BW	5.4
WW	79
YW	110
MCE	8
MM	24
MW	63
ADG	0.194
YG	-0.19
MAR	0.31
BF	-0.04
REA	0.68
STAY	18.0
DOC	13.9
API	119
TI	75



KENNER SIMMENTAL RANCH

Red Purebred Simmental Bulls

92 KS MR ALL IN B3024

ASA# 2850890

Homozygous Polled Red Purebred Simmental Bull
Tattoo: B3024 • Birthdate: 4/1/14 • DLF • ET
Adj. BW: 107 lbs • Adj. WW: 748 lbs • Adj. YW: 1302 lbs • ADG: 3.5 • WDA: 3.7 • SC: 36.2
Owned by: Roger Kenner

SIRE: **WS ALL IN W111**
 — HSF HIGH ROLLER 12T
 — WS MISS TRACY T50
 DAM: **TNT MISS S47**
 — HART EXTRA EFFORT G289
 — TNT MISS APRIL N134

EPDs	
CW	35.2
CE	10
YG	-0.21
BW	2.1
MAR	-0.05
WW	75
BF	-0.05
YW	106
REA	0.59
MCE	14
STAY	25.3
MM	32
DOC	10.3
MW	69
API	125
ADG	0.189
TI	70



• ET siblings are lots 59-62, 82-84, 119 & 169.



WS All In W111 - Sire of Lots 92-94

93 KS MR ALL IN B992

ASA# 2850851

Homozygous Polled Red Purebred Simmental Bull
Tattoo: B992 • Birthdate: 2/21/14 • DLF
Adj. BW: 82 lbs • Adj. WW: 803 lbs • Adj. YW: 1227 lbs • ADG: 2.7 • WDA: 3.3 • SC: 35.0
Owned by: Roger Kenner

SIRE: **WS ALL IN W111**
 — HSF HIGH ROLLER 12T
 — WS MISS TRACY T50
 DAM: **KS ZARA Z287**
 — HOOKS SHEAR FORCE 38K
 — KS JENNIFER M86

EPDs	
CW	23.7
CE	16
YG	-0.26
BW	-0.1
MAR	0.32
WW	71
BF	-0.05
YW	92
REA	0.59
MCE	12
STAY	19.6
MM	36
DOC	9.6
MW	71
API	143
ADG	0.133
TI	80

• Dam is first calf heifer

94 KS MR ALL IN B6681

ASA# 2850654

Heterozygous Polled Red Purebred Simmental Bull
Tattoo: B6681 • Birthdate: 2/19/14 • DLF • Twin - Opp
Adj. BW: 71 lbs • Adj. WW: 700 lbs • Adj. YW: 1203 lbs • ADG: 3.2 • WDA: 3.3 • SC: 36.9
Owned by: Erika Kenner

SIRE: **WS ALL IN W111**
 — HSF HIGH ROLLER 12T
 — WS MISS TRACY T50
 DAM: **KS MISS REMINGTON T485**
 — REMINGTON RED LABEL HR
 — PSR CRACKIN GOOD 184R

EPDs	
CW	38.0
CE	12
YG	-0.28
BW	2.6
MAR	0.02
WW	79
BF	-0.05
YW	109
REA	0.84
MCE	11
STAY	27.4
MM	33
DOC	7.3
MW	73
API	136
ADG	0.191
TI	74

95 KS ZONE B390

ASA# 2850565

Heterozygous Polled Red Purebred Simmental Bull
Tattoo: B390 • Birthdate: 2/25/14 • DLF
Adj. BW: 91 lbs • Adj. WW: 746 lbs • Adj. YW: 1388 lbs • ADG: 4.0 • WDA: 3.8 • SC: 38.7
Owned by: Roger Kenner

SIRE: **HARVIE JDFWALLBANGER111X**
 — SHS ENTICER P1B
 — JDF PEPSI 61U
 DAM: **KS TANISHA P9**
 — BOZ REDCOAT
 — BOZ MISS G649

EPDs	
CW	48.6
CE	6
YG	-0.18
BW	2.6
MAR	-0.14
WW	76
BF	-0.07
YW	125
REA	0.48
MCE	12
STAY	18.4
MM	26
DOC	10.3
MW	64
API	103
ADG	0.310
TI	67



• Dam has had 4 bulls - all made the bull sale - one was KS Saturn that sold to Bichler Simmentals. Several daughters in the herd. Ranks in the top 1% among Purebreds for ADG EPD.
 • Same cow family as heifer lot 178.
 • Other Wallbanger sons sell as lots 6-9.



Lot 95

96 KS MR WALLBANGER B479

ASA# 2850581

Heterozygous Polled Red Purebred Simmental Bull
Tattoo: B479 • Birthdate: 2/14/14 • DLF • Twin - Opp
Adj. BW: 73 lbs • Adj. WW: 736 lbs • Adj. YW: 1249 lbs • ADG: 3.2 • WDA: 3.5 • SC: 37.6
Owned by: Roger Kenner

SIRE: **HARVIE JDFWALLBANGER111X**
 — SHS ENTICER P1B
 — JDF PEPSI 61U
 DAM: **KS ROSEANNE R114**
 — THSF FREEDOM 300N
 — KS CONNIE M888

EPDs	
CW	46.4
CE	5
YG	-0.33
BW	2.8
MAR	-0.14
WW	77
BF	-0.08
YW	122
REA	0.82
MCE	12
STAY	19.6
MM	19
DOC	10.8
MW	57
API	104
ADG	0.279
TI	67



• Same cow family as lot 7.
 • Other Wallbanger sons sell as lots 6-9.



Lot 96

KENNER SIMMENTAL RANCH

Red Purebred Simmental Bulls

RED PUREBRED BULLS



97 KS MR CURRENCY B739

ASA# 2850686

Heterozygous Polled Red Purebred Simmental Bull
Tattoo: B739 • Birthdate: 3/9/14 • DLF
Adj. BW: 99 lbs • Adj. WW: 828 lbs • Adj. YW: 1349 lbs • ADG: 3.3 • WDA: 3.9 • SC: 37.5
Owned by: Erika Kenner

SIRE: TNT TANKER U263
LFE KATARINA 604N
DAM: KS THE GODFATHER S127
KS URIELA U525
KS RANDI R989

EPDs	CW 41.9
CE 4	YG -0.37
BW 4.1	MAR -0.09
WW 74	BF -0.10
YW 111	REA 0.80
MCE 12	STAY 19.0
MM 21	DDC 7.1
MW 58	API 101
ADG 0.230	TI 65

• Same cow family as lot 90.



98 KS MR STUBBY B858

ASA# 2850747

Homozygous Polled Red Purebred Simmental Bull
Tattoo: B858 • Birthdate: 3/18/14 • DLF • ET
Adj. BW: 103 lbs • Adj. WW: 831 lbs • Adj. YW: 1311 lbs • ADG: 3.0 • WDA: 3.8 • SC: 38.0
Owned by: Erika Kenner

SIRE: R PLUS BLACKEDGE
LFE BS LEWIS 322U (STUBBY)
LFE BS MS ARNOLD 135S
DAM: TNT TONNER N374
BCLR MISS REBECCA R505
SHOESTRING KMICKS K320

EPDs	CW 29.9
CE 7	YG -0.26
BW 4.2	MAR -0.17
WW 67	BF -0.03
YW 91	REA 0.81
MCE 8	STAY 16.5
MM 21	DDC 7.5
MW 55	API 90
ADG 0.151	TI 58

• ET siblings are lots 4, 5 & 68 & 111.

99 KS MR STUBBY B4953

ASA# 2850904

Homozygous Polled Red Purebred Simmental Bull
Tattoo: B4953 • Birthdate: 3/24/14 • DLF • ET
Adj. BW: 112 lbs • Adj. WW: 811 lbs • Adj. YW: 1326 lbs • ADG: 3.2 • WDA: 3.8 • SC: 39.8
Owned by: Roger Kenner

SIRE: R PLUS BLACKEDGE
LFE BS LEWIS 322U (STUBBY)
LFE BS MS ARNOLD 135S
DAM: ELLINGSON BLACKPERFECTOR
KS DEMMI M978
KS SHANIA H871

EPDs	CW 33.9
CE 8	YG -0.23
BW 4.5	MAR -0.03
WW 64	BF -0.04
YW 96	REA 0.69
MCE 6	STAY 15.6
MM 22	DDC 7.3
MW 54	API 97
ADG 0.204	TI 60

• Full ET sib to lot 3 (black bull).

The Beginning of the Development Center – Fall of 2012: This was an alfalfa field. Gary Morlock, Bismarck, did all the dirt work and he is amazing!



KENNER SIMMENTAL RANCH

Red 3/4 SimAngus Bulls

100 KS BASES LOADED B47

ASA# 2850541

Homozygous Polled Red 3/4 Red SimAngus Bull
Tattoo: B47 • Birthdate: 2/16/14 • DLF
Adj. BW: 86 lbs • Adj. WW: 840 lbs • Adj. YW: 1427 lbs • ADG: 3.7 • WDA: 3.9 • SC: 41.9
Owned by: Roger Kenner

SIRE: **BCLR SHAMWOW W611**
 — WS BEEF MAKER R13
 — BCLR MISS SHANIA S611
 DAM: **KS ZASHA Z906**
 — WS ALL IN W111
 — KS SHERRI X627

EPDs	
CW	56.1
YG	-0.17
MAR	0.41
BF	-0.04
REA	0.77
STAY	
DOC	12.8
API	144
TI	90
ADG	0.311

- Ties for #4 for Adj. WW among the SimAngus bulls in the sale.
- Ranks in the 3% among SimAngus for ADG EPD.
- Dam is first calf heifer and is now a donor for us.



Lot 100

101 KS STRIKE OUT B711

ASA# 2850673

Homozygous Polled Red 5/8 Red SimAngus Bull
Tattoo: B711 • Birthdate: 3/9/14 • DLF
Adj. BW: 107 lbs • Adj. WW: 813 lbs • Adj. YW: 1459 lbs • ADG: 4.1 • WDA: 4.2 • SC: 39.9
Owned by: Erika Kenner

SIRE: **BCLR SHAMWOW W611**
 — WS BEEF MAKER R13
 — BCLR MISS SHANIA S611
 DAM: **KS UVATERA U263**
 — NEO-SHO MILLENIUM 065G
 — KS MORISSA M644

EPDs	
CW	66.0
YG	-0.12
MAR	0.09
BF	-0.07
REA	0.52
STAY	
DOC	13.1
API	107
TI	77
ADG	0.360

- Ranks #7 for Adj. WW, #6 for Adj. YW, and #2 for WDA among the SimAngus bulls in the sale. Ranks in the top 1% among SimAngus for ADG EPD.
- Full brother sold in 2014 to Wes Leapaldt, Woodworth, ND for \$7,500.



Lot 101

102 KS MR RED POWER B388

ASA# 2850564

Polled Red 3/4 Red SimAngus Bull
Tattoo: B388 • Birthdate: 3/3/14 • DLF • Twin
Adj. BW: 67 lbs • Adj. WW: 697 lbs • Adj. YW: 1213 lbs • ADG: 3.3 • WDA: 3.5 • SC: 34.3
Owned by: Roger Kenner

SIRE: **3D RED POWER 150Z**
 — LFEBISS BLACKADVANCE426U
 — CROSSROAD RAMONA 375R
 DAM: **NLC N58**
 — SRS FORTUNE 500
 — G32

EPDs	
CW	43.6
YG	-0.10
MAR	-0.01
BF	-0.04
REA	0.44
STAY	13.1
DOC	11.9
API	101
TI	70
ADG	0.253

- Twin to lot 103. Maternal sib sells as heifer lot 182.
- Purchased dam at Nelson Livestock reduction sale.

103 KS MR RED POWER B3881

ASA# 2850573

Polled Red 3/4 Red SimAngus Bull
Tattoo: B3881 • Birthdate: 3/3/14 • DLF • Twin
Adj. BW: 67 lbs • Adj. WW: 721 lbs • Adj. YW: 1293 lbs • ADG: 3.6 • WDA: 3.7 • SC: 32.8
Owned by: Roger Kenner

SIRE: **3D RED POWER 150Z**
 — LFEBISS BLACKADVANCE426U
 — CROSSROAD RAMONA 375R
 DAM: **NLC N58**
 — SRS FORTUNE 500
 — G32

EPDs	
CW	43.6
YG	-0.10
MAR	-0.01
BF	-0.04
REA	0.44
STAY	13.1
DOC	11.9
API	101
TI	70
ADG	0.253

- Twin to lot 102. Maternal sib sells as heifer lot 182.
- Purchased dam at Nelson Livestock reduction sale.

104 KS MR RED POWER B592

ASA# 2850624

Polled Red 3/4 Red SimAngus Bull
Tattoo: B592 • Birthdate: 2/24/14 • DLF
Adj. BW: 96 lbs • Adj. WW: 730 lbs • Adj. YW: 1263 lbs • ADG: 3.4 • WDA: 3.6 • SC: 35.8
Owned by: Erika Kenner

SIRE: **3D RED POWER 150Z**
 — LFEBISS BLACKADVANCE426U
 — CROSSROAD RAMONA 375R
 DAM: **KS VALERINA S397**
 — BROWN VACATION H7106
 — ANKONY MISS CARMEN P51

EPDs	
CW	39.4
YG	-0.22
MAR	-0.01
BF	-0.05
REA	0.69
STAY	
DOC	10.6
API	89
TI	62
ADG	0.211

Feedbunks: Poured here in 2 days by Double D Bunks out of Nebraska.



KENNER SIMMENTAL RANCH

Red 3/4 SimAngus Bulls

105 KS FIELD GOAL B713

ASA# 2850674

Homozygous Polled Red 3/4 Red SimAngus Bull
Tattoo: B713 • Birthdate: 3/3/14 • DLF
Adj. BW: 85 lbs • Adj. WW: 724 lbs • Adj. YW: 1276 lbs • ADG: 3.5 • WDA: 3.7 • SC: 36.8
Owned by: Roger Kenner

SIRE: **3D RED POWER 150Z**
 — LFEISS BLACKADVANCE426U
 — CROSSROAD RAMONA 375R
 — NEO-SHO MILLENIUM 065G
 DAM: **KS UTA U265**
 — KS CARLATA M68

EPDs	
CE 9	CW 37.7
BW 1.9	YG -0.08
WW 73	MAR -0.17
YW 110	BF -0.01
MCE 11	REA 0.51
MM 17	STAY
MW 54	DDC 12.2
ADG 0.228	API 100
	TI 61



Lot 105

106 KS LINEMAN B837

ASA# 2850739

Homozygous Polled Red 3/4 Red SimAngus Bull
Tattoo: B837 • Birthdate: 2/28/14 • DLF
Adj. BW: 111 lbs • Adj. WW: 844 lbs • Adj. YW: 1414 lbs • ADG: 3.6 • WDA: 4.1 • SC: 35.2
Owned by: Erika Kenner

SIRE: **3D RED POWER 150Z**
 — LFEISS BLACKADVANCE426U
 — CROSSROAD RAMONA 375R
 — LJC MISSION STATEMENTP27
 DAM: **KS WAYLON W534**
 — KS SHANIA H871

EPDs	
CE 3	CW 59.4
BW 6.0	YG -0.05
WW 89	MAR 0.07
YW 136	BF 0.01
MCE 4	REA 0.82
MM 17	STAY
MW 62	DDC 11.4
ADG 0.297	API 84
	TI 70

- Ranks #3 for Adj. WW and #6 for WDA among the SimAngus bulls in the sale. Ranks in the top 5% among SimAngus for ADG EPD.
- Same cow family as lots 6, 13, 26, 72, 80, 81, 106, 117 & 118 and the Demmi progeny.



Lot 107

107 KS SLUGGER B827

ASA# 2850729

Heterozygous Polled Red 3/4 Red SimAngus Bull
Tattoo: B827 • Birthdate: 3/10/14 • DLF
Adj. BW: 105 lbs • Adj. WW: 836 lbs • Adj. YW: 1423 lbs • ADG: 3.7 • WDA: 4.1 • SC: 39.6
Owned by: Roger Kenner

SIRE: **WS ALL IN W111**
 — HSF HIGH ROLLER 12T
 — WS MISS TRACY T50
 — RED FINELINEMULBERRY 26P
 DAM: **KS WYOMING W466**
 — RC RED LIGHT 160P

EPDs	
CE 8	CW 52.7
BW 3.2	YG -0.23
WW 89	MAR 0.19
YW 132	BF -0.06
MCE 11	REA 0.81
MM 28	STAY
MW 72	DDC 11.1
ADG 0.268	API 120
	TI 80

- Ranks #5 for Adj. WW and ties for #5 for WDA among the SimAngus bulls in the sale.
- Maternal sister is lot 142.

Most of the Fall Roundup crew at the end of the trail! Ashton Phillips, Erika, Scott McGarvey, Brady Martz, and Chris Geir. Not pictured: Bryan Leapaldt, Curt Munson, and Dean Wangler. Roger was the official photographer for the day!



KENNER SIMMENTAL RANCH

Red 1/2 SimAngus Bulls

108 KS SHUT OUT B35

ASA# 2850530

Homozygous Polled Red 1/2 Red SimAngus Bull
Tattoo: B35 • Birthdate: 2/26/14 • DLF
Adj. BW: 87 lbs • Adj. WW: 747 lbs • Adj. YW: 1272 lbs • ADG: 3.4 • WDA: 3.4 • SC: 38.1
Owned by: Roger Kenner

SIRE: **HXC CONQUEST 4405P**
 — BECKTON JULIAN GG B571
 — HXC ELLIE MAY MA638
 — BCLR SHAMWOW W611
 DAM: **KS ZERA Z805**
 — KS WENDA W212

EPDs	
CW	25.2
CE	15
YG	-0.17
BW	-1.5
MAR	0.60
WW	63
BF	-0.03
YW	97
REA	0.47
MCE	8
STAY	
MM	26
DOC	12.2
MW	58
API	147
ADG	0.210
TI	78

- Dam is first calf heifer.
- Maternal granddam is a KS Demmi daughter.



Lot 108

109 BGL MR CONQUEST B1688

ASA# 2850949

Homozygous Polled Red 1/2 Red SimAngus Bull
Tattoo: B1688 • Birthdate: 2/27/14 • DLF
Adj. BW: 82 lbs • Adj. WW: 716 lbs • Adj. YW: 1229 lbs • ADG: 3.3 • WDA: 3.3 • SC: 36.1
Owned by: Leapaldt Simmentals

SIRE: **HXC CONQUEST 4405P**
 — BECKTON JULIAN GG B571
 — HXC ELLIE MAY MA638
 — WS BEEF MAKER R13
 DAM: **KS MISS BEEF MAKER Z813**
 — KS WINTER W298

EPDs	
CW	20.7
CE	15
YG	-0.29
BW	-1.5
MAR	0.23
WW	61
BF	-0.07
YW	89
REA	0.45
MCE	7
STAY	
MM	26
DOC	12.7
MW	56
API	126
ADG	0.179
TI	68

- Dam is first calf heifer. Bryan purchased her in our 2014 sale.



KS Miss Beef Maker Z813 - Dam of Lot 109

110 BGL LIGHTS OUT B1698

ASA# 2850950

Homozygous Polled Red 1/2 Red SimAngus Bull
Tattoo: B1698 • Birthdate: 2/24/14 • DLF
Adj. BW: 92 lbs • Adj. WW: 877 lbs • Adj. YW: 1446 lbs • ADG: 3.7 • WDA: 3.9 • SC: 36.5
Owned by: Leapaldt Simmentals

SIRE: **HXC CONQUEST 4405P**
 — BECKTON JULIAN GG B571
 — HXC ELLIE MAY MA638
 — WS OXFORD X41
 DAM: **KS MISS OXFORD Z833**
 — KS WINNIFRED W505

EPDs	
CW	42.1
CE	13
YG	-0.08
BW	-0.3
MAR	0.58
WW	78
BF	-0.02
YW	122
REA	0.48
MCE	10
STAY	
MM	23
DOC	11.6
MW	62
API	149
ADG	0.279
TI	86

- Ranks #1 for Adj. WW and #8 for Adj. YW among the SimAngus bulls in the sale.
- Dam is first calf heifer. Bryan purchased her in our 2014 sale.
- Maternal granddam is a KS Demmi daughter.



Lot 110



KS Miss Oxford Z833 - Dam of Lot 110



Barn building: Gleason Construction from Devils Lake, ND, built 12 barns in 2013.

CMW Manufacturing from St. Onge, SD built the fence. They started late Fall 2013 and finished in December of 2014.



KENNER SIMMENTAL RANCH

Red 1/2 SimAngus Bulls



111 KS MR EPIC B467

ASA# 2850577

Homozygous Polled Red 1/2 Red SimAngus Bull
Tattoo: B467 • Birthdate: 3/25/14 • DLF • ET
Adj. BW: 95 lbs • Adj. WW: 700 lbs • Adj. YW: 1281 lbs • ADG: 3.7 • WDA: 3.7 • SC: 34.4
Owned by: Erika Kenner

SIRE: **BECKTON EPIC R397 K**
 — BECKTON KIT F468 JL
 — TNT TONNER N374
 DAM: **BCLR MISS REBECCA R505**
 — SHOESTRING KMICKS K320

EPDs		CW 39.6
CE 5	YG -0.11	
BW 2.1	MAR 0.20	
WW 72	BF -0.01	
YW 112	REA 0.65	
MCE 5	STAY	
MM 23	DDC 9.9	
MW 59	API 95	
ADG 0.248	TI 68	

• ET siblings are lots 4, 5, 68, & 98.

112 KS MR EPIC B628

ASA# 2850639

Scurred Red 1/2 Red SimAngus Bull
Tattoo: B628 • Birthdate: 2/23/14 • DLF
Adj. BW: 96 lbs • Adj. WW: 787 lbs • Adj. YW: 1412 lbs • ADG: 4.0 • WDA: 4.0 • SC: 40.5
Owned by: Roger Kenner

SIRE: **BECKTON EPIC R397 K**
 — BECKTON KIT F468 JL
 — KBSR EASY MONEY R3
 DAM: **HAAS RANCH T71**
 — HAAS RANCH K169

EPDs		CW 50.5
CE 4	YG 0.04	
BW 3.6	MAR 0.27	
WW 81	BF 0.00	
YW 127	REA 0.39	
MCE 2	STAY	
MM 23	DDC 10.8	
MW 63	API 91	
ADG 0.287	TI 73	

• Ties for #7 for WDA among the SimAngus bulls in the sale.
• Dam is granddam of Lot 180.

113 KS MR EPIC B889

ASA# 2850774

Polled Red 1/2 Red SimAngus Bull
Tattoo: B889 • Birthdate: 2/23/14 • DLF
Adj. BW: 81 lbs • Adj. WW: 696 lbs • Adj. YW: 1170 lbs • ADG: 3.0 • WDA: 3.3 • SC: 35.0
Owned by: Roger Kenner

SIRE: **BECKTON EPIC R397 K**
 — BECKTON KIT F468 JL
 — ACS RED KNIGHT 715T
 DAM: **KS MADAME X424**
 — KS MANDY P236

EPDs		CW 22.5
CE 10	YG -0.11	
BW -0.6	MAR 0.06	
WW 56	BF -0.02	
YW 89	REA 0.36	
MCE 5	STAY	
MM 28	DDC 12.5	
MW 56	API 98	
ADG 0.206	TI 59	

• Maternal brother sold to Keller Broken Heart Ranch in 2014 for \$12,000.
• Same cow family as lot 86.



114 BGL MR HUSTLER B140B

ASA# 2850923

Homozygous Polled Red 1/2 Red SimAngus Bull
Tattoo: B140B • Birthdate: 3/5/14 • DLF
Adj. BW: 83 lbs • Adj. WW: 805 lbs • Adj. YW: 1377 lbs • ADG: 3.7 • WDA: 4.0 • SC: 38.0
Owned by: Leapaldt Simmentals

SIRE: **BECKTON HUSTLER C2 L079**
 — **BECKTON HUSTLER S426 C2**
 — BKT LARKEISA M288 CK
 — KS BRAVADO P68
 DAM: **BGL TRACY T121B**
 — BGL MORGAN 55B

EPDs		CW 41.1
CE 18	YG -0.01	
BW -1.7	MAR 0.04	
WW 78	BF -0.02	
YW 124	REA 0.29	
MCE 13	STAY	
MM 19	DDC 15.8	
MW 58	API 142	
ADG 0.286	TI 74	

• Ties for #7 for WDA among the SimAngus bulls in the sale.



115 KS MR HUSTLER B670

ASA# 2850655

Homozygous Polled Red 1/2 Red SimAngus Bull
Tattoo: B670 • Birthdate: 2/18/14 • DLF
Adj. BW: 77 lbs • Adj. WW: 658 lbs • Adj. YW: 1199 lbs • ADG: 3.5 • WDA: 3.4 • SC: 32.3
Owned by: Roger Kenner

SIRE: **BECKTON HUSTLER C2 L079**
 — **BECKTON HUSTLER S426 C2**
 — BKT LARKEISA M288 CK
 — FR REZULT
 DAM: **KS MISS REZULT T490**
 — KS MISS FREEDOM R245

EPDs		CW 24.4
CE 18	YG -0.10	
BW -2.1	MAR 0.03	
WW 63	BF -0.03	
YW 97	REA 0.27	
MCE 11	STAY	
MM 14	DDC 15.8	
MW 46	API 135	
ADG 0.209	TI 65	

• Same cow family as lots 89 & 174.

KENNER SIMMENTAL RANCH

Red 1/2 SimAngus Bulls

116 KS MR HUSTLER B680

ASA# 2850661

Homozygous Polled Red 1/2 Red SimAngus Bull
Tattoo: B680 • Birthdate: 2/25/14 • DLF
Adj. BW: 67 lbs • Adj. WW: 731 lbs • Adj. YW: 1124 lbs • ADG: 2.5 • WDA: 3.3 • SC: 34.6
Owned by: Roger Kenner

SIRE: **BECKTON HUSTLER C2 L079**
 — BKT LARKEISA M288 CK
 — KS BRAVADO P68
 DAM: **KS TEGAN T885**
 — TRAX MISS P499

EPDs	
CE 22	CW 13.3
BW -4.3	YG -0.18
WW 58	MAR 0.20
YW 84	BF -0.04
MCE 13	REA 0.28
MM 18	STAY
MW 47	DOC 15.3
ADG 0.161	API 160
	TI 69

• Maternal sister is lot 171. Same cow family as lots 8 & 87.



117 KS SHOTGUN B816

ASA# 2850723

Homozygous Polled Red 1/2 Red SimAngus Bull
Tattoo: B816 • Birthdate: 2/26/14 • DLF • Twin
Adj. BW: 76 lbs • Adj. WW: 860 lbs • Adj. YW: 1438 lbs • ADG: 3.7 • WDA: 4.1 • SC: 40.6
Owned by: Erika Kenner

SIRE: **BECKTON HUSTLER C2 L079**
 — BKT LARKEISA M288 CK
 — HOOKS/KS SEQUOIA 35S
 DAM: **KS WINNIE W340**
 — KS SHANIA H871

EPDs	
CE 14	CW 38.0
BW 0.3	YG -0.04
WW 72	MAR 0.49
YW 113	BF -0.01
MCE 7	REA 0.37
MM 17	STAY
MW 53	DOC 15.1
ADG 0.260	API 141
	TI 78

• Ranks #2 for Adj. WW, #9 for Adj. YW, and ties for #5 for WDA among the SimAngus bulls in the sale.
 • Twin to lot 118.
 • Same cow family as lots 6, 13, 26, 72, 80, 81 & 106 and the Demmi progeny.



118 KS TIME OUT B816I

ASA# 2850736

Homozygous Polled Red 1/2 Red SimAngus Bull
Tattoo: B816I • Birthdate: 2/26/14 • DLF • Twin
Adj. BW: 71 lbs • Adj. WW: 752 lbs • Adj. YW: 1322 lbs • ADG: 3.7 • WDA: 3.8 • SC: 38.6
Owned by: Erika Kenner

SIRE: **BECKTON HUSTLER C2 L079**
 — BKT LARKEISA M288 CK
 — HOOKS/KS SEQUOIA 35S
 DAM: **KS WINNIE W340**
 — KS SHANIA H871

EPDs	
CE 15	CW 44.2
BW 1.2	YG -0.04
WW 77	MAR 0.39
YW 122	BF -0.02
MCE 7	REA 0.42
MM 16	STAY
MW 55	DOC 15.1
ADG 0.279	API 138
	TI 78

• Twin to lot 117.
 • Same cow family as lots 6, 13, 26, 72, 80, 81, & 106 and the Demmi progeny.



Ashton moved to Leeds with her horse in May. She is originally from Missouri and loves cows and horses! We are lucky to have her here!

KENNER SIMMENTAL RANCH

Service Sires



CCR Wide Range 9005A ¾ SimAngus
 ASA# 2725666
 Sire: SDS Graduate 006X MGS: HTP SVF In Dew Time
 EPDs: 15 -2.3 67 102 12.5 32 66 API:147 TI: 75
 Homozygous Black Homozygous Polled



GW-WBF Substance 820Y ¾ SimAngus
 ASA# 2605922
 Sire: GW Premium Beef 021TS MGS: GW Mr Maternal 731L
 EPDs: 14 -0.2 65 108 12 21 54 API:157 TI: 80
 Homozygous Black Homozygous Polled



NLC Break Free 72W Purebred Simmental (7/8)
 ASA# 2522023
 Sire: NLC Stetson 36S MGS: NLC Gothic 31G
 EPDs: 17 0.5 75 114 11 15 53 API:143 TI: 73
 Homozygous Black Homozygous Polled



NLC Fast Break 3A Purebred Simmental
 ASA# 2733010
 Sire: NLC Break Free MGS: BF M218 Snake Eyes
 EPDs: 15 -0.5 67 102 11 22 55 API:134 TI: 68
 Homozygous Black Homozygous Polled
Purchased from Nelson Livestock Company, Wibaux, MT in 2014.



Ellingson Identity 9104 Purebred Angus
 ASA# 2755115 AAA# 16413257
 Sire: TC Aberdeen MGS: Wulffs EXT 610G
 EPDs: 25 -4.6 62 109 15 34 65 API:183 TI: 83



Ellingson Durango 2156 Purebred Angus
 ASA# 2722169 AAA# 17426799
 Sire: Sitz Dimension MGS: LT Bandwagon
 EPDs: 16 -3.2 60 114 10 24 55 API:134 TI: 70
Purchased from Ellingson Angus, St. Anthony, ND in 2013. His first sons sell in this sale.



BCLR ShamWow W611 ¾ SimAngus
 ASA# 2508379
 Sire: WS Beef Maker MGS: BFCK Cherokee Cnyn
 EPDs: 14 0.1 88 137 4 25 68 API:153 TI: 94
 Red Homozygous Polled



WS All In W111 Purebred Simmental
 ASA# 2499595
 Sire: HSF High Roller MGS: Hooks Shear Force
 EPDs: 17 0.2 85 118 15 40 83 API:151 TI: 84
 Red Homozygous Polled



HXC Conquest 4405P Purebred Red Angus
 ASA# 2376637 AAR# 975924
 Sire: Beckton Julian GG 8571 MGS: BFCK Cherokee Cnyn
 EPDs: 20 -6.0 61 98 6 27 57 API:144 TI: 74



Pelton HH 265Z Purebred Red Angus
 ASA# 2876603 ARA# 1602707
 Sire: Beckton Halfmann Hustler MGS: Beckton Nebula MD45
 EPDs: 21 -6.9 50 87 3 13 38 API:138 TI: 65
Purchased from Pelton Simmental/Red Angus of Burdett, KS in 2014.

Bred Heifers were ultrasounded by JJ Hovde, DVM on August 12, 2014 and preg checked by Judy Gibbens, DVM on September 29, 2014.

BLACK PUREBRED BREDS

KENNER SIMMENTAL RANCH

Black Purebred Simmental Bred Heifers

119 KS MISS BLK DIAMOND A275

ASA# 2757992

Homozygous Polled Heterozygous Black Purebred Simmental Cow
Tattoo: A275 • Birthdate: 3/5/13 • ET
Adj. BW: 88 lbs • Adj. WW: 516
Owned by: Roger Kenner

SIRE: **KS BLACK DIAMOND W992**
 WHEATLAND BULL 680S
 KS KAYLA J497
 DAM: **TNT MISS S47**
 HART EXTRA EFFORT G289
 TNT MISS APRIL N134

EPDs	
CE 2	CW 37.1
BW 4.2	YG -0.34
WW 66	MAR -0.17
YW 102	BF -0.06
MCE 8	REA 0.93
MM 26	STAY 23.4
MW 59	DOC 10.3
	API 100
	TI 58

- AI bred to CCR Wide Range 9005A on 5/20/14.
 - PE to Ellingson Durango 2156 from 5/24/14 to 7/19/14.
 - Ultrasound safe to Wide Range and due 2/26/15 with a bull calf.
 - Maternal siblings are lots 59-62, 82-84, 92 & 169.
- Planned Mating EPDs: 9 1.0 66 102 10.1 29 62 32.1 -0.28 0.02 110 65



TNT Miss S47 - Dam of Lot 119

120 KS MISS STUBBY 849 A296

ASA# 2757996

Polled Black Purebred Simmental Cow
Tattoo: A296 • Birthdate: 2/27/13
Adj. BW: 80 lbs • Adj. WW: 524
Owned by: Roger Kenner

SIRE: **LFE BS LEWIS 322U (STUBBY)**
 R PLUS BLACKEDGE
 LFE BS MS ARNOLD 135S
 DAM: **KS WENDELLE W674**
 KS CAPTN JACK T518
 KS MISS LEGACY T519

EPDs	
CE 11	CW 23.4
BW 2.0	YG -0.28
WW 62	MAR 0.00
YW 85	BF -0.04
MCE 9	REA 0.77
MM 22	STAY 24.8
MW 53	DOC 9.8
	API 124
	TI 63

- AI bred to NLC Break Free 72W on 5/20/14.
 - PE to NLC Fast Break 3A from 5/24/14 to 7/19/14.
 - Ultrasound safe to Fast Break and due 3/19/15 with a bull calf.
 - Maternal brother is lot 9.
- Planned Mating EPDs: 13 0.8 64 94 9.7 22 54 26.8 -0.29 0.04 122 64



Lot 120

121 BGL MS HEAVY DUTY A142B

ASA# 2758336

Polled Homozygous Black Purebred Simmental Cow
Tattoo: A142B • Birthdate: 3/19/13
Adj. BW: 112 lbs • Adj. WW: 620
Owned by: Leapaltd Simmentals

SIRE: **BAS HEAVY DUTY**
 TNT DUAL FOCUS T249
 TNT MISS R144
 DAM: **TNT MISS U92**
 TNT KNOCK OUT R206
 TNT MISS TARRYN R37

EPDs	
CE 4	CW 47.8
BW 6.1	YG -0.21
WW 74	MAR 0.09
YW 116	BF -0.06
MCE 7	REA 0.67
MM 15	STAY
MW 52	DOC 8.6
	API 88
	TI 63

- AI bred to Ellingson Identity 9104 on 5/15/14.
 - PE to Ellingson Durango 2156 from 5/24/14 to 7/19/14.
 - Ultrasound safe to Durango and due 4/20/15.
 - Maternal brother is lot 52. Purchased dam at 2009 TNT dispersal.
- Planned Mating EPDs: 10 1.5 67 115 8.4 20 53 41.0 -0.10 0.35 115 70

123 KS MISS STUBBY A553

ASA# 2758064

Polled Black Purebred Simmental Cow
Tattoo: A553 • Birthdate: 3/2/13
Adj. BW: 98 lbs • Adj. WW: 682
Owned by: Erika Kenner

SIRE: **LFE BS LEWIS 322U (STUBBY)**
 R PLUS BLACKEDGE
 LFE BS MS ARNOLD 135S
 DAM: **ESS28**
 SS STARLIGHT K79
 ESM74

EPDs	
CE 9	CW 37.8
BW 5.0	YG -0.25
WW 76	MAR -0.25
YW 103	BF -0.06
MCE 7	REA 0.68
MM 16	STAY 16.6
MW 54	DOC 8.9
	API 90
	TI 60

- AI bred to CCR Wide Range 9005A on 5/20/14.
 - PE to Ellingson Durango 2156 from 5/24/14 to 7/19/14.
 - Ultrasound safe to Durango and due 3/25/15 with a heifer calf.
 - Purchased dam from Eichacker Simmental, Salem, SD.
- Planned Mating EPDs: 12 0.9 68 108 8.5 20 54 36.0 -0.12 0.18 120 68

122 KS MISS LE X642 A500

ASA# 2758043

Polled Homozygous Black Purebred Simmental Cow
Tattoo: A500 • Birthdate: 3/20/13
Adj. BW: 99 lbs • Adj. WW: 582
Owned by: Erika Kenner

SIRE: **KS LIMITED EDITION X642**
 LFEISS BLACKADVANCE426U
 KS MISS VRD T235
 DAM: **KS RETA R297**
 BROOKS ABOVE PAR
 KS BECKY F704

EPDs	
CE 7	CW 35.1
BW 3.9	YG -0.37
WW 63	MAR 0.04
YW 99	BF -0.09
MCE 8	REA 0.80
MM 19	STAY
MW 51	DOC 13.2
	API 97
	TI 59

- AI bred to SAV Final Answer 0035 on 5/20/14.
 - PE to Ellingson Durango 2156 from 5/28/14 to 7/19/14.
 - Ultrasound safe to Final Answer and due 2/26/15 with a heifer calf.
- Planned Mating EPDs: 14 -0.3 69 109 10.5 21 55 34.5 -0.16 0.38 137 75



Lot 123

KENNER SIMMENTAL RANCH

Black Purebred Simmental Bred Heifers

124 KS MISS HEAVY DUTY A634

ASA# 2758097

Polled Homozygous Black Purebred Simmental Cow
Tattoo: A634 • Birthdate: 3/22/13
Adj. BW: 98 lbs • Adj. WW: 674
Owned by: Roger Kenner

— TNT DUAL FOCUS T249

SIRE: **BAS HEAVY DUTY**

— TNT MISS R144

— ELLINGSON BLACKPERFECTOR

DAM: **KS TALLULAH T160**

— KS ROBIN L23

- AI bred to GW-WBF Substance 820Y on 5/20/14.
 - PE to Ellingson Durango 2156 from 5/24/14 to 7/19/14.
 - Ultrasound safe to GW Substance and due 2/26/15 with a bull calf.
- Planned Mating EPDs: 11 2.4 69 110 9.3 21 55 39.4 -0.28 0.40 132 74

EPDs		CW 44.2
CE 7	YG -0.28	
BW 5.0	MAR 0.22	
WW 72	BF -0.06	
YW 112	REA 0.83	
MCE 7	STAY	
MM 21	DOC 7.7	
MW 57	API 106	
	TI 68	



Lot 126

127 KS MISS TOP GEAR A820

ASA# 2758192

Polled Black Purebred Simmental Cow
Tattoo: A820 • Birthdate: 3/19/13
Adj. BW: 84 lbs • Adj. WW: 620
Owned by: Roger Kenner

— THSF FREEDOM 300N

SIRE: **MJ TOP GEAR**

— Q21P

— TH BLACK EDITION 8R

DAM: **KS WESLEY W433**

— KS KIM P276

- AI bred to GW-WBF Substance 820Y on 5/20/14.
 - PE to Ellingson Durango 2156 from 5/24/14 to 7/19/14.
 - Ultrasound safe to Durango and due late April.
 - Same cow family as lot 137.
- Planned Mating EPDs: 12 -0.4 65 109 11.6 22 54 34.6 -0.20 0.24 124 69

EPDs		CW 35.0
CE 9	YG -0.40	
BW 2.4	MAR -0.13	
WW 70	BF -0.08	
YW 104	REA 0.93	
MCE 13	STAY 14.2	
MM 19	DOC 13.6	
MW 54	API 97	
	TI 64	



Lot 129

125 KS MISS RICH BLEND A671

ASA# 2758116

Polled Heterozygous Black Purebred Simmental Cow
Tattoo: A671 • Birthdate: 4/14/13
Adj. BW: 82 lbs • Adj. WW: 591
Owned by: Erika Kenner

— LFE BLACK LAKOTA 385W

SIRE: **LFE RICH BLEND 385Y**

— LFE KISS & TELL 170R

— BAR CK BULL DOZER 429M

DAM: **KS MISS BULL DOZER T493**

— KS MISS FULL FIGURES R26

- AI bred to Ellingson Identity 9104 on 5/20/14.
 - PE to Ellingson Durango 2156 from 5/24/14 to 7/19/14.
 - Ultrasound safe to Identity and due 2/26/15 with a bull calf.
- Planned Mating EPDs: 17 -1.5 57 96 13.8 26 55 25.4 -0.22 0.48 158 74

EPDs		CW 22.6
CE 10	YG -0.25	
BW 1.6	MAR 0.04	
WW 53	BF -0.03	
YW 84	REA 0.74	
MCE 12	STAY 21.9	
MM 18	DOC 6.5	
MW 44	API 117	
	TI 58	

126 KS MISS HEAVY DUTY A815

ASA# 2758189

Homozygous Polled Black Purebred Simmental Cow
Tattoo: A815 • Birthdate: 3/16/13
Adj. BW: 93 lbs • Adj. WW: 620
Owned by: Roger Kenner

— TNT DUAL FOCUS T249

SIRE: **BAS HEAVY DUTY**

— TNT MISS R144

— KS CAPTN JACK T518

DAM: **KS WAVERLY W336**

— KS DEMMI M978

- AI bred to Ellingson Identity 9104 on 5/14/14.
 - PE to Ellingson Durango 2156 from 5/24/14 to 7/19/14.
 - Ultrasound safe to Durango and due 4/16/15.
 - Maternal brother is lot 13.
- Planned Mating EPDs: 12 0.5 64 109 9.7 23 55 36.5 -0.15 0.54 135 75

EPDs		CW 38.7
CE 9	YG -0.30	
BW 4.2	MAR 0.47	
WW 68	BF -0.05	
YW 105	REA 0.88	
MCE 9	STAY	
MM 21	DOC 5.6	
MW 55	API 126	
	TI 72	

128 KS MISS HEAVY DUTY A822

ASA# 2758193

Homozygous Polled Homozygous Black Purebred Simmental Cow
Tattoo: A822 • Birthdate: 4/8/13
Adj. BW: 84 lbs • Adj. WW: 576
Owned by: Roger Kenner

— TNT DUAL FOCUS T249

SIRE: **BAS HEAVY DUTY**

— TNT MISS R144

— WHEATLAND BULL 680S

DAM: **KS WYNTER W436**

— KS KAYLA J497

- AI bred to Ellingson Identity 9104 on 5/14/14.
 - PE to Ellingson Durango 2156 from 5/24/14 to 7/19/14.
 - Ultrasound safe to Durango and due 4/16/15.
 - Maternal brother is lot 15. Dam is full sister to KS Black Diamond.
- Planned Mating EPDs: 11 -0.2 60 107 9.0 24 54 34.1 -0.19 0.36 122 69

EPDs		CW 33.9
CE 7	YG -0.38	
BW 2.9	MAR 0.11	
WW 60	BF -0.04	
YW 99	REA 1.14	
MCE 8	STAY	
MM 24	DOC 7.8	
MW 54	API 101	
	TI 61	

129 KS MISS HEAVY DUTY A858

ASA# 2758217

Polled Black Purebred Simmental Cow
Tattoo: A858 • Birthdate: 3/26/13
Adj. BW: 74 lbs • Adj. WW: 568
Owned by: Erika Kenner

— TNT DUAL FOCUS T249

SIRE: **BAS HEAVY DUTY**

— TNT MISS R144

— WCS MR DESIGN 857U

DAM: **WCS MS TINY 0006X**

— WCS788T

- AI bred to GW-WBF Substance 820Y on 5/20/14.
 - PE to Ellingson Durango 2156 from 5/24/14 to 7/19/14.
 - Ultrasound safe to GW Substance and due 2/26/15 with a bull calf.
 - Purchased dam from Western Cattle Source, Crawford, NE.
- Planned Mating EPDs: 13 0.6 64 100 10.5 19 51 30.7 -0.13 0.61 153 78

EPDs		CW 26.9
CE 12	YG 0.03	
BW 1.3	MAR 0.65	
WW 63	BF 0.05	
YW 93	REA 0.47	
MCE 9	STAY	
MM 16	DOC 8.2	
MW 48	API 147	
	TI 76	

KENNER SIMMENTAL RANCH

Black Purebred Simmental Bred Heifers

130 KS MISS BLK DIAMOND A843

ASA# 2758205

Homozygous Polled Black Purebred Simmental Cow
Tattoo: A843 • Birthdate: 3/2/13
Adj. BW: 69 lbs • Adj. WW: 501
Owned by: Roger Kenner

SIRE: **KS BLACK DIAMOND W992**
WHEATLAND BULL 680S
KS KAYLA J497
DAM: **KS WASEME W597**
TH BLACK EDITION 8R
KS PAULA S419

EPDs		CW 21.5	
CE	9	YG	-0.46
BW	1.1	MAR	-0.13
WW	51	BF	-0.05
YW	83	REA	1.17
MCE	9	STAY	14.1
MM	28	DOC	11.6
MW	53	API	94
		TI	56

- AI bred to SAV Final Answer 0035 on 5/21/14.
 - PE to Ellingson Durango 2156 from 5/24/14 to 7/19/14.
 - Ultrasound safe to Final Answer and due 2/27/15 with a bull calf.
- Planned Mating EPDs: 15 -1.7 63 101 11.2 25 57 27.7 -0.21 0.30 137 72

132 KS MISS HEAVY DUTY A894

ASA# 2758248

Homozygous Polled Black Purebred Simmental Cow
Tattoo: A894 • Birthdate: 3/13/13
Adj. BW: 99 lbs • Adj. WW: 559
Owned by: Erika Kenner

SIRE: **BAS HEAVY DUTY**
TNT DUAL FOCUS T249
TNT MISS R144
DAM: **KS LYNETTE X475**
TNT TANKER U263
TNT MISS TRIXIE R161

EPDs		CW 37.6	
CE	5	YG	-0.26
BW	4.5	MAR	0.20
WW	65	BF	-0.04
YW	102	REA	0.82
MCE	12	STAY	
MM	17	DOC	8.4
MW	49	API	105
		TI	62

- AI bred to CCR Wide Range 9005A on 5/20/14.
 - PE to Ellingson Durango 2156 from 5/24/14 to 7/19/14.
 - Ultrasound safe to Durango and due 3/19/15 with a bull calf.
- Planned Mating EPDs: 11 0.7 63 108 10.9 21 52 35.9 -0.13 0.40 124 70

133 KS MISS TOP GEAR A898

ASA# 2758251

Homozygous Polled Heterozygous Black Purebred Simmental Cow
Tattoo: A898 • Birthdate: 3/19/13
Adj. BW: 78 lbs • Adj. WW: 636
Owned by: Roger Kenner

SIRE: **MJ TOP GEAR**
THSF FREEDOM 300N
O21P
DAM: **KS JANET X505**
LFE RED NORTHERN 376T
RIV RED BRIGADIA 969J

EPDs		CW 25.9	
CE	9	YG	-0.37
BW	0.6	MAR	-0.07
WW	63	BF	-0.09
YW	93	REA	0.65
MCE	13	STAY	23.9
MM	23	DOC	13.3
MW	54	API	119
		TI	64

- AI bred to Ellingson Identity 9104 on 5/20/14.
 - PE to Ellingson Durango 2156 from 5/24/14 to 7/19/14.
 - Ultrasound safe to Identity and due 2/26/15 with a bull calf.
- Planned Mating EPDs: 17 -2.0 63 101 14.1 28 60 27.1 -0.28 0.43 157 77

135 KS MISS BLK GOLD A973

ASA# 2758315

Polled Homozygous Black Purebred Simmental Cow
Tattoo: A973 • Birthdate: 3/14/13
Adj. BW: 84 lbs • Adj. WW: 648
Owned by: Roger Kenner

SIRE: **TRAXS BLACK GOLD Y57**
KS BLACK DIAMOND W992
SRS S21
DAM: **KS MISS YURIKO Y772**
ELLINGSON LEGACY M229
KS UNITY U992

EPDs		CW 43.6	
CE	7	YG	-0.25
BW	3.7	MAR	0.13
WW	73	BF	-0.05
YW	114	REA	0.79
MCE	8	STAY	16.0
MM	28	DOC	8.8
MW	65	API	112
		TI	71

- AI bred to CCR Wide Range 9005A on 5/20/14.
 - PE to Ellingson Durango 2156 from 5/24/14 to 7/19/14.
 - Ultrasound safe to Wide Range and due 2/26/15 with a bull calf.
 - Maternal granddam is dam of lot 141.
- Planned Mating EPDs: 11 0.7 70 108 10.4 30 65 35.3 -0.23 0.17 126 71

131 KS MISS RED RIDGE A884

ASA# 2758240

Polled Heterozygous Black Purebred Simmental Cow
Tattoo: A884 • Birthdate: 3/19/13
Adj. BW: 88 lbs • Adj. WW: 690
Owned by: Erika Kenner

SIRE: **LFE RED RIDGE 809W**
LFE MR LEWIS 462P
LFE KIRBIE 217N
DAM: **KS KENDRA X387**
TNT DUAL FOCUS T249
TNT MISS TAREN N96

EPDs		CW 40.9	
CE	6	YG	-0.19
BW	3.6	MAR	0.12
WW	76	BF	-0.07
YW	111	REA	0.47
MCE	9	STAY	
MM	20	DOC	7.4
MW	58	API	103
		TI	68

- AI bred to Ellingson Identity 9104 on 5/20/14.
 - PE to Ellingson Durango 2156 from 5/24/14 to 7/19/14.
 - Ultrasound safe to Identity and due 2/26/15 with a bull calf.
 - Same cow family as lot 134.
- Planned Mating EPDs: 15 -0.5 69 110 12.1 27 62 34.6 -0.19 0.52 149 79



BAS Heavy Duty - Sire of Lot 132

134 KS MISS STUBBY A948

ASA# 2758290

Polled Black Purebred Simmental Cow
Tattoo: A948 • Birthdate: 2/22/13
Adj. BW: 83 lbs • Adj. WW: 609
Owned by: Erika Kenner

SIRE: **LFE BS LEWIS 322U (STUBBY)**
R PLUS BLACKEDGE
LFE BS MS ARNOLD 135S
DAM: **KS MISS YAZ Y387**
ELLINGSON LEGACY M229
TNT MISS TAREN N96

EPDs		CW 29.4	
CE	12	YG	-0.24
BW	2.7	MAR	-0.13
WW	67	BF	-0.03
YW	94	REA	0.77
MCE	8	STAY	21.1
MM	18	DOC	7.7
MW	51	API	111
		TI	61

- AI bred to Ellingson Identity 9104 on 5/20/14.
 - PE to Ellingson Durango 2156 from 5/24/14 to 7/19/14.
 - Ultrasound safe to Durango and due 3/22/15 with a heifer calf.
 - Same cow family as lot 131.
- Planned Mating EPDs: 14 -0.3 64 104 9.1 21 53 31.8 -0.12 0.24 129 69

136 KS MISS TOP GEAR A978

ASA# 2758320

Polled Black Purebred Simmental Cow
Tattoo: A978 • Birthdate: 3/13/13
Adj. BW: 74 lbs • Adj. WW: 651
Owned by: Erika Kenner

SIRE: **MJ TOP GEAR**
THSF FREEDOM 300N
O21P
DAM: **KS MISS YONI Y847**
ELLINGSON LEGACY M229
KS WINSLOW W651

EPDs		CW 32.5	
CE	13	YG	-0.36
BW	-1.4	MAR	-0.05
WW	69	BF	-0.09
YW	109	REA	0.74
MCE	13	STAY	16.1
MM	23	DOC	14.3
MW	58	API	117
		TI	72

- AI bred to Ellingson Identity 9104 on 5/20/14.
 - PE to Ellingson Durango 2156 from 5/24/14 to 7/19/14.
 - Ultrasound safe to Durango and due 3/19/15 with a heifer calf.
 - Same cow family as lot 143.
- Planned Mating EPDs: 14 -2.3 65 111 11.6 24 56 33.4 -0.18 0.28 135 73

KENNER SIMMENTAL RANCH

Black 3/4 SimAngus Bred Heifers



Lot 137



Lot 138

137 KS MISS TODD A433

ASA# 2758021

Polled Black 3/4 SimAngus Cow
Tattoo: A433 • Birthdate: 3/17/13
Adj. BW: 89 lbs • Adj. WW: 574
Owned by: Roger Kenner

SIRE: **SRF SHEAR FORCE 370W (TODD)**
 — HOOKS SHEAR FORCE 38K
 — BVSSRFMISSBODYBUILDER370
 — B C C BUSHWACKER 41-93
 DAM: **KS KIM P276**
 — KS DANIELLE M782

EPDs		CW 30.3
CE	5	YG -0.22
BW	4.8	MAR 0.14
WW	61	BF 0.00
YW	90	REA 0.91
MCE	11	STAY
MM	32	DOC 9.9
MW	63	API 98
		TI 59

- AI bred to Hooks Shear Force 38K on 5/20/14.
- PE to NLC Fast Break 3A from 5/24/14 to 7/19/14.
- Ultrasound safe to Fast Break and due 3/16/15 with a bull calf.
- Same cow family as lot 127.

Planned Mating EPDs: 10 2.2 64 96 10.9 27 59 30.2 -0.26 0.11 117 64

138 KS MISS TODD A435

ASA# 2758022

Polled Black 3/4 SimAngus Cow
Tattoo: A435 • Birthdate: 3/15/13
Adj. BW: 90 lbs • Adj. WW: 560
Owned by: Roger Kenner

SIRE: **SRF SHEAR FORCE 370W (TODD)**
 — HOOKS SHEAR FORCE 38K
 — BVSSRFMISSBODYBUILDER370
 — BROOKS BUSHSTOCKER
 DAM: **KS HOPE P287**
 — KS JENNIFER M86

EPDs		CW 24.9
CE	6	YG -0.39
BW	4.2	MAR 0.32
WW	56	BF -0.07
YW	82	REA 0.87
MCE	12	STAY
MM	32	DOC 9.6
MW	60	API 110
		TI 62

- AI bred to NLC Break Free 72W on 5/14/14.
- PE to NLC Fast Break 3A from 5/24/14 to 7/19/14.
- Ultrasound safe to Fast Break and due 4/5/15.
- Maternal brother is lot 30.

Planned Mating EPDs: 10 1.9 61 92 11.2 27 57 27.5 -0.35 0.20 122 65

140 KS MISS RICH BLEND A698

ASA# 2758126

Homozygous Polled Heterozygous Black 3/4 Red SimAngus Cow
Tattoo: A698 • Birthdate: 3/20/13
Adj. BW: 99 lbs • Adj. WW: 612
Owned by: Roger Kenner

SIRE: **LFE RICH BLEND 385Y**
 — LFE BLACK LAKOTA 385W
 — LFE KISS & TELL 170R
 — NEO-SHO MILLENIUM 065G
 DAM: **KS UDELE U106**
 — KS CATE K817

EPDs		CW 34.3
CE	5	YG 0.01
BW	5.3	MAR -0.07
WW	60	BF 0.00
YW	94	REA 0.29
MCE	14	STAY
MM	21	DOC 8.2
MW	51	API 88
		TI 51

- AI bred to Ellingson Identity 9104 on 5/20/14.
- PE to NLC Fast Break 3A from 5/24/14 to 7/19/14.
- Ultrasound safe to Identity and due 2/26/15 with a heifer calf.

Planned Mating EPDs: 15 0.4 61 102 14.4 28 58 31.3 -0.09 0.43 142 71



Lot 141

139 KS MISS BLK DIAMOND A514

ASA# 2758048

Homozygous Polled Homozygous Black 3/4 SimAngus Cow
Tattoo: A514 • Birthdate: 2/23/13
Adj. BW: 81 lbs • Adj. WW: 575
Owned by: Erika Kenner

SIRE: **KS BLACK DIAMOND W992**
 — WHEATLAND BULL 680S
 — KS KAYLA J497
 — FF PARADIGM M321
 DAM: **KS RITA R370**
 — KS RACHAEL N852

EPDs		CW 38.2
CE	7	YG -0.33
BW	2.8	MAR -0.19
WW	66	BF -0.06
YW	107	REA 0.96
MCE	6	STAY
MM	25	DOC 11.4
MW	58	API 84
		TI 57

- AI bred to Hooks Shear Force 38K on 5/20/14.
- PE to NLC Fast Break 3A from 5/24/14 to 7/19/14.
- Ultrasound safe to Shear Force and due 2/26/15 with a bull calf.

Planned Mating EPDs: 15 -0.4 60 90 9.2 29 59 23.0 -0.45 0.18 135 68

141 KS MISS BLK GOLD A772

ASA# 2758169

Polled Homozygous Black 3/4 SimAngus Cow
Tattoo: A772 • Birthdate: 4/15/13
Adj. BW: 59 lbs • Adj. WW: 464
Owned by: Roger Kenner

SIRE: **TRAXS BLACK GOLD Y57**
 — KS BLACK DIAMOND W992
 — SRS S21
 — S A V 8180 TRAVELER 004
 DAM: **KS UNITY U992**
 — KS KAYLA J497

EPDs		CW 23.7
CE	6	YG -0.12
BW	2.3	MAR 0.20
WW	50	BF -0.01
YW	83	REA 0.48
MCE	8	STAY
MM	37	DOC 7.4
MW	52	API 102
		TI 58

- AI bred to Hooks Shear Force 38K on 5/21/14.
- PE to NLC Fast Break 3A from 5/24/14 to 7/19/14.
- Ultrasound safe to Shear Force and due 2/27/15 with a bull calf.
- Dam is granddam of lot 135.

Planned Mating EPDs: 14 -0.7 52 78 10.5 33 59 15.8 -0.35 0.38 144 69

KENNER SIMMENTAL RANCH

Black 3/4 SimAngus Bred Heifers

142 KS MISS TOP GEAR A827

ASA# 2758196

Polled Heterozygous Black 3/4 Red SimAngus Cow
Tattoo: A827 • Birthdate: 3/24/13
Adj. BW: 101 lbs • Adj. WW: 569
Owned by: Roger Kenner

SIRE: **MJ TOP GEAR**
THSF FREEDOM 300N
O21P

DAM: **KS WYOMING W466**
RED FINELINEMULBERRY 26P
RC RED LIGHT 160P

- AI bred to CCR Wide Range 9005A on 5/20/14.
- PE to NLC Fast Break 3A from 5/28/14 to 7/19/14.
- Ultrasound safe to Wide Range and due 2/26/15 with a bull calf.
- Maternal brother is lot 107.

Planned Mating EPDs: 9 0.6 68 107 11.5 26 60 34.5 -0.18 0.13 120 69

EPDs		CW 41.9
CE	4	YG -0.15
BW	3.4	MAR 0.04
WW	70	BF -0.05
YW	112	REA 0.50
MCE	10	STAY
MM	20	DOC 13.2
MW	55	API 93
		TI 62

143 KS MISS TOP GEAR A847

ASA# 2758209

Polled Black 3/4 SimAngus Cow
Tattoo: A847 • Birthdate: 3/29/13
Adj. BW: 64 lbs • Adj. WW: 608
Owned by: Erika Kenner

SIRE: **MJ TOP GEAR**
THSF FREEDOM 300N
O21P

DAM: **KS WINSLOW W651**
S CHISUM 6175
KS MISS DAKOTA T328

- PE to NLC Fast Break 3A from 5/30/14 to 7/19/14.
- Ultrasound safe to Fast Break and due 4/5/15.
- Same cow family as lot 136.

Planned Mating EPDs: 13 -0.6 67 105 11.1 23 57 31.9 -0.24 0.06 127 68

EPDs		CW 33.7
CE	10	YG -0.18
BW	-0.7	MAR 0.05
WW	67	BF -0.01
YW	109	REA 0.73
MCE	12	STAY
MM	25	DOC 14.3
MW	59	API 120
		TI 68

144 KS MISS BLK DIAMOND A862

ASA# 2758220

Homozygous Polled Homozygous Black 3/4 SimAngus Cow
Tattoo: A862 • Birthdate: 2/28/13
Adj. BW: 82 lbs • Adj. WW: 703
Owned by: Roger Kenner

SIRE: **KS BLACK DIAMOND W992**
WHEATLAND BULL 680S
KS KAYLA J497

DAM: **KS MARIETTA X30**
S A V FINAL ANSWER 0035
ELLINGSON MS LEGACY N362

- AI bred to NLC Break Free 72W on 5/16/14.
- PE to NLC Free Agent 40A from 5/23/14 to 7/19/14.
- Ultrasound safe to Free Agent and due 3/16/15 with a heifer calf.

Planned Mating EPDs: 10 2.1 74 114 10.1 23 60 40.5 -0.30 0.01 112 67

EPDs		CW 44.1
CE	8	YG -0.30
BW	1.7	MAR -0.09
WW	76	BF -0.06
YW	121	REA 0.89
MCE	7	STAY
MM	28	DOC 11.7
MW	66	API 97
		TI 67



145 KS MISS TOP GEAR A870

ASA# 2758228

Polled Black 3/4 SimAngus Cow
Tattoo: A870 • Birthdate: 3/12/13
Adj. BW: 71 lbs • Adj. WW: 514
Owned by: Roger Kenner

SIRE: **MJ TOP GEAR**
THSF FREEDOM 300N
O21P

DAM: **KS KELSEY X122**
S A V FINAL ANSWER 0035
KS CONNIE K9061

- AI bred to Hooks Shear Force 38K on 5/28/14.
- PE to NLC Fast Break 3A from 5/30/14 to 7/19/14.
- Ultrasound safe to Fast Break and due 4/20/15.

Planned Mating EPDs: 13 -0.6 62 96 11.3 21 52 26.3 -0.31 0.15 133 68

EPDs		CW 22.5
CE	12	YG -0.31
BW	-0.6	MAR 0.23
WW	58	BF -0.04
YW	90	REA 0.83
MCE	12	STAY
MM	20	DOC 13.9
MW	49	API 131
		TI 67

146 KS MISS BLK GOLD A880

ASA# 2758236

Polled Homozygous Black 3/4 SimAngus Cow
Tattoo: A880 • Birthdate: 4/11/13 • DDC
Adj. BW: 77 lbs • Adj. WW: 571
Owned by: Roger Kenner

SIRE: **TRAXS BLACK GOLD Y57**
KS BLACK DIAMOND W992
SRS S21

DAM: **KS NESLIE X331**
G A R PREDESTINED
ELLINGSON MS LEGACY N362

- AI bred to Hooks Shear Force 38K on 5/20/14.
- PE to NLC Fast Break 3A from 5/24/14 to 7/19/14.
- Ultrasound safe to Fast Break and due 4/11/15.
- She is a DD carrier. Do not breed to another DD carrier.

Planned Mating EPDs: 11 0.8 61 95 8.8 27 57 27.8 -0.31 0.45 135 73

EPDs		CW 25.5
CE	6	YG -0.31
BW	2.1	MAR 0.83
WW	55	BF -0.04
YW	87	REA 0.80
MCE	7	STAY
MM	31	DOC 9.5
MW	59	API 134
		TI 77

147 KS MISS OLIE A983

ASA# 2804604

Polled Black 3/4 SimAngus Cow
Tattoo: A983 • Birthdate: 3/1/13
Adj. BW: 77 lbs • Adj. WW: 579
Owned by: Roger Kenner

SIRE: **ELLINGSON LEGACY M229**
NICHOLS LEGACY G151
ELLINGSON MS PSTOCK K58

DAM: **KR MS BEYONCE Y28**
S A V FINAL ANSWER 0035
KR MISS NOPHAULT P34

- AI bred to Hooks Shear Force 38K on 5/20/14.
- PE to NLC Fast Break 3A from 5/24/14 to 7/19/14.
- Ultrasound safe to Fast Break and due late April.
- Purchased dam from Kaelberer Ranch at Edge of the West Sale.

Planned Mating EPDs: 16 -0.6 65 102 9.4 23 56 29.8 -0.33 0.21 141 72

EPDs		CW 29.5
CE	16	YG -0.35
BW	-0.7	MAR 0.34
WW	64	BF -0.06
YW	102	REA 0.90
MCE	8	STAY
MM	25	DOC 12.4
MW	57	API 147
		TI 75



Final site: The cattle moved in November 5 and all the pens were fully functional by December 5.

KENNER SIMMENTAL RANCH

Black 1/2 SimAngus Bred Heifers



KS Kayla J497 - Dam of Lots 148 - 154



S A V Final Answer 0035 - Sire of Lots 148-150

LOTS 148 - 150 ARE FULL SISTERS TO THE DAM OF LOT 34.



Lot 148

148 KS MS FINAL ANSWER A292

ASA# 2757995

Polled Homozygous Black 1/2 SimAngus Cow
Tattoo: A292 • Birthdate: 2/23/13 • ET
Adj. BW: 73 lbs • Adj. WW: 551
Owned by: Roger Kenner

SIRE: S A V FINAL ANSWER 0035
SITZ TRAVELER 8180
S A V EMULOUS 8145
DAM: KS KAYLA J497
LRS PREFERRED STOCK 370C
DX MS ARAPAHOE PRINCESS

EPDs		CW 36.8
CE	12	YG -0.26
BW	-0.1	MAR 0.19
WW	73	BF -0.04
YW	113	REA 0.80
MCE	12	STAY
MM	25	DDC 11.3
MW	61	API 130
		TI 74

- AI bred to NLC Break Free 72W on 5/20/14.
 - PE to NLC Fast Break 3A from 5/24/14 to 7/19/14.
 - Ultrasound safe to Break Free and due 2/26/15 with a heifer calf.
- Planned Mating EPDs: 15 0.2 74 113 11.7 20 57 37.5 -0.31 0.15 139 74



Lot 149

149 KS MS FINAL ANSWER A824

ASA# 2758195

Polled Homozygous Black 1/2 SimAngus Cow
Tattoo: A824 • Birthdate: 2/26/13 • ET
Adj. BW: 74 lbs • Adj. WW: 617
Owned by: Roger Kenner

SIRE: S A V FINAL ANSWER 0035
SITZ TRAVELER 8180
S A V EMULOUS 8145
DAM: KS KAYLA J497
LRS PREFERRED STOCK 370C
DX MS ARAPAHOE PRINCESS

EPDs		CW 36.8
CE	12	YG -0.14
BW	-0.1	MAR 0.29
WW	73	BF 0.00
YW	113	REA 0.74
MCE	12	STAY
MM	25	DDC 11.3
MW	61	API 134
		TI 75

- AI bred to NLC Break Free 72W on 5/20/14.
 - PE to NLC Fast Break 3A from 5/24/14 to 7/19/14.
 - Ultrasound safe to Break Free and due 2/26/15 with a bull calf.
- Planned Mating EPDs: 15 0.2 74 113 11.7 20 57 37.5 -0.25 0.20 141 75



Lot 150

150 KS MS FINAL ANSWER A8428

ASA# 2758380

Polled Homozygous Black 1/2 SimAngus Cow
Tattoo: A8428 • Birthdate: 2/26/13 • ET
Adj. BW: 88 lbs • Adj. WW: 572
Owned by: Roger Kenner

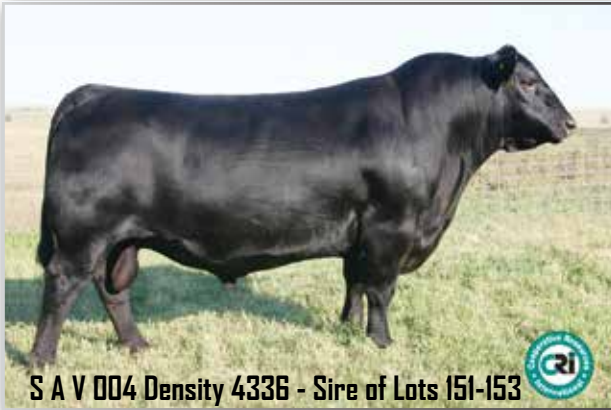
SIRE: S A V FINAL ANSWER 0035
SITZ TRAVELER 8180
S A V EMULOUS 8145
DAM: KS KAYLA J497
LRS PREFERRED STOCK 370C
DX MS ARAPAHOE PRINCESS

EPDs		CW 36.8
CE	12	YG -0.23
BW	-0.1	MAR 0.28
WW	73	BF -0.05
YW	113	REA 0.68
MCE	12	STAY
MM	25	DDC 11.3
MW	61	API 134
		TI 76

- AI bred to Hooks Shear Force 38K on 5/21/14.
 - PE to NLC Fast Break 3A from 5/24/14 to 7/19/14.
 - Ultrasound safe to Shear Force and due 2/27/15 with a bull calf.
- Planned Mating EPDs: 17 -1.9 64 93 12.5 29 61 22.3 -0.40 0.42 162 78

KENNER SIMMENTAL RANCH

Black 1/2 SimAngus Bred Heifers



S A V 004 Density 4336 - Sire of Lots 151-153

151 KS MISS DENSITY A414

ASA# 2758018

Polled Homozygous Black 1/2 SimAngus Cow
Tattoo: A414 • Birthdate: 3/21/13 • ET
Adj. BW: 77 lbs • Adj. WW: 488
Owned by: Roger Kenner

SIRE: S A V 8180 TRAVELER 004
S A V 004 DENSITY 4336
S A V MAY 7238
DAM: KS KAYLA J497
LRS PREFERRED STOCK 370C
DX MS ARAPAHOE PRINCESS

EPDs		CW 39.5
CE	5	YG -0.18
BW	3.0	MAR 0.42
WW	68	BF -0.03
YW	109	REA 0.74
MCE	6	STAY
MM	23	DOC 8.4
MW	57	API 106
		TI 71

- AI bred to Hooks Shear Force 38K on 5/28/14.
 - PE to NLC Fast Break 3A from 5/30/14 to 7/19/14.
 - Ultrasound safe to Shear Force and due 3/6/15 with a heifer calf.
- Planned Mating EPDs: 14 -0.3 61 91 9.4 28 59 23.7 -0.38 0.49 148 76

152 KS MISS DENSITY A7801

ASA# 2758374

Polled Homozygous Black 1/2 SimAngus Cow
Tattoo: A7801 • Birthdate: 3/25/13 • ET
Adj. BW: 91 lbs • Adj. WW: 574
Owned by: Roger Kenner

SIRE: S A V 8180 TRAVELER 004
S A V 004 DENSITY 4336
S A V MAY 7238
DAM: KS KAYLA J497
LRS PREFERRED STOCK 370C
DX MS ARAPAHOE PRINCESS

EPDs		CW 39.5
CE	5	YG -0.22
BW	3.0	MAR 0.34
WW	68	BF -0.02
YW	109	REA 0.86
MCE	6	STAY
MM	23	DOC 8.4
MW	57	API 102
		TI 69

- AI bred to Hooks Shear Force 38K on 5/20/14.
 - PE to NLC Fast Break 3A from 5/24/14 to 7/19/14.
 - Ultrasound safe to Shear Force and due 2/26/15 with a heifer calf.
- Planned Mating EPDs: 14 -0.3 61 91 9.4 28 59 23.7 -0.40 0.45 146 75



153 KS MISS DENSITY A482

ASA# 2758036

Polled Homozygous Black 1/2 SimAngus Cow
Tattoo: A482 • Birthdate: 3/22/13 • ET
Adj. BW: 94 lbs • Adj. WW: 570
Owned by: Roger Kenner

SIRE: S A V 8180 TRAVELER 004
S A V 004 DENSITY 4336
S A V MAY 7238
DAM: KS KAYLA J497
LRS PREFERRED STOCK 370C
DX MS ARAPAHOE PRINCESS

EPDs		CW 39.5
CE	5	YG -0.22
BW	3.0	MAR 0.33
WW	68	BF -0.03
YW	109	REA 0.80
MCE	6	STAY
MM	23	DOC 8.4
MW	57	API 102
		TI 69

- AI bred to Hooks Shear Force 38K on 5/20/14.
 - PE to NLC Fast Break 3A from 5/24/14 to 7/19/14.
 - Ultrasound safe to Shear Force and due 2/26/15 with a heifer calf.
- Planned Mating EPDs: 14 -0.3 61 91 9.4 28 59 23.7 -0.40 0.44 145 75

154 KS MISS ABERDEEN A8349

ASA# 2758379

Polled Homozygous Black 1/2 SimAngus Cow
Tattoo: A8349 • Birthdate: 3/22/13 • ET
Adj. BW: 60 lbs • Adj. WW: 599
Owned by: Roger Kenner

SIRE: C R A BEXTOR 872 5205 608
TC ABERDEEN 759
TC BLACKBIRD 4034
DAM: KS KAYLA J497
LRS PREFERRED STOCK 370C
DX MS ARAPAHOE PRINCESS

EPDs		CW 37.0
CE	10	YG -0.36
BW	0.7	MAR 0.20
WW	67	BF -0.04
YW	110	REA 1.14
MCE	11	STAY
MM	30	DOC 13.4
MW	64	API 119
		TI 71

- AI bred to Hooks Shear Force 38K on 5/23/14.
 - PE to NLC Fast Break 3A from 5/28/14 to 7/19/14.
 - Ultrasound safe to Shear Force and due 3/1/15 with a heifer calf.
- Planned Mating EPDs: 16 -1.5 61 92 11.8 32 63 22.4 -0.47 0.38 154 76

155 CGS MS FINAL ANSWER A1C

ASA# 2782670

Polled Homozygous Black 1/2 SimAngus Cow
Tattoo: A1C • Birthdate: 2/23/13
Adj. BW: 61 lbs • Adj. WW: 502
Owned by: Chris Geir

SIRE: S A V 8180 TRAVELER 004
S A V FINAL ANSWER 0035
S A V EMULOUS 8145
DAM: KS MISS BREANN Y202
HTP SVF IN DEW TIME
KS MISS PERFECTOR L855

EPDs		CW 25.6
CE	17	YG -0.10
BW	-2.2	MAR 0.43
WW	67	BF 0.01
YW	100	REA 0.63
MCE	13	STAY
MM	19	DOC 11.9
MW	52	API 159
		TI 77

- AI bred to Hooks Shear Force 38K on 5/21/14.
 - PE to NLC Fast Break 3A from 5/24/14 to 7/19/14.
 - Ultrasound safe to Fast Break and due 3/23/15 with a bull calf.
- Planned Mating EPDs: 16 -1.4 67 101 11.6 20 54 27.9 -0.20 0.25 143 72



Chris Geir has worked for us for six years now and has a few head of cows with us. He loves cows and has a special relationship with some of them! This might be why it takes him longer to check pastures!! He is very good with the animals.

KENNER SIMMENTAL RANCH

Black 1/2 & 1/4 SimAngus & Red Purebred Simmental Bred Heifers

156 KS MISS SUBSTANCE A402

ASA# 2758014

Polled Homozygous Black 1/2 SimAngus Cow
Tattoo: A402 • Birthdate: 2/24/13
Adj. BW: 94 lbs • Adj. WW: 607
Owned by: Roger Kenner

SIRE: **BENFIELD SUBSTANCE 8506**
H A IMAGE MAKER 0415
BENFIELD EDELLA 1105
WLE POWER STROKE
DAM: **BROOKS PERFECT STROKE**
BROOKS PERFECT LINDA

EPDs		CW 42.0
CE	10	YG -0.08
BW	3.1	MAR 0.19
WW	75	BF -0.03
YW	114	REA 0.45
MCE	7	STAY
MM	21	DOC 12.0
MW	59	API 110
		TI 69

- AI bred to Hooks Shear Force 38K on 5/28/14.
 - PE to NLC Fast Break 3A from 5/30/14 to 7/19/14.
 - Ultrasound safe to Shear Force and due 3/6/15 with a bull calf.
 - Same cow family as lots 77 & 165.
- Planned Mating EPDs: 16 -0.3 65 93 9.8 27 60 24.9 -0.33 0.37 149 75



159 KS MISS VEGAS A947

ASA# 2758289

Polled Homozygous Black 1/2 SimAngus Cow
Tattoo: A947 • Birthdate: 2/22/13
Adj. BW: 70 lbs • Adj. WW: 540
Owned by: Erika Kenner

SIRE: **KS VEGAS X130**
S A V FINAL ANSWER 0035
ELLINGSON MS LEGACY N362
HF KODIAK 5R
DAM: **KS MISS YULIANA**
KS KAYLA J497

EPDs		CW 17.8
CE	12	YG -0.28
BW	-2.0	MAR 0.41
WW	57	BF -0.07
YW	85	REA 0.46
MCE	8	STAY
MM	23	DOC 11.6
MW	51	API 131
		TI 71

- PE to NLC Fast Break 3A from 5/30/14 to 7/19/14.
 - Ultrasound safe to Fast Break and due 3/14/15 with a bull calf.
 - The dams of lots 158 & 159 are full ET flush sisters.
- Planned Mating EPDs: 13 -1.3 62 94 9.0 22 53 24.0 -0.29 0.24 130 69

Red Purebred Simmental Bred Heifers



157 KS MS FINAL ANSWER A508

ASA# 2758046

Homozygous Polled Homozygous Black 1/2 SimAngus Cow
Tattoo: A508 • Birthdate: 2/19/13
Adj. BW: 78 lbs • Adj. WW: 602
Owned by: Erika Kenner

SIRE: **S A V FINAL ANSWER 0035**
SITZ TRAVELER 8180
S A V EMULOUS 8145
BLACK SHAMROCK E157
DAM: **KS ROBINETTE R355**
ELLINGSON MS LEGACY N362

EPDs		CW 27.7
CE	14	YG -0.25
BW	-0.9	MAR 0.28
WW	65	BF -0.03
YW	99	REA 0.78
MCE	13	STAY
MM	25	DOC 12.1
MW	58	API 139
		TI 72

- AI bred to Hooks Shear Force 38K on 5/21/14.
 - PE to Ellingson Durango 2156 from 5/24/14 to 7/19/14.
 - Ultrasound safe to Shear Force and due 2/27/15 with a heifer calf.
- Planned Mating EPDs: 18 -2.3 60 86 12.8 29 59 17.8 -0.41 0.42 164 76

158 KS MISS VEGAS A942

ASA# 2758284

Polled Homozygous Black 1/2 SimAngus Cow
Tattoo: A942 • Birthdate: 3/1/13
Adj. BW: 81 lbs • Adj. WW: 516
Owned by: Erika Kenner

SIRE: **KS VEGAS X130**
S A V FINAL ANSWER 0035
ELLINGSON MS LEGACY N362
HF KODIAK 5R
DAM: **KS MISS YANDA Y212**
KS KAYLA J497

EPDs		CW 21.3
CE	10	YG -0.05
BW	-0.2	MAR 0.47
WW	57	BF 0.04
YW	86	REA 0.56
MCE	8	STAY
MM	23	DOC 11.6
MW	51	API 126
		TI 69

- AI bred to Hooks Shear Force 38K on 5/21/14.
 - PE to NLC Fast Break 3A from 5/24/14 to 7/19/14.
 - Ultrasound safe to Shear Force and due 2/27/15 with a bull calf.
 - The dams of lots 158 & 159 are full ET flush sisters.
- Planned Mating EPDs: 16 -1.9 56 80 10.3 28 56 14.6 -0.31 0.51 157 75

160 KS MS FINAL ANSWER A170

ASA# 2758391

Polled Black 1/4 SimAngus Cow
Tattoo: A170 • Birthdate: 4/2/13
Adj. BW: 79 lbs • Adj. WW: 502
Owned by: Roger Kenner

SIRE: **KS FINAL ANSWER X701**
S A V FINAL ANSWER 0035
KS ULRICA U157

EPDs		CW 11.9
CE	11	YG -0.11
BW	-0.7	MAR 0.11
WW	49	BF -0.02
YW	72	REA 0.20
MCE	6	STAY
MM	17	DOC 7.2
MW	41	API 100
		TI 55

- AI bred to Hooks Shear Force 38K on 5/20/14.
 - PE to NLC Fast Break 3A from 5/24/14 to 7/19/14.
 - Ultrasound safe to Fast Break and due 3/20/15 with a bull calf.
 - Natural calf of a Trans Ova recip cow.
- Planned Mating EPDs: 13 -0.6 58 87 8.2 19 48 21.0 -0.21 0.09 117 62

161 BGL MISS RED RIDGE A153B

ASA# 2758342

Polled Red Purebred Simmental Cow
Tattoo: A153B • Birthdate: 4/16/13 • DLF
Adj. BW: 73 lbs • Adj. WW: 584
Owned by: Leapaltd Simmentals

SIRE: **LFE RED RIDGE 809W**
LFE MR LEWIS 462P
LFE KIRBIE 217N
LFE RED NORTHERN 376T
DAM: **BGL WENDY W121B**
BGL MORGAN 55B

EPDs		CW 27.1
CE	5	YG -0.34
BW	2.2	MAR 0.03
WW	61	BF -0.09
YW	91	REA 0.57
MCE	10	STAY 18.9
MM	26	DOC 13.4
MW	56	API 106
		TI 63

- PE to Pelton HH 265Z from 5/30/14 to 7/19/14.
 - Ultrasound safe to Pelton HH and due 3/23/15 with a bull calf.
 - Maternal brother is lot 85.
- Planned Mating EPDs: 13 -2.4 56 89 6.8 19 47 19.6 -0.12 0.29 128 67

KENNER SIMMENTAL RANCH

Red Purebred Simmental Bred Heifers



KS Ranita R341 - Dam of Lots 162-164

162 KS MISS BEEF KING A573

ASA# 2758068

Homozygous Polled Red Purebred Simmental Cow
Tattoo: A573 • Birthdate: 2/25/13 • DLF • ET-Twin
Adj. BW: 65 lbs • Adj. WW: 613
Owned by: Erika Kenner

SIRE: **WS BEEF KING W107**
 _____ WS BEEF MAKER R13
 _____ WS MISS DREAMBOAT T17
 _____ ANKONIAN RYAN
 DAM: **KS RANITA R341**
 _____ ANKONY MS CARMEN N2

EPDs		CW 36.9
CE	10	YG -0.30
BW	2.2	MAR 0.24
WW	81	BF -0.06
YW	109	REA 0.78
MCE	14	STAY 22.2
MM	21	DOC 7.2
MW	62	API 135
		TI 79

- AI bred to HXC Conquest 4405P on 5/21/14.
- PE to Pelton HH 265Z from 5/24/14 to 7/19/14.
- Ultrasound safe to Conquest and due 2/27/15 with a heifer calf.
- Twin to lot 163. Maternal sister to Lot 164.

Planned Mating EPDs: 15 -1.9 71 104 10.3 24 60 28.2 -0.11 0.43 149 80

164 KS MISS ALL IN A590

ASA# 2758075

Homozygous Polled Red Purebred Simmental Cow
Tattoo: A590 • Birthdate: 3/6/13 • DLF • ET
Adj. BW: 90 lbs • Adj. WW: 580
Owned by: Erika Kenner

SIRE: **WS ALL IN W111**
 _____ HSF HIGH ROLLER 12T
 _____ WS MISS TRACY T50
 _____ ANKONIAN RYAN
 DAM: **KS RANITA R341**
 _____ ANKONY MS CARMEN N2

EPDs		CW 36.1
CE	11	YG -0.21
BW	1.8	MAR -0.01
WW	79	BF -0.05
YW	108	REA 0.55
MCE	13	STAY 23.9
MM	36	DOC 8.6
MW	75	API 128
		TI 74

- AI bred to HXC Conquest 4405P on 5/20/14.
- PE to Pelton HH 265Z from 5/24/14 to 7/19/14.
- Ultrasound safe to Pelton HH and due 3/20/15 with a heifer calf.
- Maternal sister to Lots 162 & 163.

Planned Mating EPDs: 16 -2.6 65 98 8.2 24 56 24.1 -0.05 0.27 140 73

166 KS MISS RED RIDGE A606

ASA# 2758081

Polled Red Purebred Simmental Cow
Tattoo: A606 • Birthdate: 3/11/13 • DLF
Adj. BW: 97 lbs • Adj. WW: 667
Owned by: Erika Kenner

SIRE: **LFE RED RIDGE 809W**
 _____ LFE MR LEWIS 462P
 _____ LFE KIRBIE 217N
 _____ KS WCS FIGURE THIS M11
 DAM: **WCS MS FIGURE 698S**
 _____ WCS MS RED LIGHT 242M

EPDs		CW 41.0
CE	2	YG -0.24
BW	5.9	MAR -0.11
WW	76	BF -0.08
YW	106	REA 0.53
MCE	5	STAY 16.7
MM	20	DOC 12.9
MW	58	API 87
		TI 61

- AI bred to BCLR ShamWow W611 on 5/20/14.
- PE to Pelton HH 265Z from 5/24/14 to 7/19/14.
- Ultrasound safe to Pelton HH and due 4/9/15.
- Purchased dam from Western Cattle Source, Crawford, NE.

Planned Mating EPDs: 11 -0.5 63 97 4.1 16 48 26.6 -0.07 0.22 109 66

168 KS MISS SHEAR FORCE A631

ASA# 2758096

Homozygous Polled Red Purebred Simmental Cow
Tattoo: A631 • Birthdate: 3/25/13 • DLF • ET
Adj. BW: 73 lbs • Adj. WW: 546
Owned by: Roger Kenner

SIRE: **HOOKS SHEAR FORCE 38K**
 _____ NICHOLS LEGACY G151
 _____ C&D TRACY
 _____ ER BLACK CISCO 532C
 DAM: **RIV RED BRIGADIA 969J**
 _____ ER F131

EPDs		CW 9.1
CE	18	YG -0.40
BW	-2.5	MAR 0.10
WW	55	BF -0.03
YW	73	REA 1.01
MCE	14	STAY 26.4
MM	32	DOC 11.9
MW	60	API 147
		TI 69

- AI bred to HXC Conquest 4405P on 5/20/14.
- PE to Pelton HH 265Z from 5/24/14 to 7/19/14.
- Ultrasound safe to Conquest and due 2/26/15 with a heifer calf.

Planned Mating EPDs: 19 -4.3 58 85 9.9 30 59 14.3 -0.16 0.36 157 74

163 KS MISS BEEF KING A5731

ASA# 2758082

Homozygous Polled Red Purebred Simmental Cow
Tattoo: A5731 • Birthdate: 2/25/13 • DLF • ET-Twin
Adj. BW: 62 lbs • Adj. WW: 463
Owned by: Erika Kenner

SIRE: **WS BEEF KING W107**
 _____ WS BEEF MAKER R13
 _____ WS MISS DREAMBOAT T17
 _____ ANKONIAN RYAN
 DAM: **KS RANITA R341**
 _____ ANKONY MS CARMEN N2

EPDs		CW 36.9
CE	10	YG -0.30
BW	2.2	MAR 0.24
WW	81	BF -0.06
YW	109	REA 0.78
MCE	14	STAY 22.2
MM	21	DOC 7.2
MW	62	API 135
		TI 79

- AI bred to HXC Conquest 4405P on 5/22/14.
- PE to Pelton HH 265Z from 5/24/14 to 7/19/14.
- Ultrasound safe to Conquest and due 2/28/15 with a bull calf.
- Twin to lot 162. Maternal sister to Lot 164.

Planned Mating EPDs: 15 -1.9 71 104 10.3 24 60 28.2 -0.11 0.43 149 80

165 KS MISS RED RIDGE A593

ASA# 2758077

Polled Red Purebred Simmental Cow
Tattoo: A593 • Birthdate: 3/17/13 • DLF
Adj. BW: 95 lbs • Adj. WW: 632
Owned by: Erika Kenner

SIRE: **LFE RED RIDGE 809W**
 _____ LFE MR LEWIS 462P
 _____ LFE KIRBIE 217N
 _____ CNS DREAM ON L186
 DAM: **KS MISS DREAM ON S402**
 _____ BROOKS PERFECT STROKE

EPDs		CW 39.1
CE	6	YG -0.36
BW	5.1	MAR 0.02
WW	73	BF -0.08
YW	104	REA 0.82
MCE	9	STAY 22.7
MM	21	DOC 12.6
MW	57	API 113
		TI 66

- AI bred to BCLR ShamWow W611 on 5/23/14.
- PE to Pelton HH 265Z from 5/28/14 to 7/19/14.
- Ultrasound safe to Pelton HH and due 3/23/15 with a heifer calf.
- Maternal brother is lot 77. Same cow family as lot 156.

Planned Mating EPDs: 13 -0.9 62 96 6.3 17 47 25.6 -0.13 0.29 127 69

167 KS MISS RICH BLEND A630

ASA# 2758095

Heterozygous Polled Red Purebred Simmental Cow
Tattoo: A630 • Birthdate: 4/14/13 • DLF
Adj. BW: 72 lbs • Adj. WW: 539
Owned by: Roger Kenner

SIRE: **LFE RICH BLEND 385Y**
 _____ LFE BLACK LAKOTA 385W
 _____ LFE KISS & TELL 170R
 _____ THSF FREEDOM 300N
 DAM: **KS TESSA T91**
 _____ KS SANDY K653

EPDs		CW 11.6
CE	9	YG -0.34
BW	-0.7	MAR 0.22
WW	47	BF -0.05
YW	71	REA 0.70
MCE	16	STAY 21.0
MM	21	DOC 7.3
MW	45	API 126
		TI 62

- AI bred to HXC Conquest 4405P on 5/20/14.
- PE to Pelton HH 265Z from 5/24/14 to 7/19/14.
- Ultrasound safe to Conquest and due 2/26/15 with a bull calf.
- Same cow family as lot 88.

Planned Mating EPDs: 15 -3.4 54 85 11.4 24 51 15.5 -0.13 0.42 147 71

KENNER SIMMENTAL RANCH

Red Purebred Simmental Bred Heifers

Thank you to K2S Engineering for the landscape design of the new facility, Scott Ressler at North Dakota Stockman's Association for coordinating everything and Tim Olson, St. Onge, SD for the pen & processing barn design. Our life is so much easier now!

170 KS MISS SHAMWOW A662

ASA# 2758113

Polled Red Purebred Simmental Cow
Tattoo: A662 • Birthdate: 3/15/13 • Dilution Test Pending
Adj. BW: 91 lbs • Adj. WW: 580
Owned by: Erika Kenner

SIRE: **BCLR SHAMWOW W611**
— WS BEEF MAKER R13
— BCLR MISS SHANIA S611

DAM: **KS MISS FREEDOM T442**
— THSF FREEDOM 300N
— TRAX MISS P469

EPDs		CW 39.3	
CE	9	YG	-0.25
BW	2.1	MAR	0.22
WW	72	BF	-0.07
YW	111	REA	0.61
MCE	9	STAY	
MM	21	DOC	13.1
MW	57	API	120
		TI	71

- AI bred to HXC Conquest 4405P on 5/21/14.
 - PE to Pelton HH 265Z from 5/24/14 to 7/19/14.
 - Ultrasound safe to Conquest and due 2/27/15 with a heifer calf.
 - Dam carries the dilution gene. Currently being tested. Will know by sale day.
- Planned Mating EPDs: 15 -2.0 67 105 7.8 24 57 29.4 -0.08 0.42 138 76

172 KS MISS RICH BLEND A730

ASA# 2758143

Polled Red Purebred Simmental Cow
Tattoo: A730 • Birthdate: 3/24/13
Adj. BW: 96 lbs • Adj. WW: 525
Owned by: Erika Kenner

SIRE: **LFE RICH BLEND 385Y**
— LFE BLACK LAKOTA 385W
— LFE KISS & TELL 170R

DAM: **KS ULANA U456**
— WHEATLAND RED TEDDY 457P
— KS LUCY P970

EPDs		CW 20.1	
CE	7	YG	-0.25
BW	3.0	MAR	0.10
WW	50	BF	-0.05
YW	76	REA	0.52
MCE	14	STAY	12.7
MM	16	DOC	6.5
MW	40	API	94
		TI	55

- AI bred to WS All In W111 on 5/20/14.
 - PE to Pelton HH 265Z from 5/24/14 to 7/19/14.
 - Ultrasound safe to Pelton HH and due 3/16/15 with a bull calf.
- Planned Mating EPDs: 14 -2.0 50 82 8.5 14 39 16.1 -0.07 0.33 127 63



Lot 174

169 KS MISS SEQUOIA A643

ASA# 2758104

Homozygous Polled Red Purebred Simmental Cow
Tattoo: A643 • Birthdate: 3/6/13 • DLF • ET
Adj. BW: 90 lbs • Adj. WW: 567
Owned by: Roger Kenner

SIRE: **HOOKS/KS SEQUOIA 35S**
— HOOKS SHEAR FORCE 38K
— HOOKS NICOLE 15N

DAM: **TNT MISS S47**
— HART EXTRA EFFORT G289
— TNT MISS APRIL N134

EPDs		CW 24.7	
CE	8	YG	-0.28
BW	2.8	MAR	0.08
WW	61	BF	-0.05
YW	85	REA	0.65
MCE	12	STAY	23.0
MM	24	DOC	10.7
MW	55	API	119
		TI	63

- AI bred to WS All In W111 on 5/20/14.
 - PE to Pelton HH 265Z from 5/24/14 to 7/19/14.
 - Ultrasound safe to All In and due 2/26/15 with a heifer calf.
 - Maternal siblings are lots 59-62, 82-84, 92 & 119.
- Planned Mating EPDs: 13 1.5 73 101 13.4 32 69 31.9 -0.29 0.11 135 74

171 KS MISS RED RIDGE A680

ASA# 2758118

Polled Red Purebred Simmental Cow
Tattoo: A680 • Birthdate: 4/1/13 • DLF
Adj. BW: 75 lbs • Adj. WW: 642
Owned by: Roger Kenner

SIRE: **LFE RED RIDGE 809W**
— LFE MR LEWIS 462P
— LFE KIRBIE 217N

DAM: **KS TEGAN T885**
— KS BRAVADO P68
— TRAX MISS P499

EPDs		CW 22.2	
CE	11	YG	-0.32
BW	-0.2	MAR	0.15
WW	62	BF	-0.07
YW	89	REA	0.58
MCE	13	STAY	19.2
MM	28	DOC	12.6
MW	59	API	125
		TI	70

- AI bred to BCLR ShamWow W611 on 5/20/14.
 - PE to Pelton HH 265Z from 5/24/14 to 7/19/14.
 - Ultrasound safe to ShamWow and due 2/26/15 with a bull calf.
 - Maternal brother is lot 116. Same cow family as lots 8 & 87.
- Planned Mating EPDs: 13 -0.1 75 113 8.8 26 64 36.5 -0.24 0.37 142 80

173 KS MISS SHAMWOW A732

ASA# 2758145

Homozygous Polled Red Purebred Simmental Cow
Tattoo: A732 • Birthdate: 3/11/13 • DLF • Twin
Adj. BW: 81 lbs • Adj. WW: 652
Owned by: Roger Kenner

SIRE: **BCLR SHAMWOW W611**
— WS BEEF MAKER R13
— BCLR MISS SHANIA S611

DAM: **MRL MISS 478U**
— MRL HURRICANE 27R
— IPU RED SATIN 177M

EPDs		CW 37.1	
CE	10	YG	-0.40
BW	1.6	MAR	0.20
WW	72	BF	-0.14
YW	109	REA	0.50
MCE	5	STAY	
MM	23	DOC	12.5
MW	59	API	118
		TI	73

- AI bred to HXC Conquest 4405P on 5/20/14.
 - PE to Pelton HH 265Z from 5/24/14 to 7/19/14.
 - Ultrasound safe to Pelton HH and due 3/22/15 with a bull calf.
 - Purchased dam from McMillen Ranch, Carievale, SK.
- Planned Mating EPDs: 16 -2.7 61 98 4.3 18 48 24.6 -0.15 0.38 134 73

174 KS MISS RED RIDGE A736

ASA# 2758148

Homozygous Polled Red Purebred Simmental Cow
Tattoo: A736 • Birthdate: 3/2/13 • DLF
Adj. BW: 82 lbs • Adj. WW: 584
Owned by: Roger Kenner

SIRE: **LFE RED RIDGE 809W**
— LFE MR LEWIS 462P
— LFE KIRBIE 217N

DAM: **KS UBERTA U490**
— KS RED STONE R236
— KS MISS FREEDOM R245

EPDs		CW 27.6	
CE	7	YG	-0.33
BW	2.0	MAR	-0.01
WW	64	BF	-0.08
YW	92	REA	0.62
MCE	10	STAY	20.3
MM	21	DOC	12.1
MW	53	API	111
		TI	63

- AI bred to BCLR ShamWow W611 on 5/20/14.
 - PE to Pelton HH 265Z from 5/24/14 to 7/19/14.
 - Ultrasound safe to ShamWow and due 2/26/15 with a bull calf.
 - Full brother is lot 89. Same cow family as lot 115.
- Planned Mating EPDs: 11 1.1 76 115 7.0 23 61 39.2 -0.24 0.29 128 77

KENNER SIMMENTAL RANCH

Red Purebred Simmental Bred Heifers

175 KS MISS RICH BLEND A851

ASA# 2758212

Polled Red Purebred Simmental Cow
Tattoo: A851 • Birthdate: 3/15/13 • DLF
Adj. BW: 71 lbs • Adj. WW: 522
Owned by: Erika Kenner

SIRE: LFE BLACK LAKOTA 385W

— LFE RICH BLEND 385Y

— LFE KISS & TELL 170R

DAM: KS WILLISTON W685

— HOOKS SHEAR FORCE 38K
— RED SANDY CATALYST T705Z

EPDs		CW 2.6	
CE	14	YG	-0.12
BW	-1.4	MAR	0.39
WW	39	BF	0.03
YW	58	REA	0.53
MCE	12	STAY	16.9
MM	28	DOC	8.7
MW	48	API	130
		TI	63

- AI bred to WS All In W111 on 5/20/14.
 - PE to Pelton HH 265Z from 5/24/14 to 7/19/14.
 - Ultrasound safe to Pelton HH and due 3/23/15 with a bull calf.
- Planned Mating EPDs: 17 -4.2 45 73 7.6 20 43 7.4 -0.01 0.47 145 66

176 KS MISS RED RIDGE A856

ASA# 2758215

Polled Red Purebred Simmental Cow
Tattoo: A856 • Birthdate: 4/24/13
Adj. BW: 99 lbs • Adj. WW: 610
Owned by: Erika Kenner

SIRE: LFE MR LEWIS 462P

— LFE RED RIDGE 809W

— LFE KIRBIE 217N

DAM: MLC MS BEEFMAKER W597

— WS BEEF MAKER R13
— MLC MISS RED CAT M45

EPDs		CW 36.8	
CE	5	YG	-0.33
BW	4.4	MAR	0.29
WW	70	BF	-0.08
YW	102	REA	0.76
MCE	9	STAY	19.9
MM	28	DOC	12.8
MW	63	API	122
		TI	72

- AI bred to HXC Conquest 4405P on 5/28/14.
 - PE to Pelton HH 265Z from 5/30/14 to 7/19/14.
 - Ultrasound safe to Pelton HH and due 2/25/15 with a heifer calf.
 - Purchased dam from Mandan Lake Ranch at Dakota Xpress sale.
- Planned Mating EPDs: 13 -1.3 60 95 6.1 20 50 24.5 -0.11 0.42 133 72

177 KS MISS ALL IN A885

ASA# 2758241

Polled Red Purebred Simmental Cow
Tattoo: A885 • Birthdate: 3/9/13
Adj. BW: 56 lbs • Adj. WW: 521
Owned by: Erika Kenner

SIRE: WS ALL IN W111

— HSF HIGH ROLLER 12T
— WS MISS TRACY T50

DAM: KS RENAE X389

— NLC PAYDIRT 39P
— NLC N85

EPDs		CW 15.4	
CE	19	YG	-0.22
BW	-2.6	MAR	0.70
WW	62	BF	-0.02
YW	84	REA	0.62
MCE	12	STAY	17.0
MM	30	DOC	9.8
MW	61	API	164
		TI	87

- AI bred to BCLR ShamWow W611 on 5/21/14.
 - PE to Pelton HH 265Z from 5/24/14 to 7/19/14.
 - Ultrasound safe to ShamWow and due 2/27/15 with a bull calf.
- Planned Mating EPDs: 16 -1.3 75 110 8.3 27 65 33.1 -0.19 0.64 168 88



Lot 177

178 KS MISS SHAMWOW A886

ASA# 2758242

Polled Red Purebred Simmental Cow
Tattoo: A886 • Birthdate: 3/19/13 • DLF
Adj. BW: 61 lbs • Adj. WW: 588
Owned by: Roger Kenner

SIRE: BCLR SHAMWOW W611

— WS BEEF MAKER R13
— BCLR MISS SHANIA S611

DAM: KS PATSY X390

— ACS RED KNIGHT 715T
— KS TANISHA P9

EPDs		CW 30.0	
CE	16	YG	-0.28
BW	-2.2	MAR	0.19
WW	68	BF	-0.07
YW	106	REA	0.55
MCE	10	STAY	
MM	30	DOC	12.1
MW	64	API	143
		TI	75

- AI bred to HXC Conquest 4405P on 5/28/14.
 - PE to Pelton HH 265Z from 5/30/14 to 7/19/14.
 - Ultrasound safe to Conquest and due 3/6/15 with a bull calf.
 - Same cow family as lot 95.
- Planned Mating EPDs: 18 -4.1 64 102 8.0 28 61 24.7 -0.10 0.41 150 78



Lot 178

179 KS MISS ALL IN A933

ASA# 2758275

Homozygous Polled Red Purebred Simmental Cow
Tattoo: A933 • Birthdate: 3/2/13 • DLF
Adj. BW: 102 lbs • Adj. WW: 689
Owned by: Roger Kenner

SIRE: WS ALL IN W111

— HSF HIGH ROLLER 12T
— WS MISS TRACY T50

DAM: KS MISS YVETTE Y22

— KS SATURN U390
— RIV RED BRIGADIA 969J

EPDs		CW 45.6	
CE	11	YG	-0.26
BW	3.6	MAR	-0.01
WW	84	BF	-0.08
YW	119	REA	0.64
MCE	15	STAY	23.2
MM	34	DOC	11.7
MW	76	API	125
		TI	75

- AI bred to HXC Conquest 4405P on 5/20/14.
 - PE to Pelton HH 265Z from 5/24/14 to 7/19/14.
 - Ultrasound safe to Conquest and due 2/26/15 with a bull calf.
- Planned Mating EPDs: 16 -1.2 72 109 10.6 31 67 32.5 -0.09 0.31 144 77

180 KS MISS ALL IN A964

ASA# 2758306

Polled Red Purebred Simmental Cow
Tattoo: A964 • Birthdate: 2/24/13 • DLF
Adj. BW: 95 lbs • Adj. WW: 657
Owned by: Roger Kenner

SIRE: WS ALL IN W111

— HSF HIGH ROLLER 12T
— WS MISS TRACY T50

DAM: KS MISS YEVA Y628

— WS BEEF KING W107
— HAAS RANCH T71

EPDs		CW 45.5	
CE	11	YG	-0.24
BW	3.2	MAR	0.24
WW	89	BF	-0.07
YW	121	REA	0.64
MCE	14	STAY	22.4
MM	28	DOC	10.0
MW	72	API	139
		TI	83

- AI bred to BCLR ShamWow W611 on 5/20/14.
 - PE to Pelton HH 265Z from 5/24/14 to 7/19/14.
 - Ultrasound safe to Pelton HH and due 3/28/15.
 - Granddam is dam of lot 112.
- Planned Mating EPDs: 16 -1.9 69 104 8.6 20 55 28.8 -0.07 0.40 148 78

KENNER SIMMENTAL RANCH

Red 3/4 & 1/2 SimAngus Bred Heifers



Lot 181

181 KS MISS BEEF KING A561

ASA# 2758066

Polled Red 3/4 Red SimAngus Cow
Tattoo: A561 • Birthdate: 3/1/13
Adj. BW: 84 lbs • Adj. WW: 517
Owned by: Erika Kenner

SIRE: **WS BEEF KING W107**
 — WS BEEF MAKER R13
 — WS MISS DREAMBOAT T17
 DAM: **KS MINDY S97**
 — KS CHARLIES ANGEL K751

EPDs	
CE 7	CW 32.3
BW 2.4	YG -0.05
WW 74	MAR 0.52
YW 100	BF 0.02
MCE 13	REA 0.58
MM 4	STAY
MW 41	DOC 7.3
	API 134
	TI 76

- AI bred to WS All In W111 on 5/21/14.
 - PE to Pelton HH 265Z from 5/24/14 to 7/19/14.
 - Ultrasound safe to All In and due 2/27/15 with a bull calf.
- Planned Mating EPDs: 12 1.3 79 109 13.8 22 62 35.7 -0.18 0.33 144 79



Lot 182

182 KS MISS RED RIDGE A388

ASA# 2758010

Polled Red 3/4 Red SimAngus Cow
Tattoo: A388 • Birthdate: 2/25/13 • DLF
Adj. BW: 71 lbs • Adj. WW: 623
Owned by: Roger Kenner

SIRE: **LFE RED RIDGE 809W**
 — LFE MR LEWIS 462P
 — LFE KIRBIE 217N
 DAM: **NLC N58**
 — SRS FORTUNE 500
 — G32

EPDs	
CE 8	CW 30.9
BW 0.7	YG -0.04
WW 67	MAR 0.11
YW 101	BF -0.03
MCE 7	REA 0.16
MM 23	STAY 13.5
MW 57	DOC 13.7
	API 108
	TI 69

- AI bred to WS All In W111 on 5/21/14.
 - PE to Pelton HH 265Z from 5/24/14 to 7/19/14.
 - Ultrasound safe to Pelton HH and due 4/7/15.
 - Maternal sib brothers are lots 102 & 103.
- Planned Mating EPDs: 15 -3.1 59 94 5.3 18 47 21.5 0.04 0.33 129 69

183 KS MISS HUSTLER A204

ASA# 2757987

Homozygous Polled Red 1/2 Red SimAngus Cow
Tattoo: A204 • Birthdate: 3/2/13 • DLF
Adj. BW: 78 lbs • Adj. WW: 618
Owned by: Roger Kenner

SIRE: **BECKTON HUSTLER S426 C2**
 — BECKTON HUSTLER C2 L079
 — BKT LARKEISA M288 CK
 DAM: **KS KATE L867**
 — 3C FULL FIGURES C288 BLK
 — RIV LADY PREFERENCE 716G

EPDs	
CE 16	CW 33.6
BW -0.1	YG -0.10
WW 73	MAR 0.23
YW 108	BF -0.03
MCE 9	REA 0.39
MM 16	STAY
MW 52	DOC 16.9
	API 137
	TI 73

- AI bred to WS All In W111 on 5/22/14.
 - PE to WS All In W111 from 5/28/14 to 7/19/14.
 - Ultrasound safe to All In and due 3/20/15 with a bull calf.
 - Strong cow family. Dam had 11 progeny - 4 bulls made the sale & 4 daughters are in the herd.
- Planned Mating EPDs: 17 0.1 79 113 11.9 28 67 36.4 -0.20 0.18 147 78



Lot 183

184 BGL MISS EPIC A135B

ASA# 2758332

Polled Red 1/2 Red SimAngus Cow
Tattoo: A135B • Birthdate: 2/23/13 • DLF
Adj. BW: 84 lbs • Adj. WW: 647
Owned by: Leapaltd Simmentals

SIRE: **BECKTON EPIC R397 K**
 — BECKTON EPIC F075
 — BECKTON KIT F468 JL
 DAM: **BGL DREAMA S112B**
 — CNS DREAM ON L186
 — BGL MISS PERFECTOR P55

EPDs	
CE 10	CW 40.6
BW 0.8	YG -0.05
WW 74	MAR 0.28
YW 117	BF 0.00
MCE 5	REA 0.54
MM 19	STAY
MW 57	DOC 12.1
	API 116
	TI 74

- AI bred to WS All In W111 on 5/24/14.
 - PE to WS All In W111 from 5/28/14 to 7/19/14.
 - Ultrasound safe to All In and due 4/18/15.
- Planned Mating EPDs: 14 0.5 80 117 10.1 30 70 39.9 -0.18 0.21 137 78



Lot 184

KENNER SIMMENTAL RANCH

Bull Buyer's Quick Guide to ASA EPDs and \$ Indexes

Expected Progeny Differences (EPDs): EPDs are the most accurate and effective tool available for comparing genetic levels. In using EPDs, the difference between two sires' EPDs represents the unit difference expected in the performance of their progeny. For example, if sires A and B have EPDs of +10 and -5, a 15-unit difference would be expected in their progeny (moving from -5 to +10 yields 15 units). Key to using EPDs is knowing in what units they are expressed. For example, if the above case referred to weaning weight EPDs, sire A would be expected to sire 15 pounds more weaning weight than sire B. If calving ease was the trait, sire A would be expected to sire 15 percent more unassisted births in first-calf heifers; in other words, if sire B sired 30 assists in a group of 100 heifers, we would expect sire A to require 15 assists. A percentile-ranking chart is required to determine where a bull's EPDs rank him relative to other bulls in the breed. For more detailed information about EPDs and \$ indexes, visit www.simmental.org. Listed below are the units in which ASA EPDs are expressed:

All-Purpose Index (API): Dollars per cow exposed under an all-purpose-sire scenario. (See \$ Indexes for more details.)

Back Fat (BF): Inches of carcass backfat at 475 days.

Birth Weight (BW): Pounds of birth weight.

Calving Ease (CE): Percent of unassisted births when used on heifers.

Carcass Weight (CW): Pounds of carcass weight at 475 days.

Docility (DOC): Percent of offspring receiving a disposition score of 1 (docile).

\$ Indexes: Though EPDs allow for the comparison of genetic levels for many economically important traits, they only provide pieces of the economic puzzle. This is where \$ indexes come in. Through well-conceived, rigorous mathematical computation, \$ indexes blend EPDs and economics to estimate an animal's overall impact on integrated commercial production. The same technology that led to the dramatic progress in swine, poultry and dairy genetics over the last several decades was used to develop the following \$ indexes:

All-Purpose Index (API): Evaluates sires for use on the entire cow herd (bred to both Angus first-calf heifers and mature cows) with the portion of their daughters required to maintain herd size retained and the remaining heifers and steers put on feed and sold grade and yield.

Terminal Index (TI): Evaluates sires for use on mature Angus cows with all offspring put on feed and sold grade and yield.

Using API and TI: First, determine which index to use; if you are keeping replacements use API, if not, use TI. Then, just as with EPDs, zero in on the unit difference between bulls. (As described above, index units are in dollars per cow exposed.) The difference can be used to determine how much a bull is worth compared to another. Put another way, how much you can pay for one bull compared to another. For example, when buying an all-purpose-type sire, you can quickly figure a bull scoring +100 for API is worth an extra \$6,000 over a +50 bull if both are exposed to 30 cows over 4 years (\$50 diff. x 30 hd. x 4 yr.= \$6,000). A percentile-ranking chart is required to determine where a bull's index value ranks him relative to other bulls in the breed. For more detailed information about EPDs and \$ indexes, visit: www.simmental.org

Important disclaimer: DO NOT compare index values of purebreds of different breeds, hybrids of different breed composition or purebreds with hybrids — our system was not developed to make valid comparison among these groups. Therefore, you must first determine the breed and breed composition appropriate for your herd and use index values to compare animals within that population.

EPD AVERAGES - BULLS

	CE	BW	WW	YW	MCE	MM	MWW	CW	YG	MB	BF	REA	STAY	DOC	API	TI	ADG EPD
KENNER PUREBRED BULLS AVERAGE:	8.2	2.8	74.3	111.4	9.5	23.1	60.19	40.1	-0.25	0.09	-0.05	0.74	19.2	10.6	115.6	70.1	0.232
BREED AVERAGE:	8.7	1.9	63.2	92.0	9.4	22.1	53.6	26.9	-0.31	0.14	-0.06	0.79	20.8	9.6	120.6	67.4	0.180
KENNER HYBRID BULLS AVERAGE:	10.3	1.3	72.0	113.3	8.7	23.5	59.5	39.3	-0.13	0.29	-0.03	0.57		12.3	122	73.1	0.258
BREED AVERAGE:	10.4	0.6	60.7	92.9	8.0	22.8	53.0	25.8	-0.20	0.35	-0.03	0.60		10.3	121.7	68.7	0.201

KENNER SIMMENTAL RANCH

440 6th Ave. SE
Leeds, ND 58346

